

# **SGG Silk screen printing toughened door glass 8mm 10mm 12mm- CE/BS 6206/ISO9001/CCC Quality Standard**

**Silk Screen Glass Door** is a special kind of door and a special form of door leaf. Glass door are made by [8mm silk screen glass/10mm silk screen glass/12mm silk screen glass](#), generally use the thickness of 8mm/10mm/12mm glass material for production, the use of tempered silk screen glass is both strong and safe. The characteristics of glass doors are determined by the characteristics of the glass used. For example, if use clear tempered glass, the glass door has a transparent function. If use frosted glass, the glass door is with a semi-translucent function.

## **Styles of glass doors:**

### **1. Decorative glass doors**

□. Glass types for decorative glass doors: frosted glass door, patterned glass door, acid etched glass door, silk screen glass door, tinted glass door etc.

□. Features for decorative glass doors:

①. This kind of glass doors are with different patterns, different colors, good glossy sense, and excellent decorative effect.

②. At the same time, the glass doors are with corrosion-resistant, easy to clean, anti-erosion and other characteristics.

### **2. Safety glass doors**

□ Glass types for safety glass doors: tempered glass, bulletproof glass, wire glass, fire resistance glass and laminated glass.

□ Features for safety glass doors:

① The safety glass doors are with good sun light, easy cleaning, high mechanical strength, good thermal stability, not flying after broken, not easy to hurt human beings.

② The safety glass doors have function of anti-theft, fire prevention in some degree.

### **3. Energy-saving glass doors**

□Glass types for energy saving glass doors: reflective glass, low e glass, insulated glass etc.

□Features for energy-saving glass doors:

①.The energy saving raw glass is with a special process and tinting, so this type of glass doors can effectively absorb solar radiation heat, and achieve energy-saving effect.

②. The energy saving glass doors absorb ultraviolet and visible light, to prevent the impact of ultraviolet light on the indoor and the purpose of soft light.

### **Specifications:**

Glass doors can be made with single glass or double glass units.

Glass Thickness(single type glass doors): 8mm 10mm 12mm etc

Glass Thickness(double type glass doors): 5mm+5mm, 6mm+6mm, 8mm+8mm etc

Glass types used for glass doors: tempered glass, laminated glass, silk screen safety glass, insulated glass, acid etched glass etc.

Glass Door Size: customized size based on clients' requirements.

Process details: polished edges, cut-outs, drilling holes

### **Quality Control:**

As glass doors are widely used in modern building, It is very important to control the quality of glass doors . The glass doors made by Sun Global Glass comply with following quality standards:

1. Silk screen printing toughened door glass 8mm 10mm 12mm meet BS 6206 UK safety glass standard.
2. Silk screen printing toughened door glass 8mm 10mm 12mm meet EN 12150 CE European safety glass standard.
3. Silk screen printing toughened door glass 8mm 10mm 12mm meet Chinese Safety Glass Compulsory Certification (CCC) and ISO 9001.

**Product Details:**

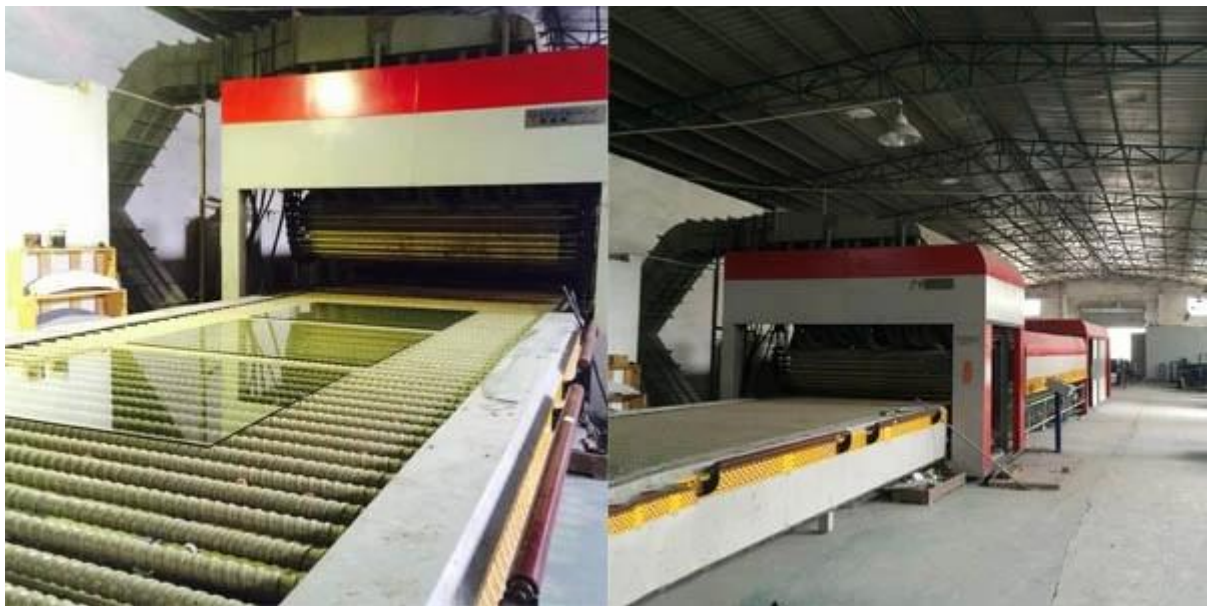
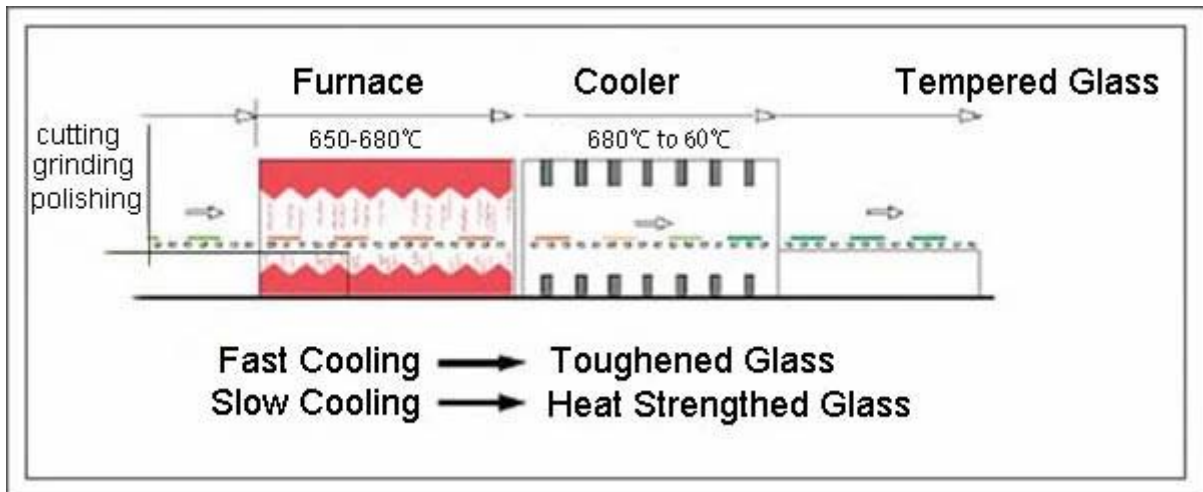
**Product pictures of Silk screen printing toughened door glass 8mm 10mm 12mm:**



**Process Details for Silk screen printing toughened door glass 8mm 10mm 12mm:**



**Production Line for Silk screen printing toughened door glass 8mm 10mm 12mm:**



**Package and Loading:**



**Our promise is that you receiving Silk screen printing toughened door glass 8mm 10mm 12mm with high quality and safety condition from us.**