

7mm kirkas paksu värejä u-profiili lasitehdas, U-kanava Lasi-lasilevyt, edullinen U-muotoinen lasi rakentaa seinää.

7mm kirkas paksu värejä u-profiili lasi kutsutaan myös kanavan lasi, tuote jalostuksen on käyttää ensimmäistä liikkuvan ja post muodostavat jatkuva tuotanto, kiitos sen poikkileikkaus on "U" tyyppi, niin nimetty. Laaja valikoima u-muotoisia lasia, jotka ovat ihanteellisia valon laadun, lämmönsuojelun ja korkean mekaanisen lujuuden kannalta, ei vain laajalti käytetty ja helppo asentaa ja on koristeellinen vaikutus. Tämä tuote on ensiluokkainen rakennusmateriaali sisäseiniin, ulkoseiniin , väliseinät, katot ja ikkunat jne.

U-profiililasin ominaisuudet

1. Kevyt, vähentää omaa painoaan, valon muodot voivat lisätä rakennuksen käyttökelpoista pinta-alaa.
2. Äänieristys, lämmöneristys, ympäristön parantaminen energian säästämiseksi. Kaksoisuran äänieristykseen lasissa kuvatut tiedot ovat 38 db, lämmönsiirtokerroin on 1,74 W / m². K, ja yksittäisen 6 mm: n lasin lämmönsiirtokerroin on 3,65 W / m². Kerroksen tyyppin lasin ansiosta rakennuksen energiankulutuksen vähentäminen on eräänlainen ihanteellinen seinämateriaali.
3. Turvallisuus, korroosionkestävyys, läpikuultava seinämateriaalien ihanteellinen muoto.
4. Helppo rakentaa, taloudellinen ja käytännöllinen.

Sovellus:

Kirkkaita paksuja värejä u-profiililasi voidaan käyttää sisä- ja ulkoseinissä, väliseinissä ja teollisuus- ja siviilirakennusten katoissa lentokentillä, rautatieasemilla, stadioneilla, tehtaissa, toimistorakennuksissa, hotelleissa, taloissa ja kasvihuoneissa.

erittely:

Lasi nimi: 7mm kirkas paksu värejä u-profiili lasi

Paksuus: 7mm

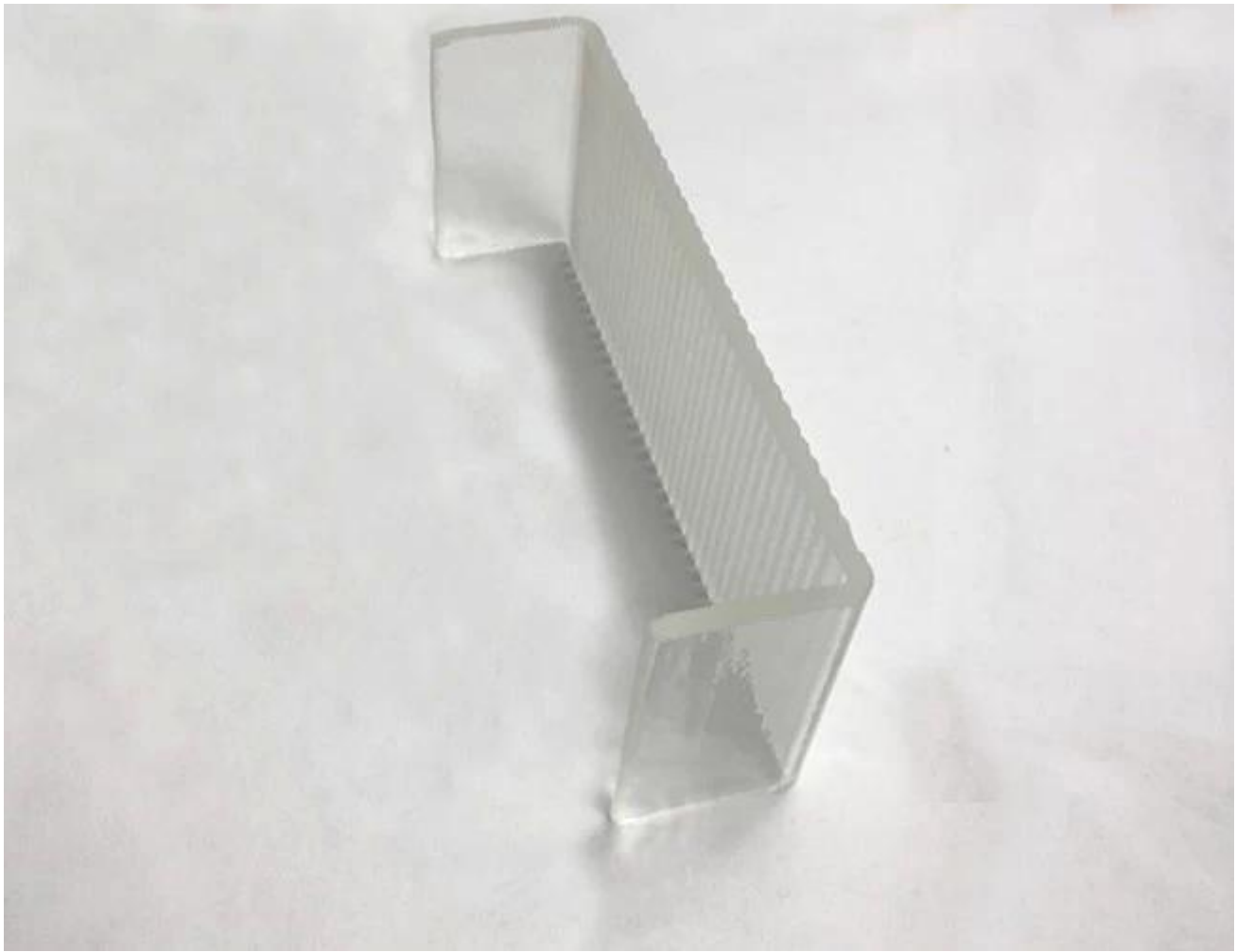
Koko: Asiakkaan kysyntä

Tekniikka: Kirkas lasi, kuvioitu lasi, himmeä lasi, karkaistu lasi, sävytetty

Max pituus: 6000mm

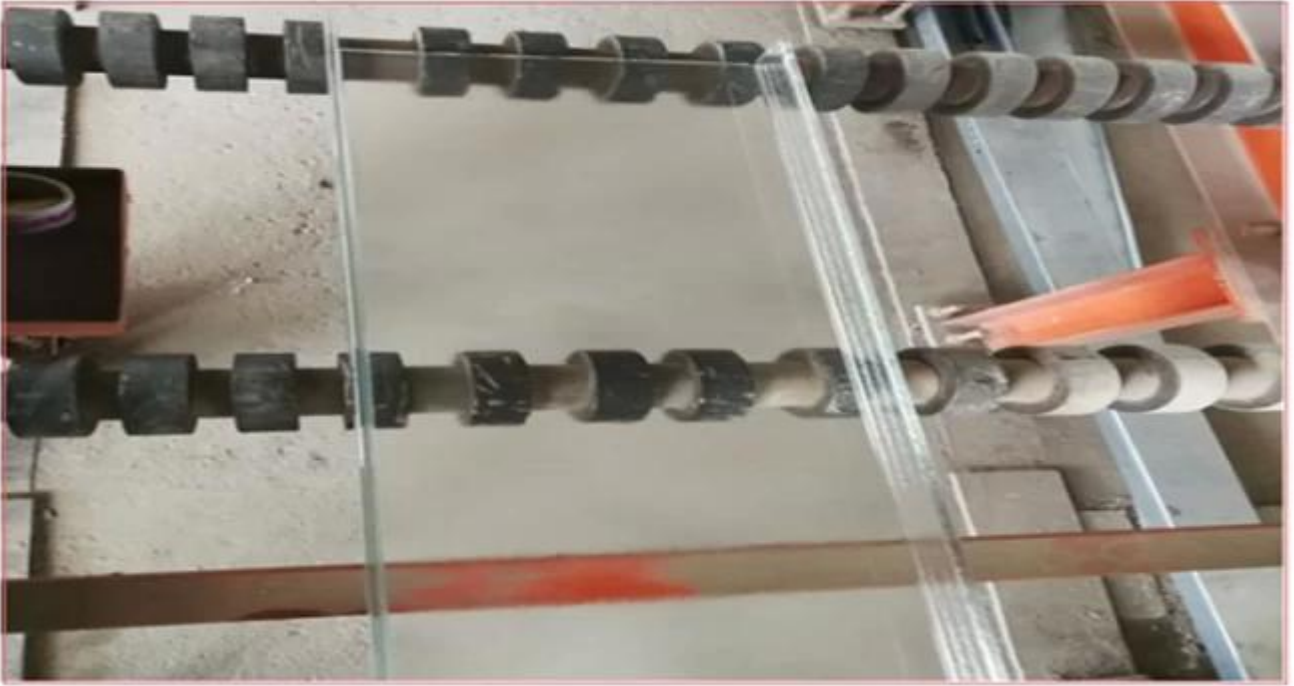
Tehtävä: hapan syövytetty lasi, koristeellinen lasi, lämpöä absorboiva lasi.





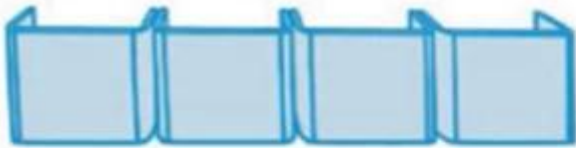
Tuoteperhe:



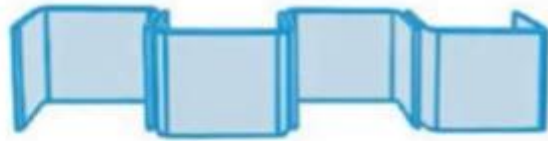


U-profililasin asettelu:

Single glazing Flange outside(inside)



Sheep-pile Strung inside



Sheep-pile Interlocking



Double glazing Stagger arrangement



Double glazing Standard arrangement



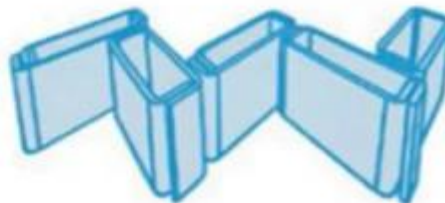
Double glazing Flange to flange



Double glazing Slightly curved



Double glazing Arranged in zig-zag formation in pairs



Sovellus näyttää:

U-profililasi on ensiluokkainen rakennusmateriaali sisäseiniin, ulkoseiniin, väliseiniin, ikkunoihin jne.



U-profiililasi täyttää Euroopan, Pohjois-Amerikan ja Kiinan standardit, ISO, CCC, CE, BS6206, EN12510 jne.

Verification of Conformity
 Evaluation of conformity / Product standard
EN 14449:2005
 The mark is referred to the original test report: 401100114002

The product in the certificate: Laminated Safety Glass, manufactured by SHENZHEN SUN GLOBAL GLASS CO., LTD. was submitted to the manufacturer for Performance Testing according to the administrative Computer system. The results showed compliance with the applicable requirements. The test results and the content of this certificate of Conformity, including issues in the tested samples. The results remain valid as long as the certificate has been in the above mentioned standard and no further applications.

Company: Name: SHENZHEN SUN GLOBAL GLASS CO., LTD.
 Address: 3F, Qiangyuan Building, Shuangyuan Road, Luoyang, Henan, Zhengzhou, Henan, China

Manufacturer: Name: SHENZHEN SUN GLOBAL GLASS CO., LTD.
 Address: 3F, Qiangyuan Building, Shuangyuan Road, Luoyang, Henan, Zhengzhou, Henan, China

Product: Laminated Safety Glass
 Model: Smart Glass, Privacy Glass, Smart Glass, Privacy Glass, Smart Glass, Privacy Glass, Smart Glass, Privacy Glass

Test Standards: EN 14449:2005

Shanghai, 27 October 2017




Shenzhen Sun Global Glass Co., Ltd.
 a glass's manufacturer to supply

SHENZHEN SUN GLOBAL GLASS CO., Ltd
 has successfully passed the qualification process of Iso9001 in Nov. 2014

The certificate is valid until the date shown in the below table as long as your manufacturing process for laminated safety glass remains unchanged. Renewal is subject to validation (each supplied laminates)

Date: 2017-10-27

| | | | | | | | |
|------|------|------|------|------|------|------|------|
| SAF0 | SAF0 | SAF0 | SAF0 | SAF0 | SAF0 | SAF0 | SAF0 |
| 2017 | 2018 | 2019 | 2020 | 2021 | 2022 | 2023 | 2024 |

Shanghai, 27 October 2017



DECLARATION OF CONFORMITY

EC Declaration of CPD Conformity

The following product has been tested by Labtest Technology Laboratory Ltd. with the following standards and found in conformity with the EC Council Directive of 89/105/EEC. It is possible to use CE marking to demonstrate the conformity with the CPD Directive.

Report No.: LPT01012012
Applicant: SHENZHEN SUN GLOBAL GLASS CO., LTD.
Address: NO.34 FLOOR SA RUIJONG BUILDING, BUJIAOYUAN, LONGHANG DISTRICT, SHENZHEN GUANGDONG, CHINA
Manufacturer: SHENZHEN SUN GLOBAL GLASS CO., LTD.
Address: NO.34 FLOOR SA RUIJONG BUILDING, BUJIAOYUAN, LONGHANG DISTRICT, SHENZHEN GUANGDONG, CHINA
Product: Insulated Glass
Model No.: Smart-Glass, Smart-Glass, Smart-Glass, Smart-Glass, Smart-Glass, Smart-Glass, Smart-Glass, Smart-Glass
Trade Mark: N/A
Test Standards: EN ISO 12743

The relevant test report(s) show that the product complies with the essential requirements in the above listed standards. The applicant is authorized to use this certificate in connection with the EC Declaration of CPD conformity according to the Directive.

CE

Shanghai, 27 October 2017



DECLARATION OF CONFORMITY

Professional glass manufacturer

The following product has been tested by Labtest Technology Laboratory Ltd. with the following standards and found in conformity with the EC Council Directive of 89/105/EEC. It is possible to use CE marking to demonstrate the conformity with the CPD Directive.

Report No.: LPT01012012
Applicant: SHENZHEN SUN GLOBAL GLASS CO., LTD.
Address: NO.34 FLOOR SA RUIJONG BUILDING, BUJIAOYUAN, LONGHANG DISTRICT, SHENZHEN GUANGDONG, CHINA
Manufacturer: SHENZHEN SUN GLOBAL GLASS CO., LTD.
Address: NO.34 FLOOR SA RUIJONG BUILDING, BUJIAOYUAN, LONGHANG DISTRICT, SHENZHEN GUANGDONG, CHINA
Product: TEMPERED GLASS
Model No.: Smart, Smart, Smart, Smart, Smart, Smart, Smart, Smart
Trade Mark: N/A
Test Standards: EN 12150-2:2004

The relevant test report(s) show that the product complies with the essential requirements in the above listed standards. The applicant is authorized to use this certificate in connection with the EC Declaration of CPD conformity according to the Directive.

CE

Shanghai, 27 October 2017



QUALITY MANAGEMENT SYSTEM

CERTIFICATE

Certificate No.: 18710431038800
 No. 18710431038800
Shenzhen Sun Global Glass Co., Ltd
 Certified under order code: 18710431038800/18710431038800
 Address: Room 3F, Floor 3, Qiangyuan Building, Shuangyuan Road, Luoyang, Henan, Zhengzhou, Henan, China
 In issue of an ISO 9001:2015 Management System
 has been awarded this certificate for compliance with the standard
ISO 9001:2015

The Quality Management System applies in the following area:
 Sales of Insulating Glass (IGU) Glass, Tempered Glass, Laminated Glass, Insulated Glass, Mirror Glass and Other Glass Products

Issued by: 尹宇晨

Shanghai, 27 October 2017




DECLARATION OF CONFORMITY

Professional glass manufacturer

The following product has been tested by Labtest Technology Laboratory Ltd. with the following standards and found in conformity with the EC Council Directive of 89/105/EEC. It is possible to use CE marking to demonstrate the conformity with the CPD Directive.

Report No.: LPT01012012
Applicant: SHENZHEN SUN GLOBAL GLASS CO., LTD.
Address: NO.34 FLOOR SA RUIJONG BUILDING, BUJIAOYUAN, LONGHANG DISTRICT, SHENZHEN GUANGDONG, CHINA
Manufacturer: SHENZHEN SUN GLOBAL GLASS CO., LTD.
Address: NO.34 FLOOR SA RUIJONG BUILDING, BUJIAOYUAN, LONGHANG DISTRICT, SHENZHEN GUANGDONG, CHINA
Product: TEMPERED GLASS
Model No.: Smart, Smart, Smart, Smart, Smart, Smart, Smart, Smart
Trade Mark: N/A
Test Standards: EN 12150-2:2004

The relevant test report(s) show that the product complies with the essential requirements in the above listed standards. The applicant is authorized to use this certificate in connection with the EC Declaration of CPD conformity according to the Directive.

CE

Shanghai, 27 October 2017

