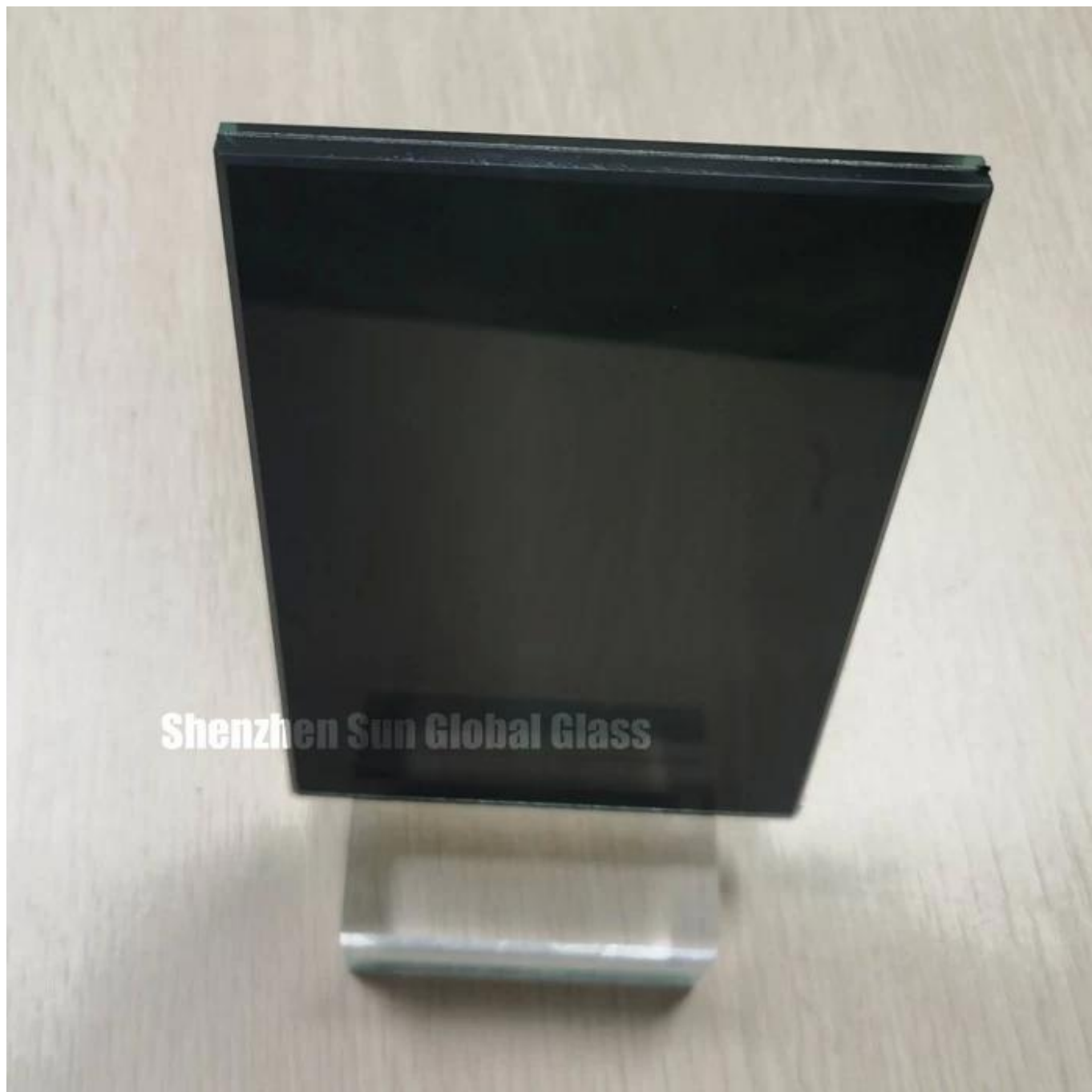


## SZG 10.76mm musta värilaminoitu lasi - CE- ja SGCC-sertifioidut laminoidut lasit valmistajat ja tehtaat Kiinassa

10.76mm musta pvb-värilaminoitu lasi on valmistettu kahdesta kerroksesta [5mm karkaistu lasi](#) voileipä mustalla värillä pvb yhdessä. Keskimäinen kerros on 0,76 mm mustaa PVB-kalvoa, kuumennuksen ja korkeapaineisen erikoisprosessin jälkeen, kaksi kerrosta lasin tarttuvuudesta. Laminaatioprosessin takia laminoitu lasi on erittäin vahva ja suojaa voimakkaasti murtumiselta. Laminoitu karkaistu lasi on turvallisin lasi nykyaikaisilla rakennuslasimarkkinoilla.





**erittely:**

Lasityyppi: 55,2 musta karkaistu laminoitu turvalasi

Muu lasin paksuus: 8,76 mm musta laminoitu lasi, 12,76 mm musta laminoitu lasi, 16,76 mm musta laminoitu lasi, 20,76 mm musta laminoitu lasi jne.

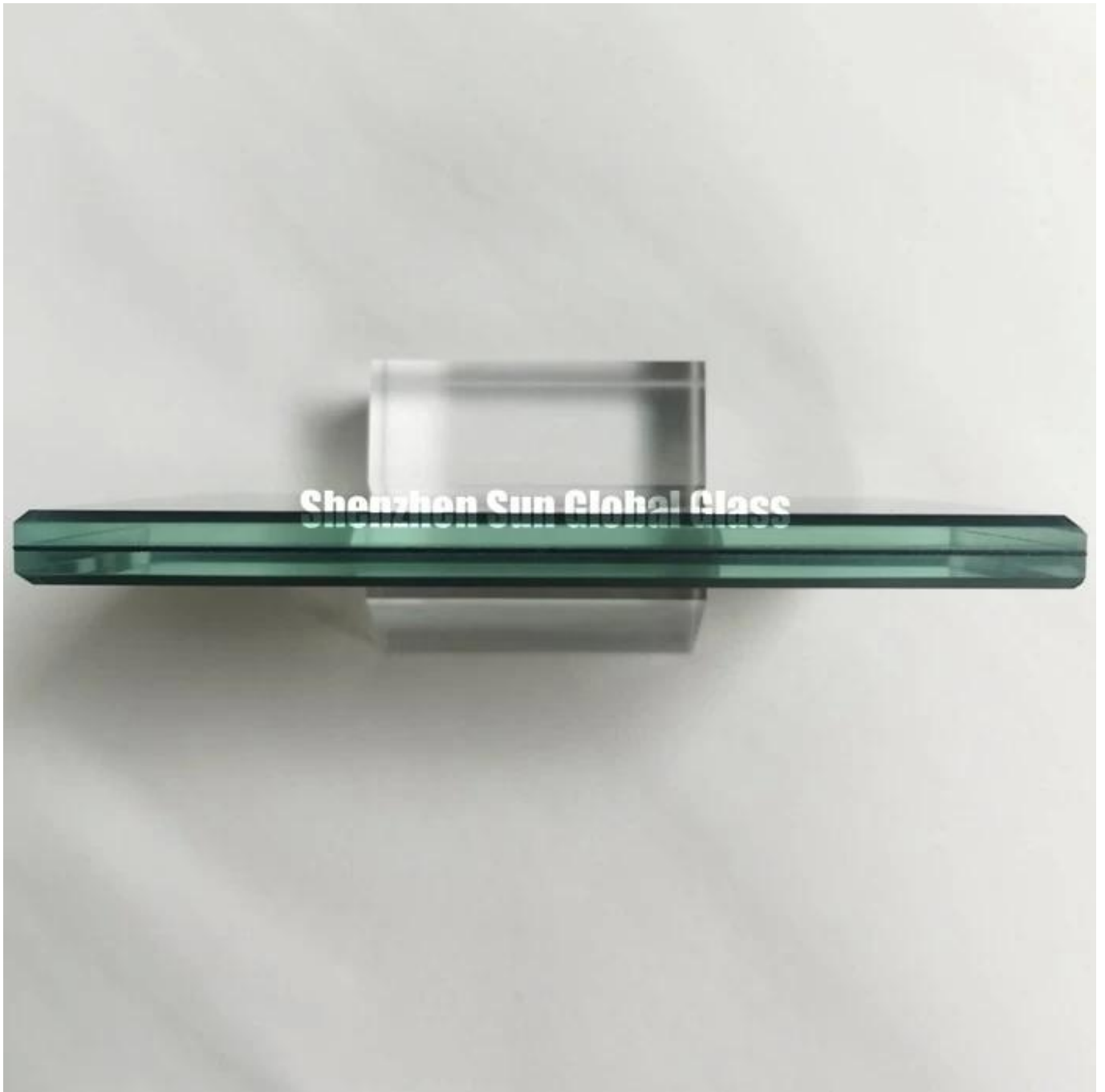
Saatavana oleva lasivalinta: kirkas lasi, vähän rautaa oleva lasi, vihreä lasi, pronssilasi, sininen lasi, harmaa lasi, happoetsattu lasi, silkkilasi, matala e -lasi jne.

PVB-paksuus: 0,76 mm pvb-laminoitu lasi, 1,14 mm PVB-laminoitu lasi, 1,52 mm PVB-laminoitu lasi, 1,9 mm PVB-laminoitu lasi jne.

Enimmäiskoko: 3300x12000 mm, räätälöity koko asiakkaan piirustuksen perusteella



Shenzhen Sun Global Glass



### **Musta PVB-laminoidun lasin ominaisuudet:**

1. Turvallisuuslasin ominaisuudet: laminoidun lasin rikkoutuminen ei pudota ja sitoutuu pvb-kalvolla. Se on eräänlainen turvalasin käyttö rakennuksessa.

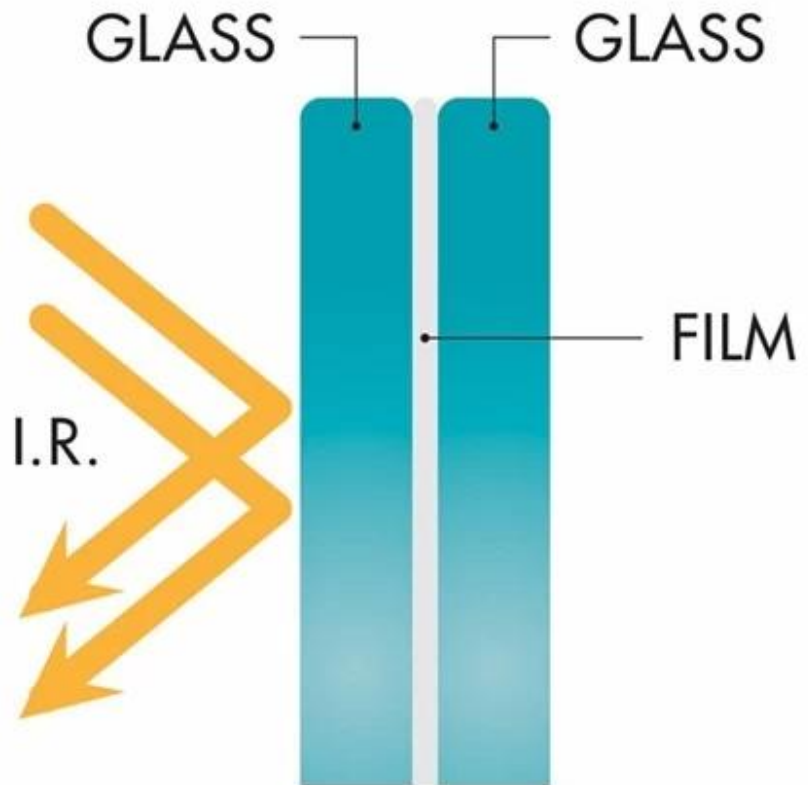
2. Muokatun lasin ominaisuudet: laminoitu karkaistu lasi rikkoutumisen jälkeen, särkyminen ei vahingoita ihmisiä, koska lasi murtuu pieniksi rakeiksi ja kiinnittyy pvb-kalvolla.

3. Musta laminoitu lasi tarjoaa lasille erinomaisen ulkonäön, sitä voidaan käyttää laajasti sisä- ja ulkotiloina, kuten väliseinä, ovi, aita jne.

4. Koska väri on pvb: stä eikä haalistu ajan myötä. Laminoitu lasipinta on sileä ja helppo puhdistaa.

5.UV-säteilykestävyys: musta laminoitu lasi vähentää UV-säteilyn tunkeutumista ja suojaa sisätiloissa olevia esineitä UV-säteiltä. On hyvä valinta pitää esineet auringonsäteilyltä.

6.Suojaa ihmisten yksityisyyttä: musta värilaminoitu lasi on läpinäkymätöntä, sillä on hyvä vaikutus ihmisten yksityisyyden suojelemiseen.



**Annealed Glass**

Breaks easily, typically in long sharp shards.



**Heat-strengthened glass**

Resistant to breakage, 2X as strong as annealed glass, breaks in large shards.



**Fully Tempered Glass**

Resistant to breakage, 4X as strong as annealed glass, shatters completely in small pieces, typically vacates the frame after impact.



**Laminated Glass**

Resistant to penetration, breaks upon impact, tends to keep shards intact upon and after breakage. Two or more pieces of glass adhered together by interlayer.

**Sovellukset:**

10,76 mm: n mustan pvb-laminoidun lasin käyttö sisä- ja ulkolasissa, sama kuin alla:

Lasiseinä

Lasiseinä

Lasiovi

Lasiaita / kaite

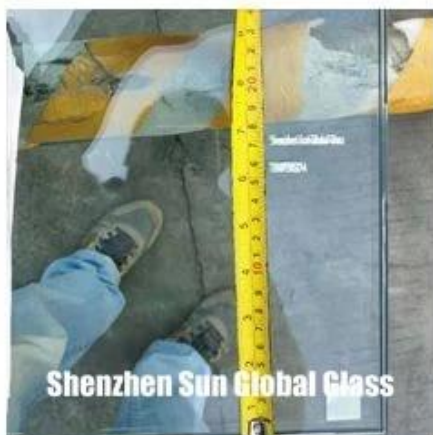
Sisustuslasi

**tarkastus:**

Tarkastamme huolellisesti ennen toimitusta.

Asiakkaan valtuuttama ammatillinen tarkastaja tarkastamaan lämpimästi.





## Laatusertifikaatit:

10,76 mm: n musta pvb-laminoitu lasi valmistetaan tiukasti ISO9001-laatu järjestelmän mukaisesti, ja se on läpäissyt seuraavat kotimaiset ja kansainväliset laatusandardit:

1. 10,76 mm: n musta pvb-laminoitu lasi täyttää CCC: n (kiinalainen turvalasi pakollinen sertifikaatti) vaatimukset.
2. 10,76 mm: n musta pvb-laminoitu lasi täyttää Kiinan laminoidun lasistandardin GB9962.
3. 10,76 mm: n musta pvb-laminoitu lasi täyttää eurooppalaisen turvalasistandardin EN12543, EN14449, amerikkalaisen turvalasin laatu SGCC ANSI Z97.



**QUALITY MANAGEMENT SYSTEM CERTIFICATE**

Certificate No. 1710021030006

Shenzhen Sun Global Glass Co., Ltd

Address: Room 20, Floor 3, China Materials 3 Hayes, Kowloon, Hong Kong, China, Shenzhen, China

ISO 9001:2015

The Quality Management System applies to the following class:  
 Sales of Building Glass (Float Glass, Tempered Glass, Laminated Glass, Insulated Glass, Mirror Glass and Other Safety Glass)  
 (Excluding Glass)

Date of Issue: Nov 09, 2014  
 Validity Period: 3 Years (From 2014 to 2017)

Issued by: *尹志忠*

For certificate with reference information and query to the website of Certification and Accreditation Administration of the People's Republic of China (www.cnca.gov.cn)

SHENZHEN SUN GLOBAL GLASS CO., LTD  
 Address: 301 Building, China Resources 1, China Resources Building, Shenzhen, China

**DECLARATION OF CONFORMITY**

Labtest Laboratory Certificate NO.: LBTC1011204

**EC Declaration of CPD Conformity**

The following product has been tested by Labtest Technology Laboratory Ltd. with the testing standards and found in conformity with the EC Council Directive of 89/105/EEC. It is possible to use CE marking to demonstrate the conformity with the CPD Directive.

Report No.: LBTC1011204

Applicant: SHENZHEN SUN GLOBAL GLASS CO., LTD  
 Address: NO.34 FLOOR SUN BUILDING SUN BUILDING FOUNDRY LONGGANG DISTRICT SHENZHEN GUANGDONG CHINA

Manufacturer: SHENZHEN SUN GLOBAL GLASS CO., LTD  
 Address: NO.34 FLOOR SUN BUILDING SUN BUILDING FOUNDRY LONGGANG DISTRICT SHENZHEN GUANGDONG CHINA

Product: TEMPERED GLASS

Model No.: Sun, Sun, Sun, Sun, Sun, Sun, Sun, Sun

Trade Mark: SUN

Test Standards: EN 12150-2:2004

The referred test reports show that the product complies with the essential requirements of the above listed standards. The applicant is authorized to use this certificate in connection with the EC Declaration of CPD conformity according to the Directive.

**CE**

This certificate of conformity is based on a single evaluation of the submitted samples of the above mentioned product. It does not imply an assessment of the whole production and other relevant Directives have to be observed.

Labtest Technology Laboratory, 100000 Shenzhen, China  
 Tel: 86 755 8122 1122 Fax: 86 755 8122 1122 Email: www.labtest.com

**DECLARATION OF CONFORMITY**

Labtest Laboratory Certificate NO.: LBTC1011204

**EC Declaration of CPD Conformity**

The following product has been tested by Labtest Technology Laboratory Ltd. with the testing standards and found in conformity with the EC Council Directive of 89/105/EEC. It is possible to use CE marking to demonstrate the conformity with the CPD Directive.

Report No.: LBTC1011204

Applicant: SHENZHEN SUN GLOBAL GLASS CO., LTD  
 Address: NO.34 FLOOR SUN BUILDING SUN BUILDING FOUNDRY LONGGANG DISTRICT SHENZHEN GUANGDONG CHINA

Manufacturer: SHENZHEN SUN GLOBAL GLASS CO., LTD  
 Address: NO.34 FLOOR SUN BUILDING SUN BUILDING FOUNDRY LONGGANG DISTRICT SHENZHEN GUANGDONG CHINA

Product: Insulated Glass

Model No.: Sun+Sun+Sun, Sun+Sun+Sun, Sun+Sun+Sun

Trade Mark: SUN

Test Standards: EN 1279-1

The referred test reports show that the product complies with the essential requirements of the above listed standards. The applicant is authorized to use this certificate in connection with the EC Declaration of CPD conformity according to the Directive.

**CE**

This certificate of conformity is based on a single evaluation of the submitted samples of the above mentioned product. It does not imply an assessment of the whole production and other relevant Directives have to be observed.

Labtest Technology Laboratory, 100000 Shenzhen, China  
 Tel: 86 755 8122 1122 Fax: 86 755 8122 1122 Email: www.labtest.com

**TÜV Rheinland Nederland B.V.**

**Test report**

Test report relating to a glass product according to European standard EN 14448, laminated safety glass, comprising the product marked as laminated safety glass 13,5mm, manufactured by SHENZHEN SUN GLOBAL GLASS CO., LTD.

Report number: RPT017-12

Date: 09 September 2017

Author(s): R. Buitendijk

Client: SHENZHEN SUN GLOBAL GLASS CO., LTD  
 301 Building, China Resources 1, China Resources Building, Shenzhen, China

Project number: RPT017

Project name: EN 14448-CPD1448-008

Number of pages: 10

Signature: *[Signature]*

Author of Report: R. Buitendijk

Responsible Engineer: *[Signature]*

Product: Laminated safety glass

Material: Glass

Standard: EN 14448

Test Method: CPD1448-008

Result: Pass

Remarks: The product complies with the requirements of the standard EN 14448:2012, clause 4.1.1. The product is suitable for use in accordance with the standard EN 14448:2012, clause 4.1.1.1.

Labtest Technology Laboratory, 100000 Shenzhen, China  
 Tel: 86 755 8122 1122 Fax: 86 755 8122 1122 Email: www.labtest.com

**SGS TEST REPORT**

Report No.: 2017040100000

Date: 20.09.2017

Page: 1 of 1

SHENZHEN SUN GLOBAL GLASS CO., LTD  
 NO.34 FLOOR SUN BUILDING SUN BUILDING FOUNDRY LONGGANG DISTRICT SHENZHEN GUANGDONG CHINA

The following sample was submitted and identified on behalf of the client as:

Sample Name: Glass  
 Sample Description: Laminated safety glass according to EN 14448  
 Date of Report: 20.09.2017  
 Test Method: EN 14448:2012, clause 4.1.1

Test results: Please refer to the following report.

Signature: *Chandler*

Author of Report: Chandler

Responsible Engineer: *[Signature]*

Product: Laminated safety glass

Material: Glass

Standard: EN 14448

Test Method: CPD1448-008

Result: Pass

Remarks: The product complies with the requirements of the standard EN 14448:2012, clause 4.1.1. The product is suitable for use in accordance with the standard EN 14448:2012, clause 4.1.1.1.

SGS Testing Services, 100000 Shenzhen, China  
 Tel: 86 755 8122 1122 Fax: 86 755 8122 1122 Email: www.sgs.com

**FTL Penetration Testing Laboratory, Inc.**

Quality Assurance Division

Report Date: 09/27/2018

Page: 1 of 1

Report Number: 18-001

Client: SHENZHEN SUN GLOBAL GLASS CO., LTD

Product: Laminated safety glass

Material: Glass

Standard: EN 14448

Test Method: CPD1448-008

Result: Pass

Remarks: The product complies with the requirements of the standard EN 14448:2012, clause 4.1.1. The product is suitable for use in accordance with the standard EN 14448:2012, clause 4.1.1.1.

Signature: *[Signature]*

Author of Report: *[Signature]*

Responsible Engineer: *[Signature]*

Product: Laminated safety glass

Material: Glass

Standard: EN 14448

Test Method: CPD1448-008

Result: Pass

Remarks: The product complies with the requirements of the standard EN 14448:2012, clause 4.1.1. The product is suitable for use in accordance with the standard EN 14448:2012, clause 4.1.1.1.

FTL Penetration Testing Laboratory, Inc., 100000 Shenzhen, China  
 Tel: 86 755 8122 1122 Fax: 86 755 8122 1122 Email: www.ftl.com