

4mm clair verre trempé pour serre - meilleurs fournisseurs et fabricants de verre à effet de serre en Chine

Il existe deux types de verre pour serre: le verre trempé clair et le verre trempé à faible teneur en fer. Afin d'obtenir plus de lumière directe du soleil, il est préférable de choisir le verre trempé ultra-clair à utiliser comme serre, et il doit être en verre trempé pour empêcher le verre de se briser. [Verre clair 4mm](#) la transmission lumineuse à effet de serre peut atteindre 89% et le verre à faible teneur en fer de 4mm peut atteindre 96%.



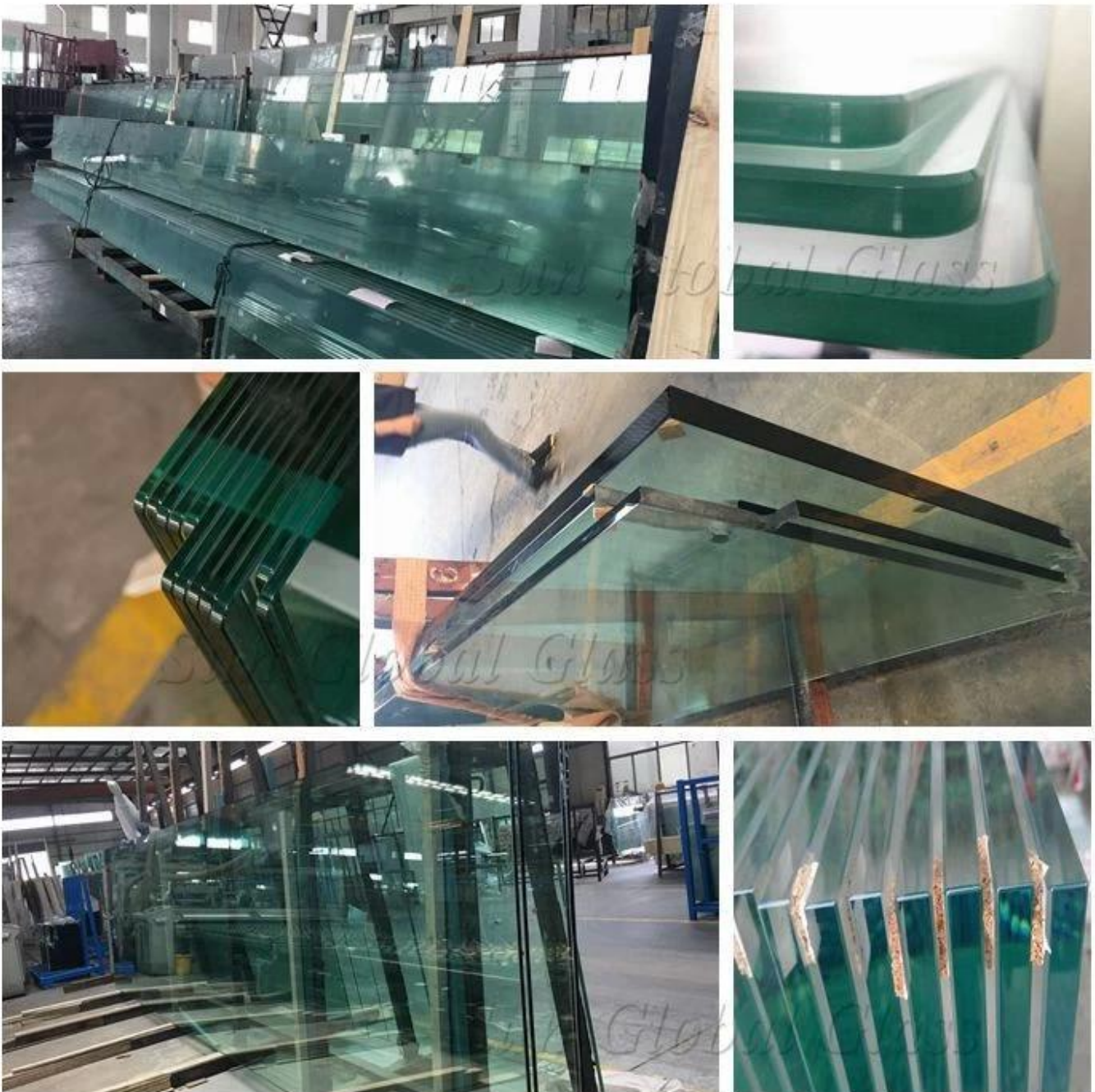
Spécification:

Type de verre: Verre trempé

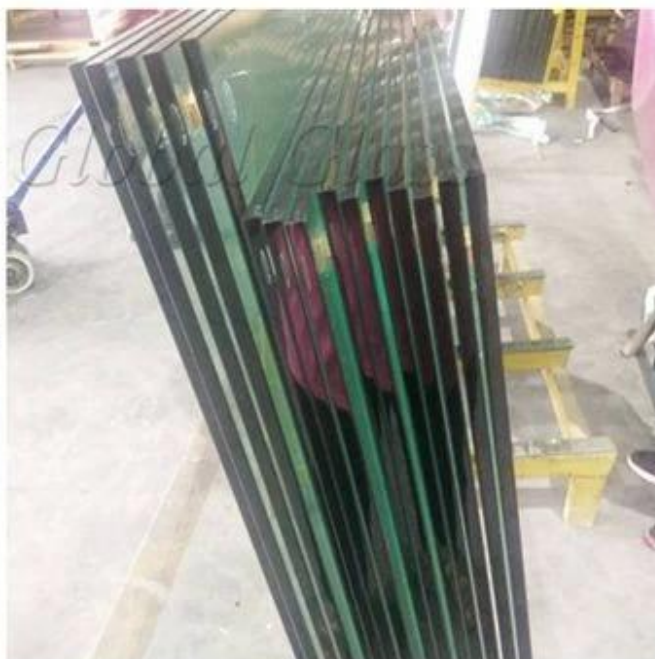
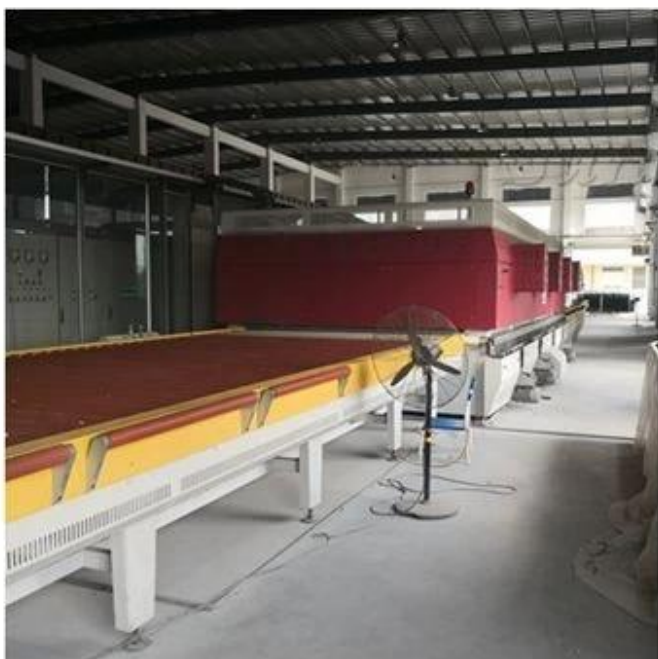
Épaisseur: 4mm 5mm 6mm 8mm 10mm etc

Taille maximale: 3300x13000mm, tailles personnalisées en fonction du dessin

Détails du processus: les arêtes et les autres processus seront identiques à ceux du dessin des clients.



Production de verre à effet de serre:



Contrôle de qualité:

Sun Global Glass fournit des verres à effet de serre conformes aux normes suivantes:

1. La serre en verre trempé transparent de 4mm est conforme à la norme de sécurité en verre BS 6206 UK.
2. La serre en verre trempé de 4mm transparent est conforme à la norme européenne de sécurité de verre EN 12150 CE.
3. La serre en verre trempé de 4mm transparent rencontre la certification obligatoire du verre de sécurité chinois (CCC).
4. La serre en verre trempé de 4mm transparent répond à la norme chinoise GB11944 pour le verre isolant.
5. La serre en verre trempé de 4mm transparent rencontre le standard de verre américain de sécurité de SGCC.

TUV Rheinland

Verification of Conformity

Glass in building - Laminated glass and laminated safety glass -
Evaluation of conformity / Product standard
EN 14449:2005
(This standard is covered by the registered patent 09/007337/001)

The product in the certificate, laminated safety glass manufactured by **SHENZHEN SUN GLOBAL GLASS CO., LTD.** is in conformity with the requirements for Performance Testing according to the above-mentioned European standard. The results obtained in conformity with the applicable standards. The test results and the content of the certificate of conformity are available on the Internet. The results are valid as long as the certificate and glass in the above-mentioned standard are not subject to changes.

Company: Name: SHENZHEN SUN GLOBAL GLASS CO., LTD.
Address: #1 Qiyang Avenue Building, Shenzhen West District
City: Shuangyuan, Shenzhen, Guangdong
Country: China

Production location: Name: SHENZHEN SUN GLOBAL GLASS CO., LTD.
Address: #1 Qiyang Avenue Building, Shenzhen West District
City: Shuangyuan, Shenzhen, Guangdong
Country: China

Product: Laminated Safety Glass
Model: SHENZHEN SUN GLOBAL GLASS CO., LTD.
Standard: SHENZHEN SUN GLOBAL GLASS CO., LTD.
Material: SHENZHEN SUN GLOBAL GLASS CO., LTD.
Marking: SHENZHEN SUN GLOBAL GLASS CO., LTD.

Shenzhen, 27 October 2011



QUALITY MANAGEMENT SYSTEM

CERTIFICATE

Certificate No. 1810101200006

We hereby certify that
Shenzhen Sun Global Glass Co., Ltd
located at: Room 27, Floor 1, Qiyang Avenue, Shuangyuan, Honggang, Longgang, Shenzhen, Shenzhen, China

has been awarded this certificate for conformance with the standard
ISO 9001:2015

The Quality Management System Applies to the following area:
Rules of Building Glass (Heat Glass, Tempered Glass, Laminated Glass, Insulated Glass, Mirror Glass and other Building Glass)

Applicable Clause:
4

Date of Issue: Nov 09, 2010 Date of Validity: Nov 09, 2015

Surveillance Audit (The first time)	Surveillance Audit (The second time)	Surveillance Audit (The third time)

(The quality management system is subject to yearly surveillance audit under the period of validity the certificate is valid only, which must together with an acceptance record of surveillance audit issued by SGS.)

Signed by: 

This certificate and its relevant information can access to the website: www.sgs.com.cn

SHENZHEN SUN GLOBAL GLASS CO., LTD. (1810101200006)
Address: #1, Qiyang Avenue, Room 27, Floor 1, Shuangyuan, Honggang, Longgang District, Shenzhen, China

Certificate No. 1810101200006

EC Declaration of CPD Conformity

The following product has been tested by LUTBER Technology Laboratories Ltd. with the following elements and found to be in conformity with the CE Conformity Directive of 90/269/EEC. It is possible to use CE marking to demonstrate the conformity with the CPD Directive.

Report No.: 1810101200006

Applicant: SHENZHEN SUN GLOBAL GLASS CO., LTD.
Address: #1 Qiyang Avenue Building, Shenzhen West District, Shuangyuan, Shenzhen, Guangdong, China

Manufacturer: SHENZHEN SUN GLOBAL GLASS CO., LTD.
Address: #1 Qiyang Avenue Building, Shenzhen West District, Shuangyuan, Shenzhen, Guangdong, China

Product: TEMPERED GLASS

Model No.: Sun, Sun, Sun, Sun, Sun, Sun, Sun

Trade Mark: N/A

Test Standard: EN 12150-2:2004

The relevant test results show that the product complies with the essential requirements in the above-mentioned standard. The applicant is authorized to use the certificate in conformity with the CE Declaration of CPD conformity according to the Directive.

CE



The certificate of conformity is based on a single evaluation of the submitted samples of the above-mentioned product. It does not imply an assessment of the whole production and other relevant Directive have to be observed.

LUTBER Technology Laboratories Ltd. (1810101200006)
Address: #1, Qiyang Avenue, Room 27, Floor 1, Shuangyuan, Honggang, Longgang District, Shenzhen, China

SGS TEST REPORT

Report No. 1810101200006

Sample Name: SHENZHEN SUN GLOBAL GLASS CO., LTD.

Product: SHENZHEN SUN GLOBAL GLASS CO., LTD.

Material: SHENZHEN SUN GLOBAL GLASS CO., LTD.

Marking: SHENZHEN SUN GLOBAL GLASS CO., LTD.

Standard: SHENZHEN SUN GLOBAL GLASS CO., LTD.

Model No.: SHENZHEN SUN GLOBAL GLASS CO., LTD.

Trade Mark: SHENZHEN SUN GLOBAL GLASS CO., LTD.

Test Standard: SHENZHEN SUN GLOBAL GLASS CO., LTD.

Signature: 

SGS logo at bottom left.

SGS TEST REPORT

Report No. 1810101200006

Sample Name: SHENZHEN SUN GLOBAL GLASS CO., LTD.

Product: SHENZHEN SUN GLOBAL GLASS CO., LTD.

Material: SHENZHEN SUN GLOBAL GLASS CO., LTD.

Marking: SHENZHEN SUN GLOBAL GLASS CO., LTD.

Standard: SHENZHEN SUN GLOBAL GLASS CO., LTD.

Model No.: SHENZHEN SUN GLOBAL GLASS CO., LTD.

Trade Mark: SHENZHEN SUN GLOBAL GLASS CO., LTD.

Test Standard: SHENZHEN SUN GLOBAL GLASS CO., LTD.

Signature: 

SGS logo at bottom left.

SGS TEST REPORT

Report No. 1810101200006

Sample Name: SHENZHEN SUN GLOBAL GLASS CO., LTD.

Product: SHENZHEN SUN GLOBAL GLASS CO., LTD.

Material: SHENZHEN SUN GLOBAL GLASS CO., LTD.

Marking: SHENZHEN SUN GLOBAL GLASS CO., LTD.

Standard: SHENZHEN SUN GLOBAL GLASS CO., LTD.

Model No.: SHENZHEN SUN GLOBAL GLASS CO., LTD.

Trade Mark: SHENZHEN SUN GLOBAL GLASS CO., LTD.

Test Standard: SHENZHEN SUN GLOBAL GLASS CO., LTD.

Signature: 

SGS logo at bottom left.

DECLARATION OF CONFORMITY

Certificate No. 1810101200006

EC Declaration of CPD Conformity

The following product has been tested by LUTBER Technology Laboratories Ltd. with the following elements and found to be in conformity with the CE Conformity Directive of 90/269/EEC. It is possible to use CE marking to demonstrate the conformity with the CPD Directive.

Report No.: 1810101200006

Applicant: SHENZHEN SUN GLOBAL GLASS CO., LTD.
Address: #1 Qiyang Avenue Building, Shenzhen West District, Shuangyuan, Shenzhen, Guangdong, China

Manufacturer: SHENZHEN SUN GLOBAL GLASS CO., LTD.
Address: #1 Qiyang Avenue Building, Shenzhen West District, Shuangyuan, Shenzhen, Guangdong, China

Product: TEMPERED GLASS

Model No.: Sun, Sun, Sun, Sun, Sun, Sun, Sun

Trade Mark: N/A

Test Standard: EN 12150-2:2004

The relevant test results show that the product complies with the essential requirements in the above-mentioned standard. The applicant is authorized to use the certificate in conformity with the CE Declaration of CPD conformity according to the Directive.

CE



The certificate of conformity is based on a single evaluation of the submitted samples of the above-mentioned product. It does not imply an assessment of the whole production and other relevant Directive have to be observed.

LUTBER Technology Laboratories Ltd. (1810101200006)
Address: #1, Qiyang Avenue, Room 27, Floor 1, Shuangyuan, Honggang, Longgang District, Shenzhen, China

SGS TEST REPORT

Report No. 1810101200006

Sample Name: SHENZHEN SUN GLOBAL GLASS CO., LTD.

Product: SHENZHEN SUN GLOBAL GLASS CO., LTD.

Material: SHENZHEN SUN GLOBAL GLASS CO., LTD.

Marking: SHENZHEN SUN GLOBAL GLASS CO., LTD.

Standard: SHENZHEN SUN GLOBAL GLASS CO., LTD.

Model No.: SHENZHEN SUN GLOBAL GLASS CO., LTD.

Trade Mark: SHENZHEN SUN GLOBAL GLASS CO., LTD.

Test Standard: SHENZHEN SUN GLOBAL GLASS CO., LTD.

Signature: 

SGS logo at bottom left.

Certificate No. DP100P14000

SentryGlas

DuPont Glass Laminating Solutions

is pleased to confirm that the company:

SHENZHEN SUN GLOBAL GLASS CO., Ltd

has successfully passed the qualification process of SentryGlas on May, 2014.

This certificate is valid until the date shown in the below table as long as your manufacturing process for laminated safety glass remains unchanged. Renewal is subject to validation of newly supplied laminates.

Date: 2014-05-29 By DuPont: 

VALIDITY	VALIDITY	VALIDITY	VALIDITY	VALIDITY	VALIDITY	VALIDITY	VALIDITY
2014.5.29	2014.6.6	2014.6.13	2014.6.20	2014.6.27	2014.7.4	2014.7.11	2014.7.18

In certifying the certificate, SentryGlas (LUTBER) does not assume any liability for the responsibility of the respective customer, which is the sole party responsible for the correctness of the product's conformity with applicable laws, regulations, rules and/or standards' governing conformity.