

7mm claires ondulations usine de verre u-profil épais, feuilles de verre de canal U, verre en forme de U économique pour mur de construction.

Le profilé en verre profilé en U de 7 mm d'épaisseur est également appelé verre profilé. Le processus de traitement consiste à utiliser le premier procédé de production continue par laminage et post-formage. Grâce à sa section transversale, il est de type "U", ainsi nommé. Une grande variété de verres en forme de "U", idéaux pour la qualité de la lumière, la conservation de la chaleur et une résistance mécanique élevée, non seulement largement utilisés, faciles à installer et décoratifs, ce produit est le matériau de construction de premier choix pour les murs intérieurs et extérieurs, cloisons, toits et fenêtres etc.

Caractéristiques du verre profilé en U

1. Léger, réduire le poids de la construction, les formes de lumière peuvent augmenter la surface utile du bâtiment.
2. Isolation phonique, isolation thermique, amélioration de l'environnement pour économiser de l'énergie. Les informations décrites dans le verre d'isolation phonique à double gorge sont de 38 dB, le coefficient de transfert de chaleur est de 1,74 W / m². K, et le coefficient de transfert de chaleur du verre simple de 6 mm est de 3,65 W / m².K. Le verre de type traversant en termes de réduction de la consommation énergétique du bâtiment est un type de matériau de mur idéal.
3. Sécurité, résistance à la corrosion, perméable à l'éclairage de la forme idéale des matériaux pour murs.
4. Construction facile, économique et pratique.

Application:

Le verre profilé clair et épais peut être utilisé dans les murs intérieurs et extérieurs, les cloisons et les toits des bâtiments industriels et civils des aéroports, des gares, des stades, des usines, des immeubles de bureaux, des hôtels, des maisons et des serres.

Spécification:

Nom du verre: Verre à profilé en U transparent de 7 mm d'épaisseur

Épaisseur: 7mm

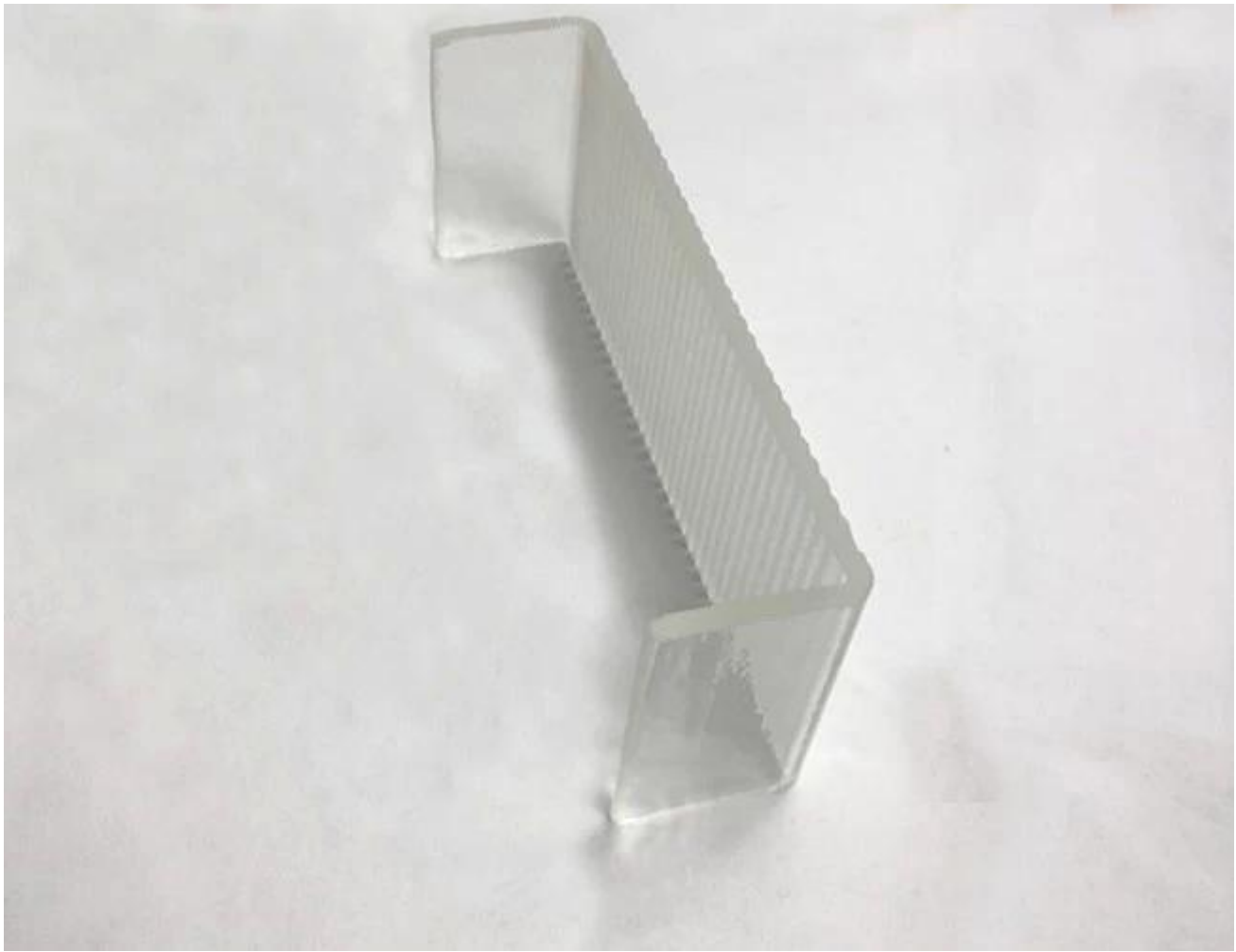
Taille: Demande du client

Technique: verre clair, verre figuré, verre givré, verre trempé, teinté

Longueur maximale: 6000mm

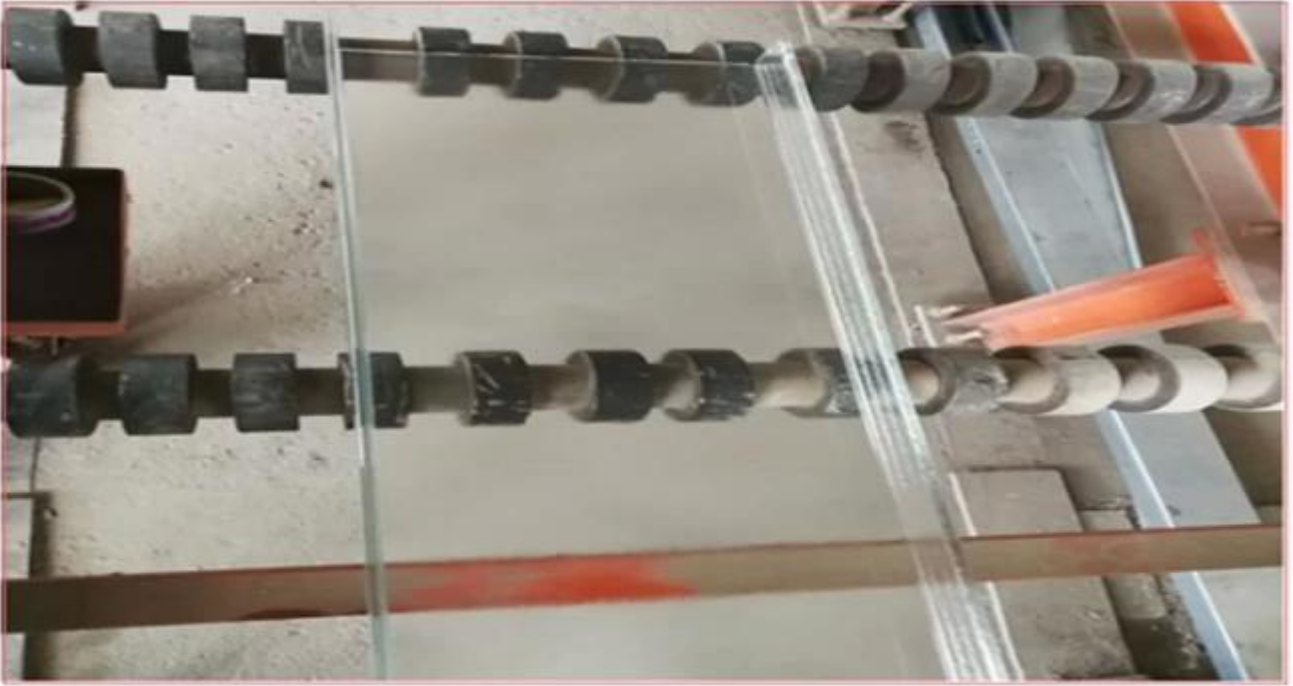
Fonction: Verre dépoli à l'acide, Verre décoratif, Verre absorbant la chaleur.





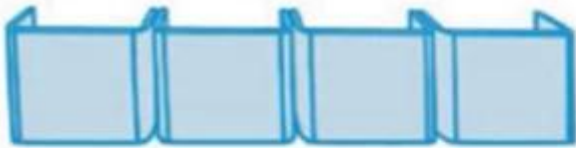
Gamme de produits:



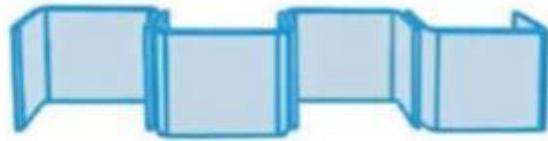


Profil de verre profilé en U:

Single glazing Flange outside(inside)



Sheep-pile Strung inside



Sheep-pile Interlocking



Double glazing Stagger arrangement



Double glazing Standard arrangement



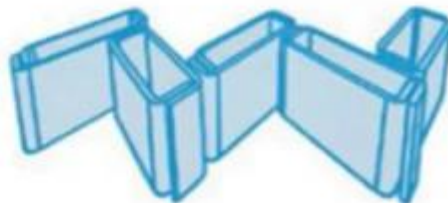
Double glazing Flange to flange



Double glazing Slightly curved



Double glazing Arranged in zig-zag formation in pairs



Spectacle d'application:

Le verre profilé en U est le matériau de construction de premier choix pour les murs intérieurs, les murs extérieurs, les cloisons, les fenêtres, etc.



Le profilé en verre est conforme aux normes européennes, nord-américaines et chinoises, ISO, CCC, CE, BS6206, EN12510, etc.

Verification of Conformity
 Evaluation of conformity / Product standard
EN 14449:2005
 (The mark is referred to the original test report: 401100114002)

The product in the certificate: Laminated Safety Glass, manufactured by SHENZHEN SUN GLOBAL GLASS CO., LTD. was submitted to the manufacturer for Performance Testing according to the dimensional / European standard. The results showed compliance with the applicable requirements. The test results and the content of this certificate of Conformity, including issues in the tested samples. The results remain valid as long as the certificate has been in the above mentioned standard and no further applications.

Company Name: SHENZHEN SUN GLOBAL GLASS CO., LTD.
Address: 3F, Qiangyuan Building, Shuangyuan Road, Luoyang, Henan, Zhengzhou, Henan, China

Manufacturer Name: SHENZHEN SUN GLOBAL GLASS CO., LTD.
Address: 3F, Qiangyuan Building, Shuangyuan Road, Luoyang, Henan, Zhengzhou, Henan, China

Product: Laminated Safety Glass
Mark: SHENZHEN SUN GLOBAL GLASS CO., LTD.
Address: 3F, Qiangyuan Building, Shuangyuan Road, Luoyang, Henan, Zhengzhou, Henan, China

Test Standard: EN 14449:2005

Shanghai, 27 October 2017




Shenzhen Sun Global Glass Co., Ltd.
 a glass's manufacturer to supply

SHENZHEN SUN GLOBAL GLASS CO., Ltd
 has successfully passed the qualification process of Iso9001 in Nov. 2014

The certificate is valid until the date shown in the below table as long as your manufacturing process for laminated safety glass remains unchanged. Renewal is subject to validation (each supplied laminates)

Date: 2017-10-27

SAFED	SAFED	SAFED	SAFED	SAFED	SAFED	SAFED	SAFED
2017	2018	2019	2020	2021	2022	2023	2024

Shanghai, 27 October 2017



DECLARATION OF CONFORMITY

EC Declaration of CPD Conformity


The following product has been tested by Labtest Technology Laboratory Ltd. with the following standards and found in conformity with the EC Council Directive of 89/105/EEC. It is possible to use CE marking to demonstrate the conformity with the CPD Directive.

Report No.: LPTC121202
Applicant: SHENZHEN SUN GLOBAL GLASS CO., LTD.
Address: NO.34 FLOOR SA RUIJUNING BUILDING, BUJIAOYUAN, LONGHANG DISTRICT, SHENZHEN GUANGDONG, CHINA
Manufacturer: SHENZHEN SUN GLOBAL GLASS CO., LTD.
Address: NO.34 FLOOR SA RUIJUNING BUILDING, BUJIAOYUAN, LONGHANG DISTRICT, SHENZHEN GUANGDONG, CHINA
Product: Insulated Glass
Material: Tempered Glass, Clear, 12mm, 15mm, 19mm
Trade Mark: N/A
Test Standard: EN ISO 1278-8

The relevant test report(s) show that the product complies with the essential requirements in the above listed standards. The applicant is authorized to use this certificate in connection with the EC Declaration of CPD conformity according to the Directive.

CE

Shanghai, 27 October 2017



DECLARATION OF CONFORMITY

Professional glass manufacturer

The following product has been tested by Labtest Technology Laboratory Ltd. with the following standards and found in conformity with the EC Council Directive of 89/105/EEC. It is possible to use CE marking to demonstrate the conformity with the CPD Directive.

Report No.: LPTC121203
Applicant: SHENZHEN SUN GLOBAL GLASS CO., LTD.
Address: NO.34 FLOOR SA RUIJUNING BUILDING, BUJIAOYUAN, LONGHANG DISTRICT, SHENZHEN GUANGDONG, CHINA
Manufacturer: SHENZHEN SUN GLOBAL GLASS CO., LTD.
Address: NO.34 FLOOR SA RUIJUNING BUILDING, BUJIAOYUAN, LONGHANG DISTRICT, SHENZHEN GUANGDONG, CHINA
Product: TEMPERED GLASS
Material: Tempered Glass, Clear, 12mm, 15mm, 19mm
Trade Mark: N/A
Test Standard: EN 12150-2:2004

The relevant test report(s) show that the product complies with the essential requirements in the above listed standards. The applicant is authorized to use this certificate in connection with the EC Declaration of CPD conformity according to the Directive.

CE

Shanghai, 27 October 2017



QUALITY MANAGEMENT SYSTEM

CERTIFICATE

The quality management system of SHENZHEN SUN GLOBAL GLASS CO., LTD. has been certified for compliance with the standard **ISO 9001:2015**.

The Quality Management System applies in the following area:
 Sales of Insulating Glass (IGU) Glass, Tempered Glass, Laminated Glass, Insulated Glass, Mirror Glass and Clear Safety Glass

Shanghai, 27 October 2017



DECLARATION OF CONFORMITY

Professional glass manufacturer

The following product has been tested by Labtest Technology Laboratory Ltd. with the following standards and found in conformity with the EC Council Directive of 89/105/EEC. It is possible to use CE marking to demonstrate the conformity with the CPD Directive.

Report No.: LPTC121204
Applicant: SHENZHEN SUN GLOBAL GLASS CO., LTD.
Address: NO.34 FLOOR SA RUIJUNING BUILDING, BUJIAOYUAN, LONGHANG DISTRICT, SHENZHEN GUANGDONG, CHINA
Manufacturer: SHENZHEN SUN GLOBAL GLASS CO., LTD.
Address: NO.34 FLOOR SA RUIJUNING BUILDING, BUJIAOYUAN, LONGHANG DISTRICT, SHENZHEN GUANGDONG, CHINA
Product: TEMPERED GLASS
Material: Tempered Glass, Clear, 12mm, 15mm, 19mm
Trade Mark: N/A
Test Standard: EN 12150-2:2004

The relevant test report(s) show that the product complies with the essential requirements in the above listed standards. The applicant is authorized to use this certificate in connection with the EC Declaration of CPD conformity according to the Directive.

CE

Shanghai, 27 October 2017

