

SGG 5MM Clear Tempered Glass- can meet CE/ BS 6206 Standard Quality

Clear Tempered Glass is cut [clear float glass](#) into custom size, then pass them into temperd furnace, which the heating to near glass softening point of 700 degrees, then rapidly cooled, which let the outer surface of the glass in a state of high compression, and the core or center of glass in compensating tension. This production process make clear tempered glass to be a safety glass that 4-5 times stronger than ordinary annealed glass, that is why tempered glass also called safety toughened glass.

Please note that tempered glass can not be cut any more, even grinding edges, or other processing. Thus all design details of toughened glass must be confirmed before mass production. Like edge polishing, drilling holes, cut outs, etc.

Featurers:

- 1. Strength:** clear tempered glass is up to 4-5 times stronger than ordinary annealed float glass. The toughening process has greatly reduced the risk of thermal breakage.
- 2. Breakage & Safety:** when broken occurs, clear tempered glass will break into small cubic fragments that do harmless to human body
- 3. Multiple functions:** By change the glass substrate type, tempered glass could remain the features of this glass, meanwhile strength the glass. For example, low-e tempered glass, it is energy efficiency but also strong strengthened. It also can be laminated, insulated, and printed for specific requirements of different clients.
- 4. Cut & Polishing:** all types of edges, holes, and cut outs for different accessories. Our accurate cutting and measurements promoted the implementation of installers.

Applications:

[Tempered glass](#) is defined as toughened glass that has been treated by heat or chemicals to increase its strength. Thus it has many benefits and uses which makes it a popular glass used in many home and commercial building projects.

1. Clear tempered glass 5mm is widely used directly glass shelves, glass window, etc.
2. 5mm Clear toughened glass can be laminated with another glass panel, to be a tempered laminated safety glass for glass railings, glass roof, glass wall, glass
3. Toughened clear glass 5mm can also be insulated, to be sound proof and heat control.

Specifications:

Sun Global Glass supply tempered glass with full range of colors, thickness and glass substrates.

- 1. Glass colors:** clear, extra clear, frosted, bronze, grey, green, blue, red, white, black, reflective glass colors, printed colors, and low-E tempered glass.
- 2. Glass thickness:** 4mm 5mm 6mm 8mm 10mm 12mm 15mm 19mm
- 3. Glass size:** minimum size 300x300mm, maximum size length 8000mm
- 4. Edge work:** Flat polished edge, chamfer edge, beveled edge, waved edge, OGEE edge, triple OG edge, and others.
- 5. Drilling holes:** holes diameter need to be bigger than glass thickness.
- 6. Cut outs:** all types of cut outs for different accessories. Our accurate cutting and measurements promoted the implementation of installers.
- 7. Safe corner:** safety corner could greatly reduce the hurt to human by attack.

Quality:

1. Conforms to the standards of Europe, North American and China: ISO, CCC, CE, BS6206, EN12510, ANSI Z97.
2. High strength and puer clean surface. Select 40% of high quality clear glass for tempering.
3. Excellent work on details: smooth edge polishing, drilling holes tolerance +/- 0.9mm
4. Strong wooden crates package.

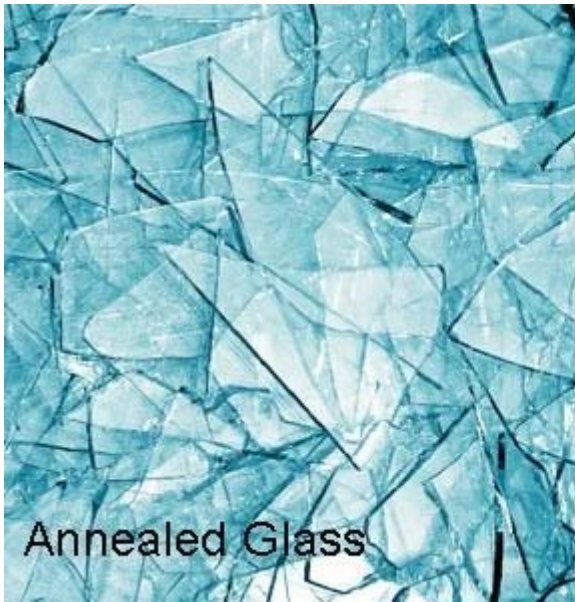
Product Details:

Product pictures of 5mm Clear Tempered Glass:



Differences between [Annealed Glass](#) and [Tempered Glass](#):

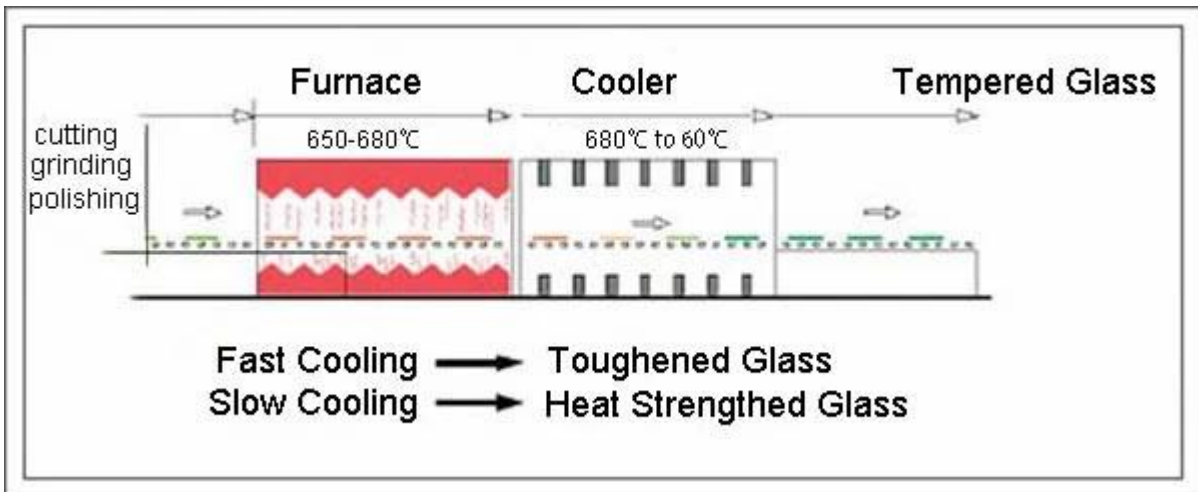
1. 5mm clear tempered glass reduces the risk of injury due to its nature of breaking into small, circular pieces instead of sharp, jagged shards.
2. 5mm clear toughened windows is ease of clean-up if they ever do break.
3. 5mm safety toughened glass is 5 times strength than [5mm clear float glass](#).



Holes and Cut outs:



Production Line:

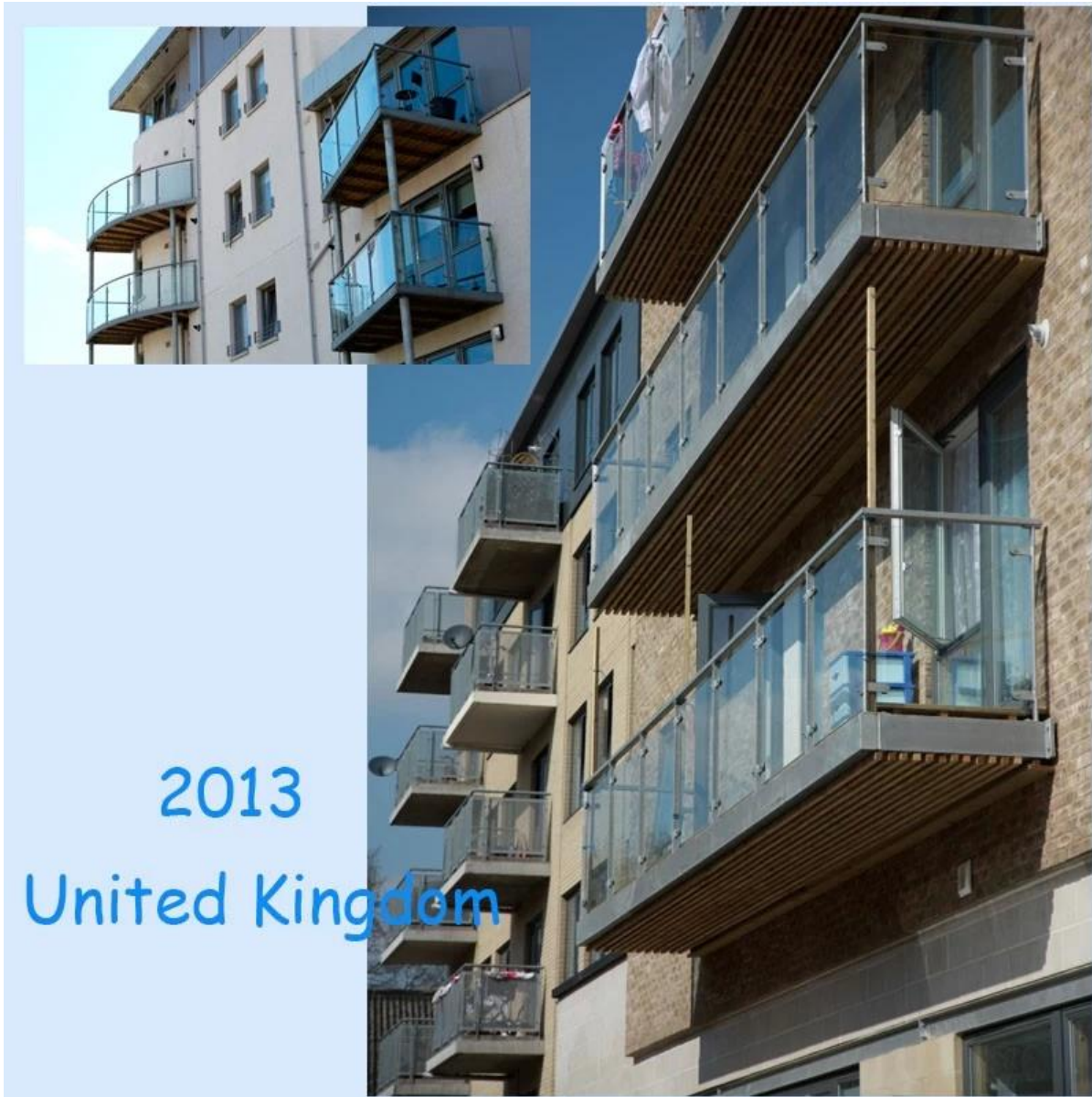




Package and Loading:



Our Projects:



Our promise is that you receiving 5mm clear tempered glass with high quality and safety condition from us.