

## **9.52mm+12A+10mm Low E reflective insulated glass, 31.52mm Low E reflective glass panel, double glazed low E reflective glass.**

Low-E insulated glass is one kind of energy-saving glass, 9.52mm+12A+10mm low-E double panel insulated glass is coated a coloured and clear metallic compound upon on glass surface, the tip of feature is heat insulation and ultraviolet-proof, it also be called new green environment-protect building material. It's the first good choice to be used in building glass.

### **Compared double-silver coating low e reflective glass and single-silver coating low e reflective glass.**

Single-silver coating low e reflective glass is coated with one silver layer and the double-silver low e reflective glass is coated two silver coatings. The U-value of double low E coating glass is lower.

Double-silver coating low e reflective glass can prevent more solar energy than single-silver coating low e reflective glass. Thus, double low e reflective glass is more widely used as window, curtain walls, doors, etc. for energy saving.

### **Features:**

- 1.High visible light transmittance: for the glass of same thickness combination, the visible light transmittance of double low e reflective glass is better.
- 2.High visible light reflectance: The reflectance is higher, the more glass reflects.
- 3.U-value: The lower U-value, the heat insulation performance will be better.
- 4.SC-value: The lower SC-value, the less solar heat transferred to indoor.

### **Specification:**

Glass name: Low e reflective double panel insulated glass

Color: Gray

Overall thickness: 9.52mm+12mm spacer+10mm insulated reflective glass

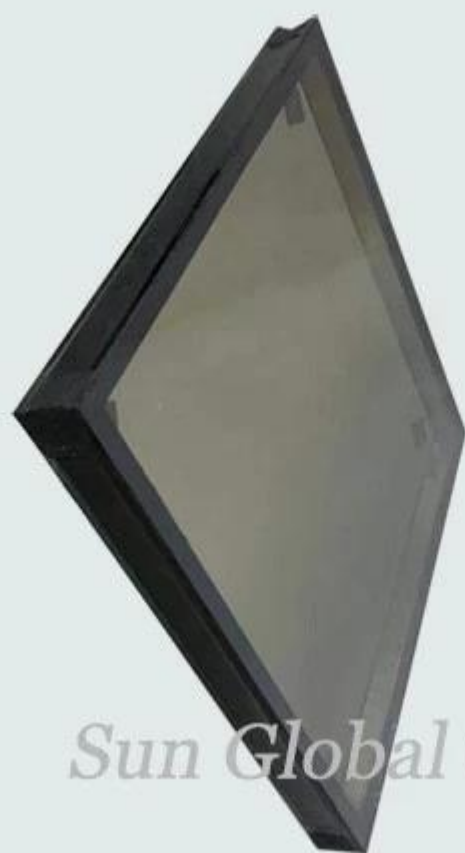
Features□Energy-saving: sun shading/heat preservation/sound insulation

Function: Keep the indoor cooler in summer & warmer in winter.

Sound proof: Good effects for sound insulation.

Single panel thickness: 4-12mm

Quality standard: ISO, CCC, CE, BS6206, EN12510, SGCC, etc.



**Production line:**





## Application:

9.52mm+12A+10mm Low E reflective double insulated glass is applied to office, building curtain walls, windows, doors, etc.



**Quality certification**, ISO, CCC, CE, BS6206, SGCC, etc.

**Verification of Conformity**  
No. 1444/2005

Glass in building - Laminated glass and laminated safety glass -  
Evaluation of conformity - Product standard  
EN 16649:2005  
(the scope is limited to the original test report No. 1444/2005)

The product in the certificate: Laminated Safety Glass, manufactured by SHENZHEN SUN GLOBAL GLASS CO., LTD. was submitted to the manufacturer for Performance Testing according to the administrative European standard. The results showed compliance with the applicable requirements. The test results and the content of this certificate of conformity are available in the test report. The results remain valid as long as the conditions laid down in the above mentioned standard are not modified significantly.

Company Name: SHENZHEN SUN GLOBAL GLASS CO., LTD.  
Address: 3F, Shengyuan Building, Shengyuan Road, Xixiang  
City: Pingliang, Jiangxi, Pingliang, Jiangxi  
Country: China

Manufacturer Name: SHENZHEN SUN GLOBAL GLASS CO., LTD.  
Address: 3F, Shengyuan Building, Shengyuan Road, Xixiang  
City: Pingliang, Jiangxi, Pingliang, Jiangxi  
Country: China

Product: Laminated Safety Glass  
Model: SHENZHEN SUN GLOBAL GLASS CO., LTD.  
Address: 3F, Shengyuan Building, Shengyuan Road, Xixiang  
City: Pingliang, Jiangxi, Pingliang, Jiangxi  
Country: China

Remarks: Technically required glass is used to make the product.

TUV Rheinland (Shanghai) Co., Ltd.  
No. 111 Lane 111, Shengyuan Road, Xixiang  
City: Pingliang, Jiangxi, Pingliang, Jiangxi  
Country: China

Shanghai, 27 October 2017

Certificate No. 1201012305

**Debut Class Laminated Solutions**

is placed in conformity to company:

**SHENZHEN SUN GLOBAL GLASS CO., Ltd**

has successfully passed the qualification process of Debut Class in May 2014

The certificate is valid until the date shown in the below table as long as your manufacturing process for laminated safety glass remains unchanged. Renewal is subject to validation of each supplied laminates.

Date: 2017-10-27

Validity:

2017-10-27	2018-10-27	2019-10-27	2020-10-27	2021-10-27	2022-10-27	2023-10-27	2024-10-27
------------	------------	------------	------------	------------	------------	------------	------------

Each certificate holder (the manufacturer) is responsible for maintaining the validity of the certificate. If the certificate holder is not in compliance with the requirements of the certificate, the certificate holder is responsible for the consequences.

**DECLARATION OF CONFORMITY**

**EC Declaration of CPD Conformity**

The following product has been tested by TUV Rheinland Technology Laboratory Ltd. with the following standards and found in conformity with the EC Council Directive of 89/100/EEC. It is possible to use CE marking to demonstrate the conformity with the CPD Directive.

Report No.: 1201012305

Applicant: SHENZHEN SUN GLOBAL GLASS CO., LTD.

Address: NO. 34 FLOOR, 34 FLOOR BUILDING, SHENGYUAN ROAD, LONGGANG DISTRICT, SHENZHEN GUANGDONG, CHINA

Manufacturer: SHENZHEN SUN GLOBAL GLASS CO., LTD.

Address: NO. 34 FLOOR, 34 FLOOR BUILDING, SHENGYUAN ROAD, LONGGANG DISTRICT, SHENZHEN GUANGDONG, CHINA

Product: Laminated Glass

Model No.: SHENZHEN SUN GLOBAL GLASS CO., LTD.

Trade Mark: N/A

Test Standards: EN ISO 1279-8

The relevant test report(s) show that the product complies with the essential requirements in the above listed standards. The applicant is authorized to use this certificate in connection with the EC Declaration of CPD conformity according to the Directive.

CE

TUV Rheinland Technology Laboratory Ltd.  
Shanghai, 27 October 2017

**DECLARATION OF CONFORMITY**

**Professional glass manufacturer**

The following product has been tested by TUV Rheinland Technology Laboratory Ltd. with the following standards and found in conformity with the EC Council Directive of 89/100/EEC. It is possible to use CE marking to demonstrate the conformity with the CPD Directive.

Report No.: 1201012305

Applicant: SHENZHEN SUN GLOBAL GLASS CO., LTD.

Address: NO. 34 FLOOR, 34 FLOOR BUILDING, SHENGYUAN ROAD, LONGGANG DISTRICT, SHENZHEN GUANGDONG, CHINA

Manufacturer: SHENZHEN SUN GLOBAL GLASS CO., LTD.

Address: NO. 34 FLOOR, 34 FLOOR BUILDING, SHENGYUAN ROAD, LONGGANG DISTRICT, SHENZHEN GUANGDONG, CHINA

Product: TEMPERED GLASS

Model No.: SHENZHEN SUN GLOBAL GLASS CO., LTD.

Trade Mark: N/A

Test Standards: EN 12150-2:2004

The relevant test report(s) show that the product complies with the essential requirements in the above listed standards. The applicant is authorized to use this certificate in connection with the EC Declaration of CPD conformity according to the Directive.

CE

TUV Rheinland Technology Laboratory Ltd.  
Shanghai, 27 October 2017

**QUALITY MANAGEMENT SYSTEM**

**CERTIFICATE**

Certificate No.: 1201012305

The facility certifies that:

**Shenzhen Sun Global Glass Co., Ltd**

located at: 3F, Shengyuan Building, Shengyuan Road, Xixiang, Pingliang, Jiangxi, China

is in possession of a:

**Quality Management System**

has been awarded this certificate for compliance with the standard:

**ISO 9001:2015**

The Quality Management System applies to the following area:

Production of Laminated Glass (First Class, Tempered Glass, Laminated Glass, Insulated Glass, Mirror Glass and Other Glass Products)

Applicable Clause:

8.5.1, 8.5.2, 8.5.3, 8.5.4, 8.5.5, 8.5.6, 8.5.7, 8.5.8, 8.5.9, 8.5.10, 8.5.11, 8.5.12, 8.5.13, 8.5.14, 8.5.15, 8.5.16, 8.5.17, 8.5.18, 8.5.19, 8.5.20, 8.5.21, 8.5.22, 8.5.23, 8.5.24, 8.5.25, 8.5.26, 8.5.27, 8.5.28, 8.5.29, 8.5.30, 8.5.31, 8.5.32, 8.5.33, 8.5.34, 8.5.35, 8.5.36, 8.5.37, 8.5.38, 8.5.39, 8.5.40, 8.5.41, 8.5.42, 8.5.43, 8.5.44, 8.5.45, 8.5.46, 8.5.47, 8.5.48, 8.5.49, 8.5.50, 8.5.51, 8.5.52, 8.5.53, 8.5.54, 8.5.55, 8.5.56, 8.5.57, 8.5.58, 8.5.59, 8.5.60, 8.5.61, 8.5.62, 8.5.63, 8.5.64, 8.5.65, 8.5.66, 8.5.67, 8.5.68, 8.5.69, 8.5.70, 8.5.71, 8.5.72, 8.5.73, 8.5.74, 8.5.75, 8.5.76, 8.5.77, 8.5.78, 8.5.79, 8.5.80, 8.5.81, 8.5.82, 8.5.83, 8.5.84, 8.5.85, 8.5.86, 8.5.87, 8.5.88, 8.5.89, 8.5.90, 8.5.91, 8.5.92, 8.5.93, 8.5.94, 8.5.95, 8.5.96, 8.5.97, 8.5.98, 8.5.99, 8.5.100

Date of Issue: New 09/2016

Supervision Audit (The first time)

Supervision Audit (The second time)

Supervision Audit (The third time)

The quality management system is subject to regular surveillance audits within the period of validity of the certificate is valid only when used together with an appropriate notice of full compliance with the standard.

Issued by: TUV Rheinland

Shanghai, 27 October 2017

**DECLARATION OF CONFORMITY**

**Professional glass manufacturer**

Glass in building - Laminated glass and laminated safety glass -  
Evaluation of conformity - Product standard  
EN 16649:2005  
(the scope is limited to the original test report No. 1444/2005)

The product in the certificate: Laminated Safety Glass, manufactured by SHENZHEN SUN GLOBAL GLASS CO., LTD. was submitted to the manufacturer for Performance Testing according to the administrative European standard. The results showed compliance with the applicable requirements. The test results and the content of this certificate of conformity are available in the test report. The results remain valid as long as the conditions laid down in the above mentioned standard are not modified significantly.

Company Name: SHENZHEN SUN GLOBAL GLASS CO., LTD.  
Address: 3F, Shengyuan Building, Shengyuan Road, Xixiang  
City: Pingliang, Jiangxi, Pingliang, Jiangxi  
Country: China

Manufacturer Name: SHENZHEN SUN GLOBAL GLASS CO., LTD.  
Address: 3F, Shengyuan Building, Shengyuan Road, Xixiang  
City: Pingliang, Jiangxi, Pingliang, Jiangxi  
Country: China

Product: Laminated Safety Glass  
Model: SHENZHEN SUN GLOBAL GLASS CO., LTD.  
Address: 3F, Shengyuan Building, Shengyuan Road, Xixiang  
City: Pingliang, Jiangxi, Pingliang, Jiangxi  
Country: China

Remarks: Technically required glass is used to make the product.

TUV Rheinland (Shanghai) Co., Ltd.  
No. 111 Lane 111, Shengyuan Road, Xixiang  
City: Pingliang, Jiangxi, Pingliang, Jiangxi  
Country: China

Shanghai, 27 October 2017