

Vetro temperato trasparente da 4 mm per serra - i migliori fornitori e produttori di vetro per serra in Cina

Esistono due tipi di vetro per serra, vetro temperato trasparente e vetro temperato a basso contenuto di ferro. Per ottenere direttamente più luce solare, è meglio scegliere un vetro temperato ultra chiaro da utilizzare come serra, e deve essere in vetro temperato per evitare che il vetro si rompa. [Vetro trasparente 4mm](#) la trasmissione della luce in serra può raggiungere l'89% e il vetro a basso contenuto di ferro da 4 mm può raggiungere il 96%.



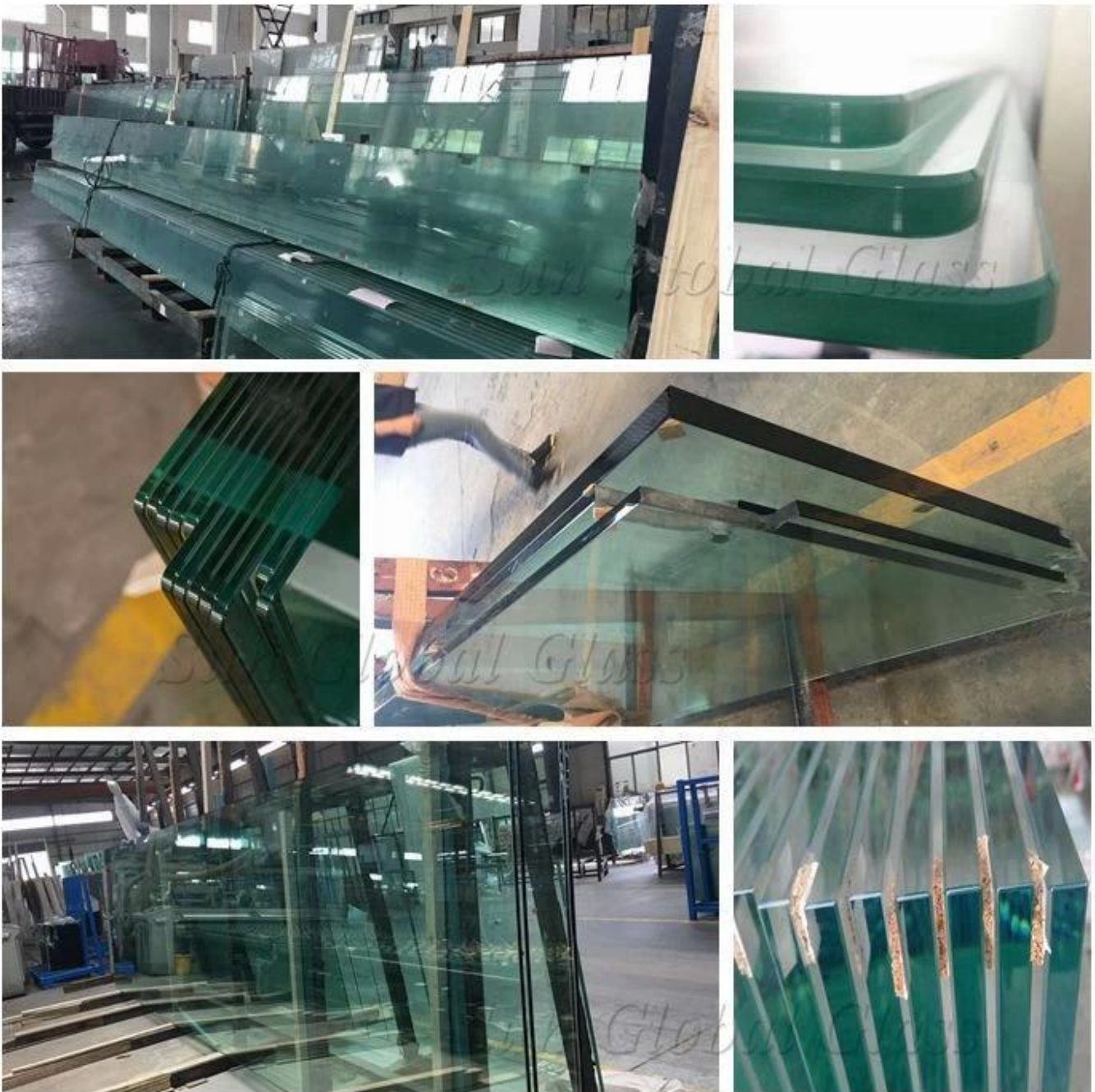
Specifica:

Tipo di vetro: vetro temperato di sicurezza

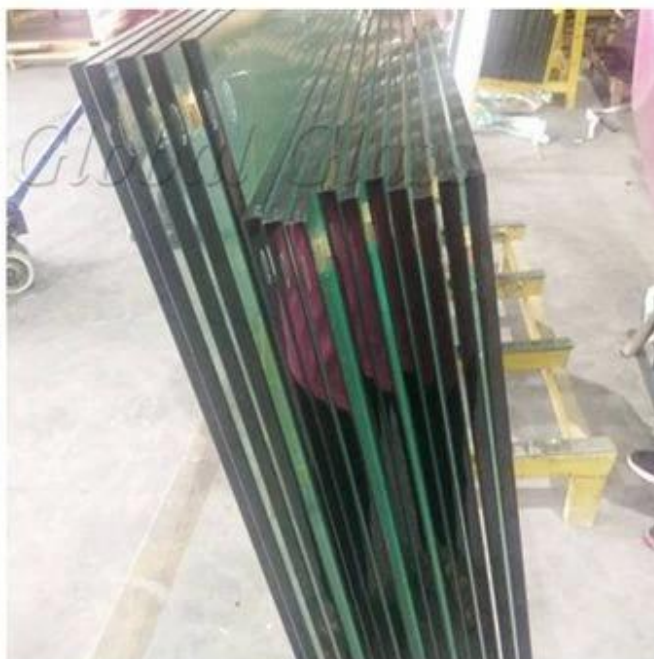
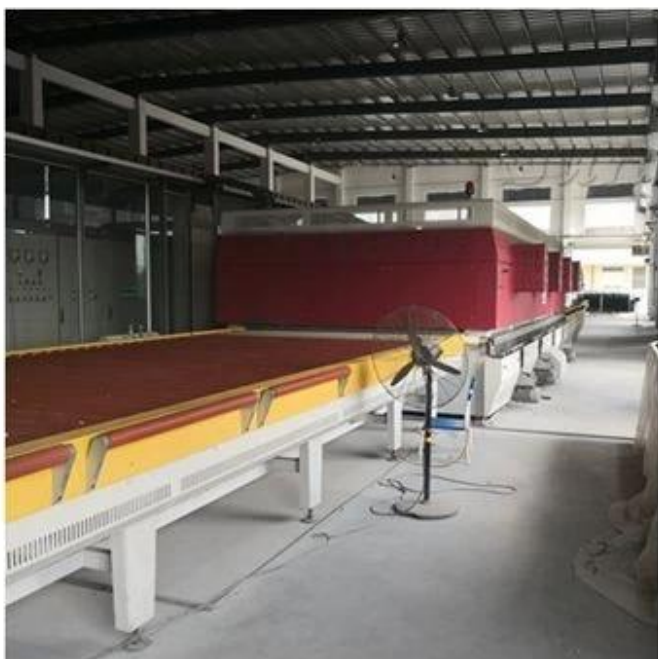
Spessore: 4mm 5mm6mm 8mm 10mm ecc

Dimensioni massime: 3300x13000mm, dimensioni personalizzate basate sul disegno

Dettagli del processo: i bordi e altri processi saranno esattamente gli stessi del disegno dei clienti.



Produzione di vetro per serra:



Controllo di qualità:

Sun Global Glass fornisce vetro per serra conforme ai seguenti standard:

1. La serra in vetro temperato trasparente da 4 mm è conforme allo standard BS 6206 per il vetro di sicurezza del Regno Unito.
2. La serra di vetro temprato trasparente da 4 mm è conforme allo standard europeo di sicurezza EN 12150 CE.
3. La serra di vetro temprato trasparente da 4 mm soddisfa la certificazione obbligatoria cinese di vetro di sicurezza (CCC).
4. La serra in vetro temperato trasparente da 4 mm soddisfa lo standard cinese in vetro isolante GB11944.
5. La serra in vetro temperato trasparente da 4 mm soddisfa lo standard di sicurezza americano SGCC.



Verification of Conformity
No. 1870421200000

**Glass in building - Laminated glass and laminated safety glass -
Evaluation of conformity / Product standard
EN 14449:2005**
(This standard is covered by the registered patent 1000000000000000)

The product in the certificate, Laminated Safety Glass manufactured by **SHENZHEN SUN GLOBAL GLASS CO., LTD** was submitted for the manufacturer's Performance Testing according to the above-mentioned European standard. The results obtained, according to the applicable standards, are in full conformity with the requirements of the standard. The certificate is valid until the date of expiry of the certificate, which is the date of expiry of the certificate, which is the date of expiry of the certificate, which is the date of expiry of the certificate.

Company: Name: SHENZHEN SUN GLOBAL GLASS CO., LTD
Address: #1 Qiyang Avenue Building, Shenzhen, Guangdong
City: Shenzhen, China

Manufacturer: Name: SHENZHEN SUN GLOBAL GLASS CO., LTD
Address: #1 Qiyang Avenue Building, Shenzhen, Guangdong
City: Shenzhen, China

Product: Laminated Safety Glass
Model: SHENZHEN SUN GLOBAL GLASS CO., LTD
Standard: EN 14449:2005
Remarks: Laminated safety glass is used to make the building.

Shenzhen, 27 October 2017




**QUALITY MANAGEMENT SYSTEM
CERTIFICATE**

Certificate No.: 1870421200000

We hereby certify that
Shenzhen Sun Global Glass Co., Ltd
located at: #1 Qiyang Avenue Building, Shenzhen, Guangdong, China
Address: #1 Qiyang Avenue Building, Shenzhen, Guangdong, China
has been awarded this certificate for compliance with the standard
ISO 9001:2015

The Quality Management System Applies to the following area:
Rules of Building Glass (Heat Glass, Tempered Glass, Laminated Glass, Insulated Glass, Mirror Glass and other Building Glass)

Date of Issue: Nov 09, 2016 Date of Validity: Nov 09, 2019

Surveillance Audit (The first time)	Surveillance Audit (The second time)	Surveillance Audit (The third time)

(The quality management system is subject to yearly surveillance audit under the period of validity the certificate is valid only, which used together with an Recurrence Period of Surveillance Audit issued by SGS.)

Signed by: 

This certificate and its relevant information can access to the website: www.sgs.com.cn

SHENZHEN SUN GLOBAL GLASS CO., LTD
Address: #1 Qiyang Avenue Building, Shenzhen, Guangdong, China

Certificate No.: 1870421200000

EC Declaration of CPD Conformity

The following product has been tested by LUTBER Technology Laboratories Ltd. with the being elements and found in conformity with the CE Conformity Directive of 90/269/EEC. It is possible to use CE marking to demonstrate the conformity with the CPD Directive.

Report No.: 1870421200000

Applicant: SHENZHEN SUN GLOBAL GLASS CO., LTD
#1 Qiyang Avenue Building, Shenzhen, Guangdong, China

Manufacturer: SHENZHEN SUN GLOBAL GLASS CO., LTD
#1 Qiyang Avenue Building, Shenzhen, Guangdong, China

Product: TEMPERED GLASS

Model No.: Sun, Sun, Sun, Sun, Sun, Sun, Sun

Trade Mark: N/A

Test Standard: EN 12150-2:2004

The relevant test results show that the product complies with the essential requirements in the above-mentioned standard. The applicant is authorized to use the certificate in compliance with the CE Declaration of CPD conformity according to the Directive.

The certificate of conformity is based on a single evaluation of the submitted samples of the above-mentioned product. It does not imply an assessment of the whole production and other elements (Directive have to be observed).

LUTBER Technology Laboratories Ltd. Test Facility, Phoenix, UK
No. 10, Phoenix Road, Phoenix, UK
Tel: +44 (0)1823 752222 Fax: +44 (0)1823 752223

SGS TEST REPORT

No. 1870421200000
Page 1 of 1

Reference: SHENZHEN SUN GLOBAL GLASS CO., LTD
Address: #1 Qiyang Avenue Building, Shenzhen, Guangdong, China

The following product has been tested by SGS according to the following standard:
Standard: EN 14449:2005
Product: Laminated Safety Glass
Model: SHENZHEN SUN GLOBAL GLASS CO., LTD
Remarks: Laminated safety glass is used to make the building.

Shenzhen, 27 October 2017



SGS TEST REPORT

No. 1870421200000
Page 1 of 1

Reference: SHENZHEN SUN GLOBAL GLASS CO., LTD
Address: #1 Qiyang Avenue Building, Shenzhen, Guangdong, China

The following product has been tested by SGS according to the following standard:
Standard: EN 14449:2005
Product: Laminated Safety Glass
Model: SHENZHEN SUN GLOBAL GLASS CO., LTD
Remarks: Laminated safety glass is used to make the building.

Shenzhen, 27 October 2017



SGS TEST REPORT

No. 1870421200000
Page 1 of 1

Reference: SHENZHEN SUN GLOBAL GLASS CO., LTD
Address: #1 Qiyang Avenue Building, Shenzhen, Guangdong, China

The following product has been tested by SGS according to the following standard:
Standard: EN 14449:2005
Product: Laminated Safety Glass
Model: SHENZHEN SUN GLOBAL GLASS CO., LTD
Remarks: Laminated safety glass is used to make the building.

Shenzhen, 27 October 2017



Certificate No.: 1870421200000

EC Declaration of CPD Conformity

The following product has been tested by LUTBER Technology Laboratories Ltd. with the being elements and found in conformity with the CE Conformity Directive of 90/269/EEC. It is possible to use CE marking to demonstrate the conformity with the CPD Directive.

Report No.: 1870421200000

Applicant: SHENZHEN SUN GLOBAL GLASS CO., LTD
#1 Qiyang Avenue Building, Shenzhen, Guangdong, China

Manufacturer: SHENZHEN SUN GLOBAL GLASS CO., LTD
#1 Qiyang Avenue Building, Shenzhen, Guangdong, China

Product: TEMPERED GLASS

Model No.: Sun, Sun, Sun, Sun, Sun, Sun, Sun

Trade Mark: N/A

Test Standard: EN 12150-2:2004

The relevant test results show that the product complies with the essential requirements in the above-mentioned standard. The applicant is authorized to use the certificate in compliance with the CE Declaration of CPD conformity according to the Directive.

The certificate of conformity is based on a single evaluation of the submitted samples of the above-mentioned product. It does not imply an assessment of the whole production and other elements (Directive have to be observed).

LUTBER Technology Laboratories Ltd. Test Facility, Phoenix, UK
No. 10, Phoenix Road, Phoenix, UK
Tel: +44 (0)1823 752222 Fax: +44 (0)1823 752223

SGS TEST REPORT

No. 1870421200000
Page 1 of 1

Reference: SHENZHEN SUN GLOBAL GLASS CO., LTD
Address: #1 Qiyang Avenue Building, Shenzhen, Guangdong, China

The following product has been tested by SGS according to the following standard:
Standard: EN 14449:2005
Product: Laminated Safety Glass
Model: SHENZHEN SUN GLOBAL GLASS CO., LTD
Remarks: Laminated safety glass is used to make the building.

Shenzhen, 27 October 2017



Certificate No.: DP10GP14000

DuPont Glass Laminating Solutions

in pleased to confirm that the company:
SHENZHEN SUN GLOBAL GLASS CO., Ltd
has successfully passed the qualification process of SentryGlastm on May, 2014.

This certificate is valid until the date shown in the below table as long as your manufacturing process for laminated safety glass remains unchanged. Renewal is subject to validation of newly supplied laminates.

Date: 2014-05-29 By DuPont: 

VALIDITY	VALIDITY	VALIDITY	VALIDITY	VALIDITY	VALIDITY	VALIDITY	VALIDITY
2014.5.29	2014.5.29	2014.5.29	2014.5.29	2014.5.29	2014.5.29	2014.5.29	2014.5.29

In authorizing the certificate, DuPont Technology Laboratories Ltd. does not assume any liability for the responsibility of the signatory company, which is the sole party responsible for the correctness of the product's conformity with applicable laws, regulations, rules and/or standards' governing conformity.