

SZG tdoor SZG 17.14mm

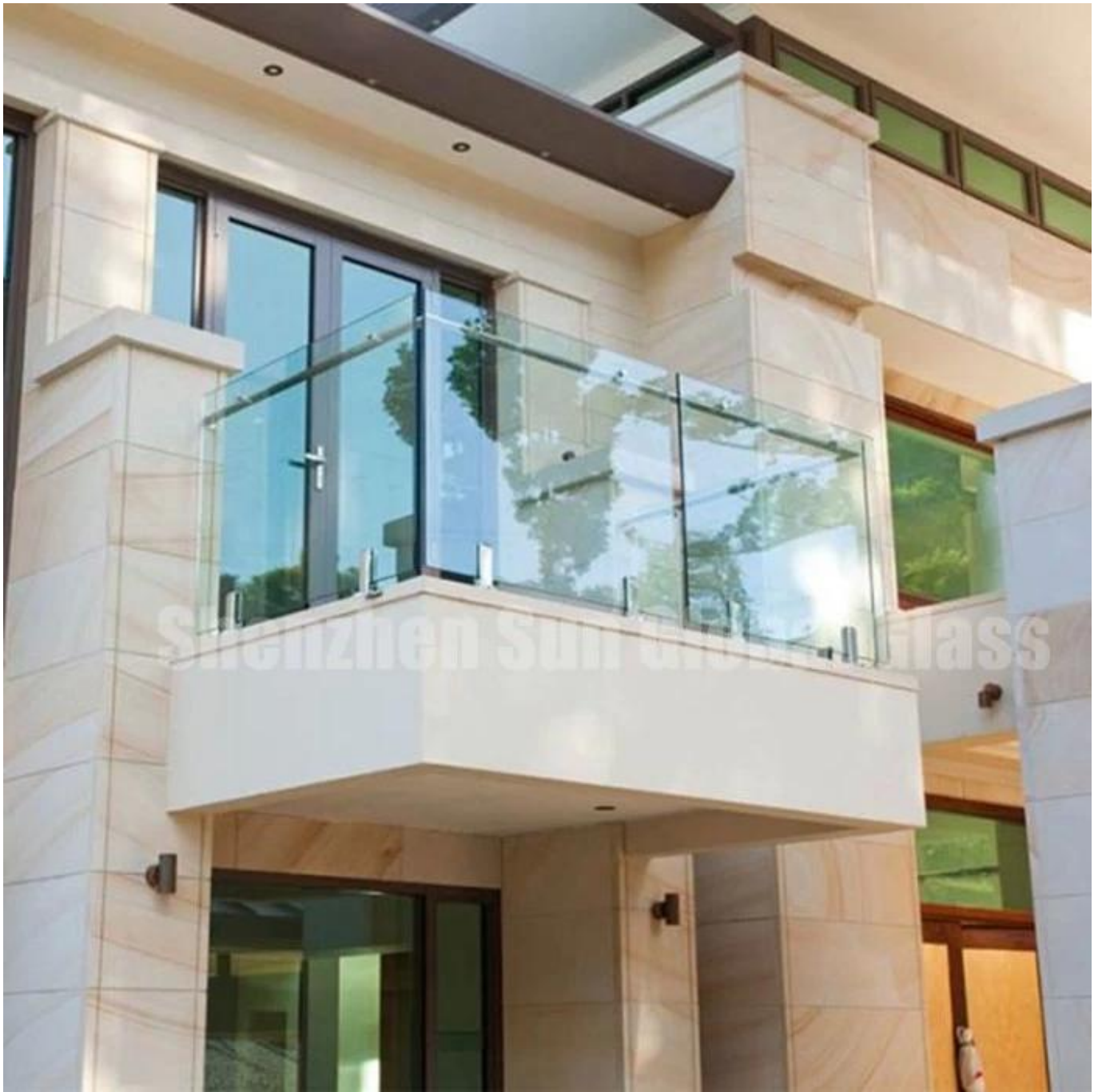
-u rer

17.14mm u lar

req u ired

O u r 17.14mm u tdoor sed U

Al u min u m + c u stomer req u EST



**17.14mm** u

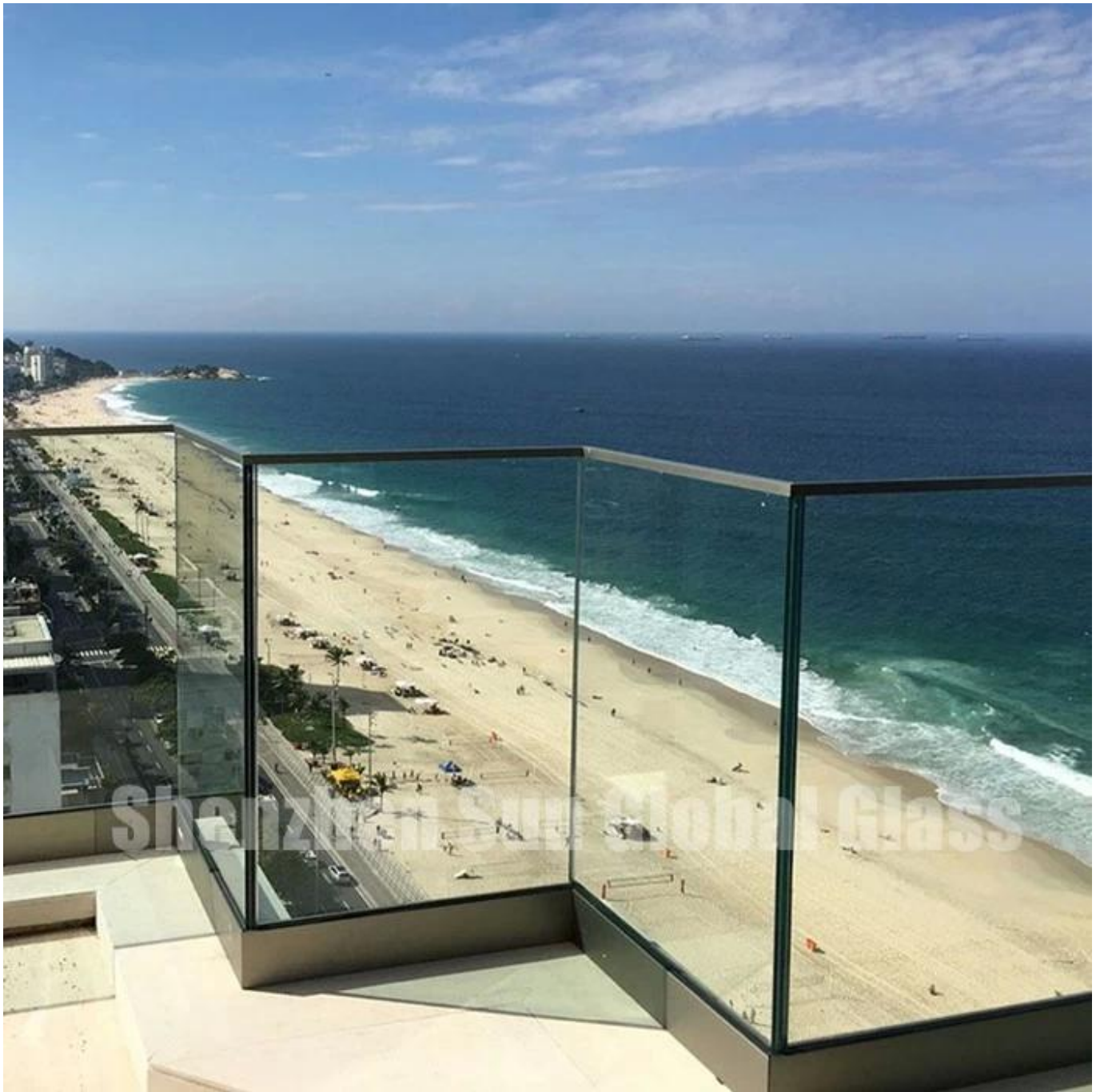
ct

H ig q u + Al u m c u stomers

u ltra

u

8mm 10mm 12mm / u 6mm + 1.14 + 6mm 8mm + 1.14 + 8mm 10mm + 1.14 + 10mm 12mm + 1.52 + 12mm













## F u

u

u tside



## Q u

SZG u ced

1. Isory CCC ISO 9001
2. U K BS 6206
3. E u EN 12150 CE
4. SGCC

u





**Material Storage Area**



**Cutting Machine**



**Edgeworks**



**Drilling Machine**



**Washing Machine**



**Tempering Furnace**



**Merging Room**



**Autoclave**



**LED Lighting Detection**



**Packing & Loading**

□□□□□□□□□□□□□□□□





