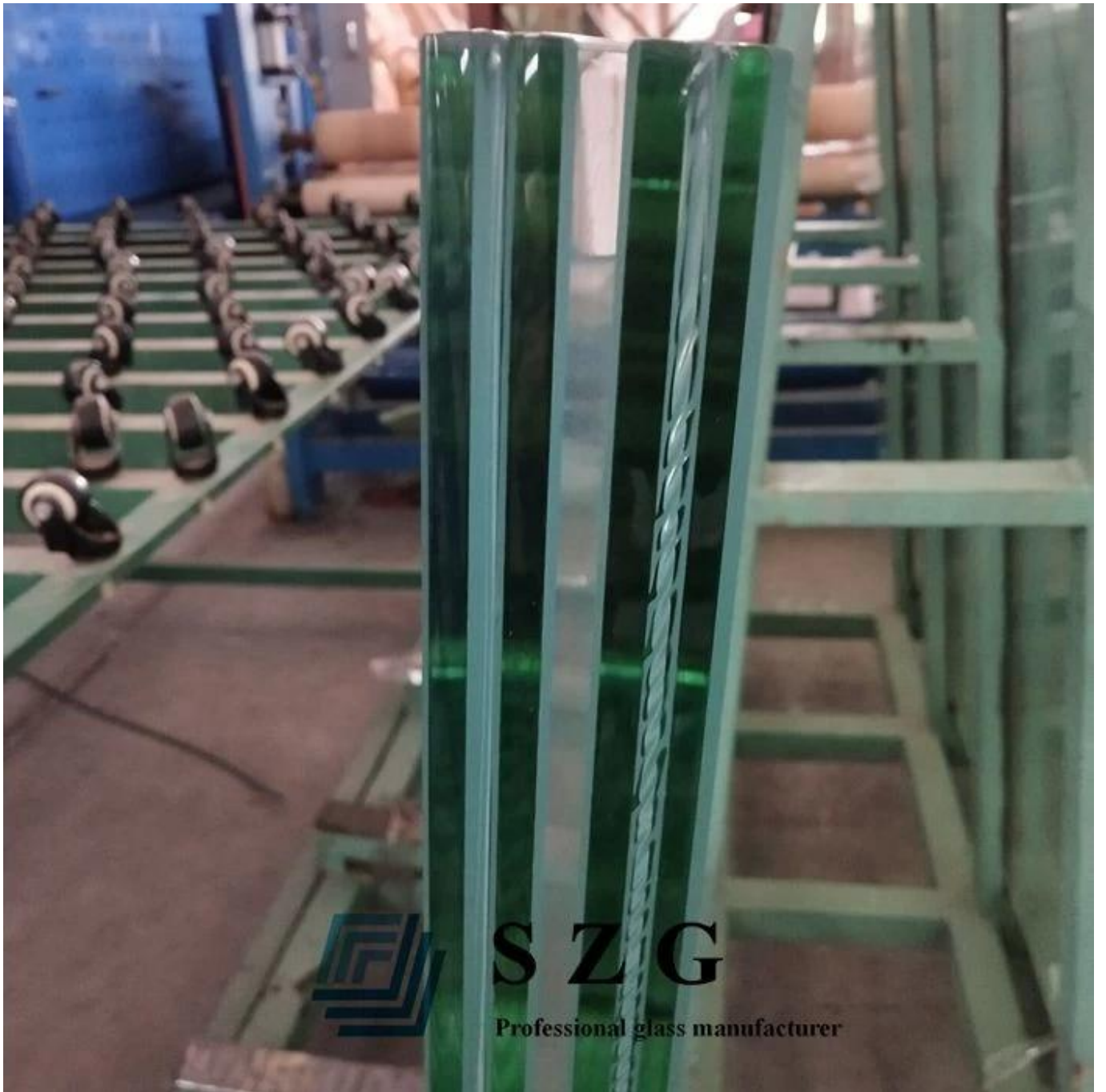
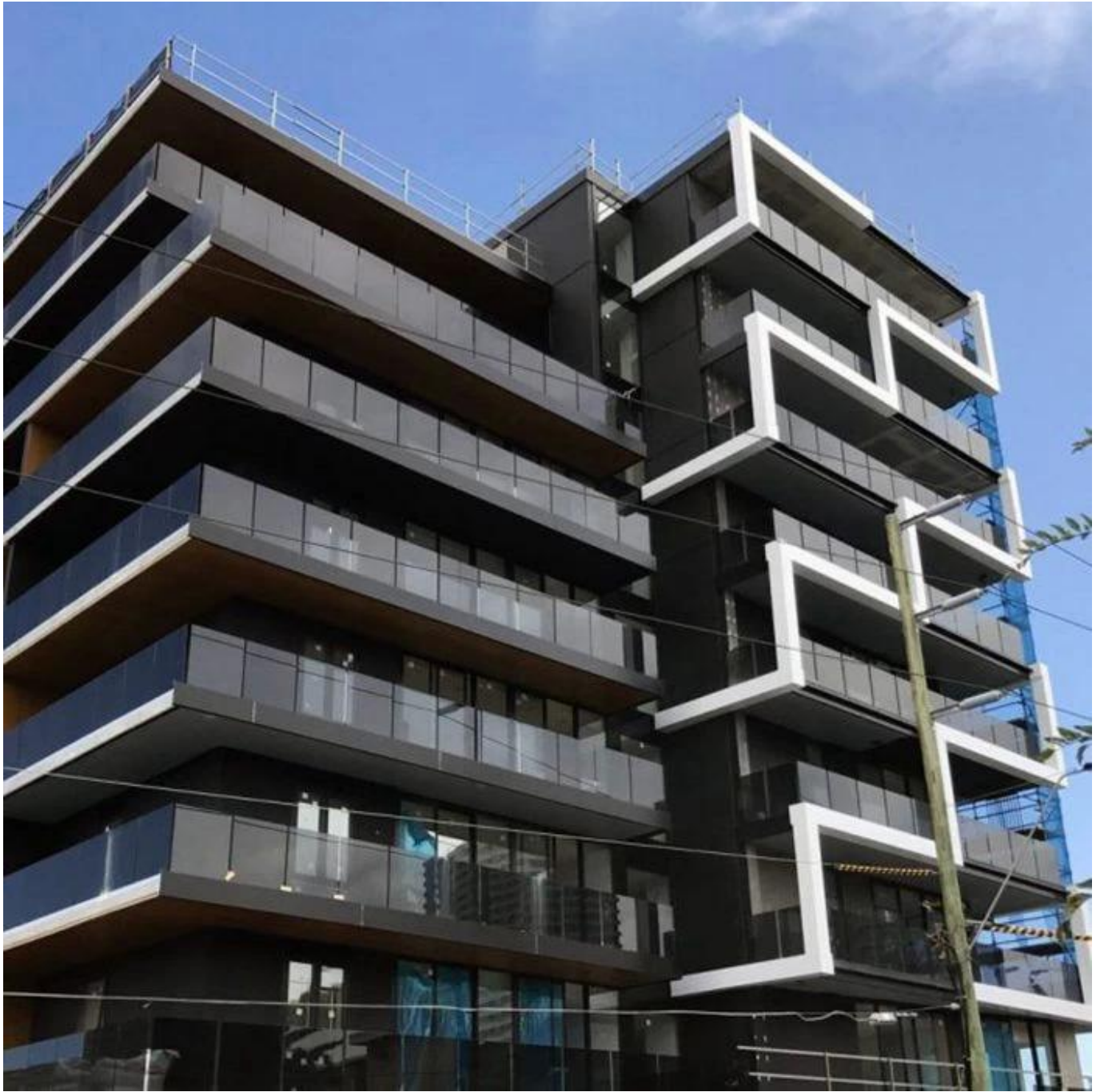


SZG 10mm + 1.52mm SGP + 10mm - SGP

PVB EVA SGP

21.52mm SGP **10mm** SGP

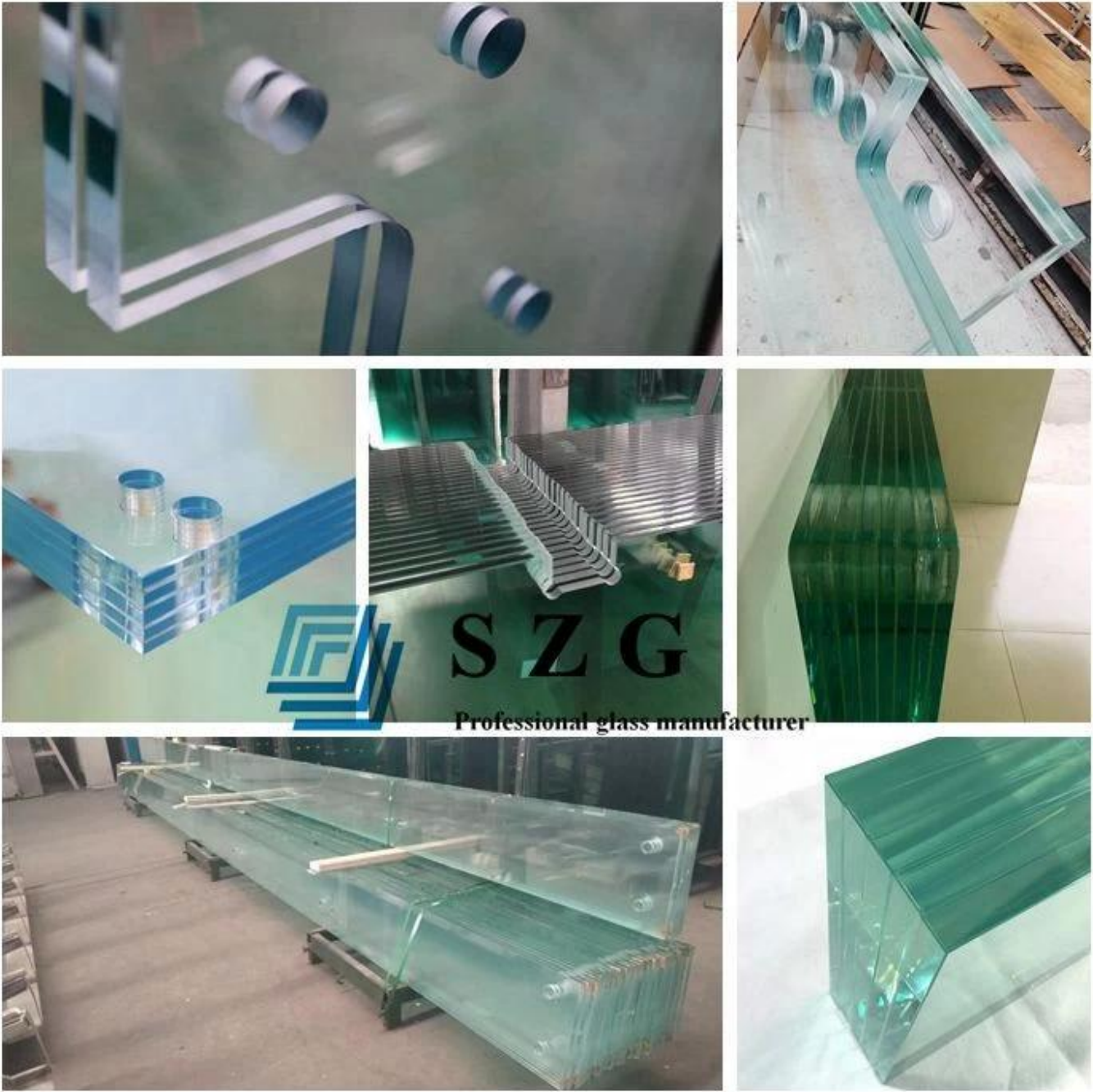






S Z G

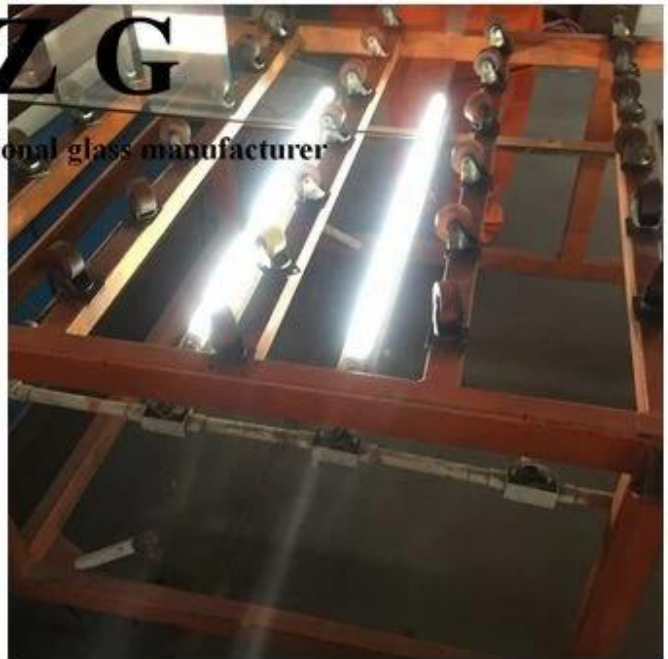
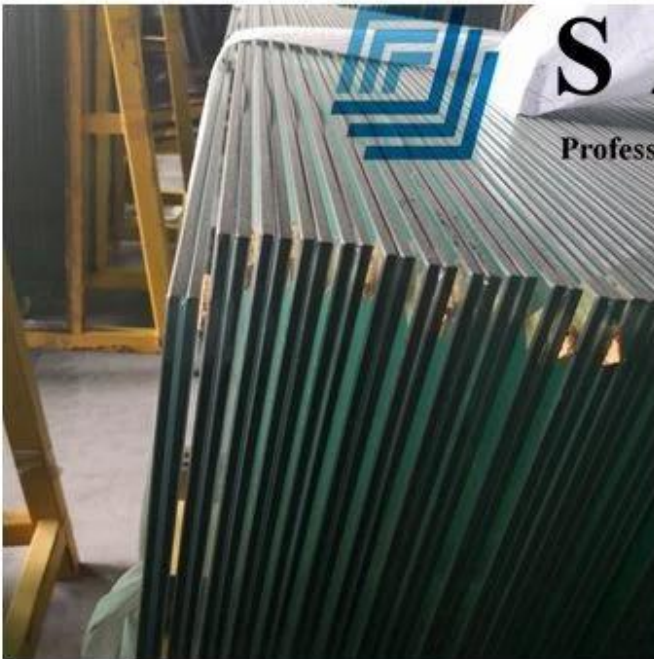
Professional glass manufacturer



□□

1. sgp□□□□□□PVB□□□□□□100□□□□sgp□□□□□□□□□□□□PVB□□□□□□5□□□□
2. SGP□□
3. SGP□□□
4. □□□□□□sgp□□□□□□□□□□□□□□□□□□□□□□□□□□□□□□□□□□□□□□□
5. □□□□sgp□□□

6. ██████████



S Z G
Professional glass manufacturer

SGP ██████████

Material Performance	SGP	PVB
Tensile Strength MPA	34.5	28.1
Tear Strength MJ/m3	50	10-15
Fracture Expansion Rate	400%	275%
Haze Degree	<<2%	<2%
Yellow Index	<1.5	6-12
Index of Refraction	1.5	1.47~1.5
Transmittance 6mm Clear+1.52mm+6mm Clear	89%	89%
UV Resistance Rate 3mm Clear+0.38mm+6mm Clear	99.9%	99.9%
Ignition Point	470°C	410°C
Flame Spread Index	30	60
Combustion Smoke Index	215	350



Professional glass manufacturer
SGP

SGP

SGP
SGP

- 1.
- 2.
- 3.
- 4.

5. 21.52mm SGP

