

SZG 48mm

1.



2.

Glass Floor

1. Glass floor panels shall be made of safety glass.

2. Glass floor panels shall be 24mm thick and shall be able to withstand a load of 15°C over a 5cm diameter.

3. Glass floor panels shall be installed in accordance with the manufacturer's instructions.

Sun Global Glass ISO 9001 certified manufacturer.

1. Glass floor panels shall be made of SGCC USA.

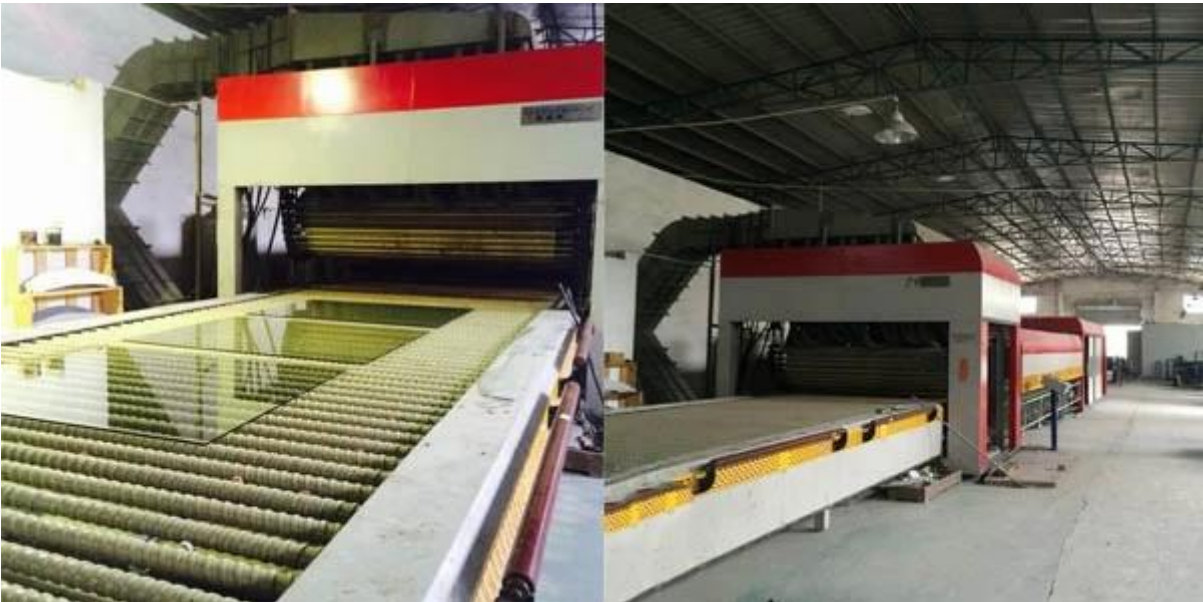
2. Glass floor panels shall be EN 12543 CE certified.

3. Glass floor panels shall be CCC certified.

48mm



□□□□□





□□□□□



