

SGG Ultra Clear Toughened Glass 19MM Thickness- CE/ BS 6206 Standard Quality

19mm ultra clear toughened glass is also called 19mm extra clear tempered glass, 19mm low iron tempered glass, 19mm crystal glass and so on. Because compared to ordinary [19mm clear tempered glass](#), its transparency is much higher. It's produced through the processing of hardening the structure of anneal glass to be made with internal stresses, that makes 19mm ultra clear toughened glass to be 4-5 times stronger than ordinary 19mm ultra clear glass. What's more, it's a kind of safety glass, when it occurs breakage, the glass sheet will become small particles with blunt edges. Compared to anneal glass, it can reduce the injury to people. Because of this feature, toughened glass has been widely used in places particular responsibility, a high risk of breakage or subject to strong sunlight would cause a significant increase in thermal stresses.

Specifications:

Glass type: 19mm ultra clear toughened glass

Other name: 19mm low iron toughened glass, 19mm extra clear tempered glass, 19mm extra clear tempered glass, 19mm crystal tempered glass, etc.

Thickness: 19mm

Thickness range: 4mm 5mm 6mm 8mm 10mm 12mm 15mm 19mm

Glass processing services: grind edge, polished edge, drill holes, round corner, cutout, cut notches, etc.

Color: clear, ultra clear, tinted colors, frosted, printed colors, etc..

Size: Oversize, customized size (minum: 300mm x300mm, maximum: 8000mm)

Features:

- 1.High Transparency: you can enjoy a good view clearly when you look outside through it.
- 2.High Strength: Compared to ordinary 19mm ultra clear float glass, it is about 5 times stronger. It can withstand heavier impacts, load heavier weight and has higher strength.
- 3.High Safety: When the breakage occurred, the tempered glass will become small cubic pieces, thus, it can reduce the injury after being broken.
- 4.Heat Stability: 19mm ultra clear toughened glass can withstand a temperature range of 250°C to 320°C.

Applications:

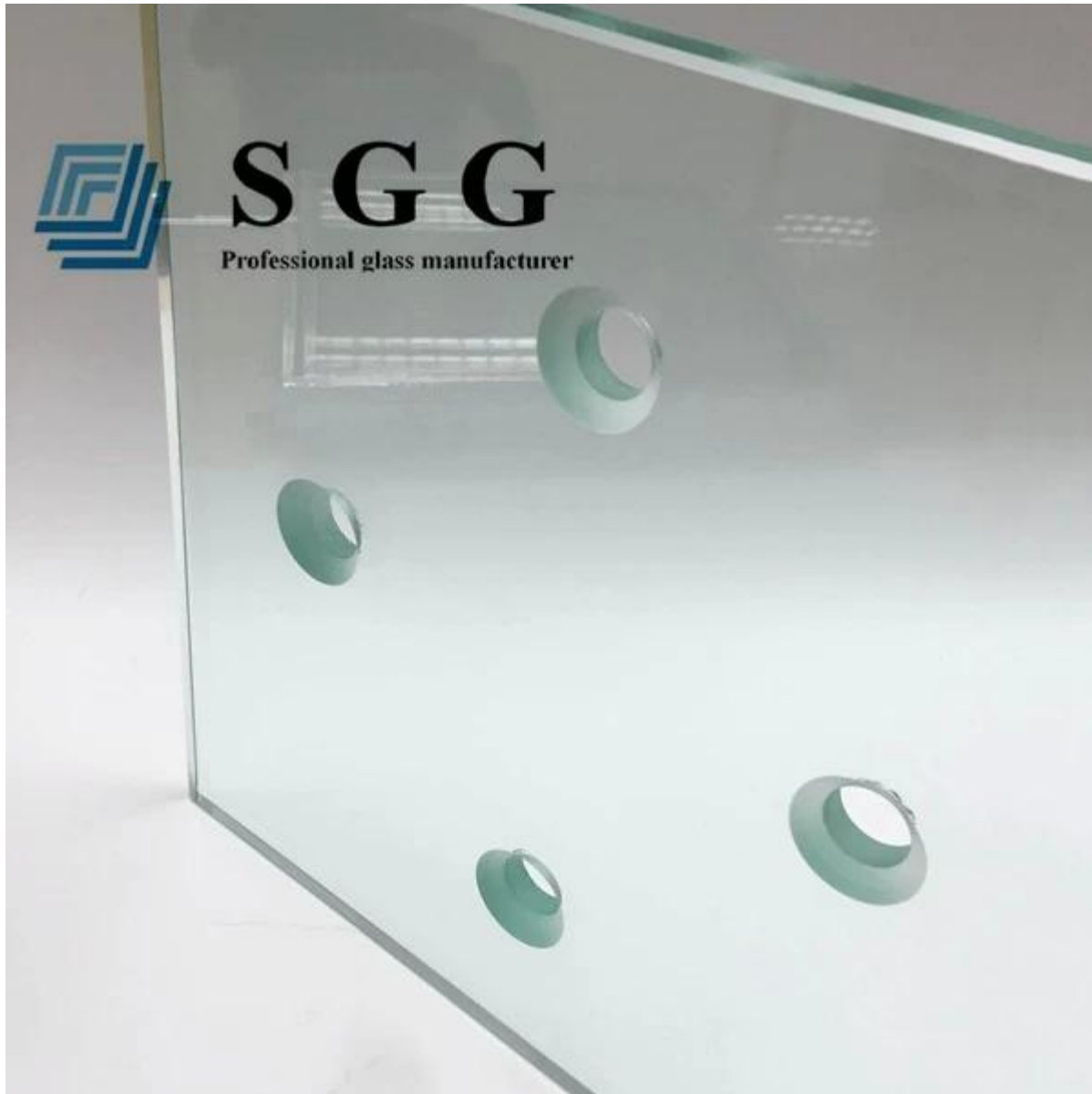
1. Used as table top, table coverings.
2. Used for partition glass walls, railings, balcony breast board, fences, etc.
3. Used as swimming pool fences.
4. Used as door, glass floor.
5. Processed to laminated glass, frosted glass, printing glass for other usages.

Quality:

- 1.In accordance with EN12150 European tempered glass standard
- 2.In accordance with ASTM1048 American Standard
- 3.In accordance with GB 9963-1998 Tempered Glass Standard
- 4.In accordance with GB 17981-1999 Chinese Standard Tempered and Heat-Strengthened Glass
- 5.Pass Chinese Safety Glass Compulsory Certification (CCC), IGCC, CSI.

Product Details:

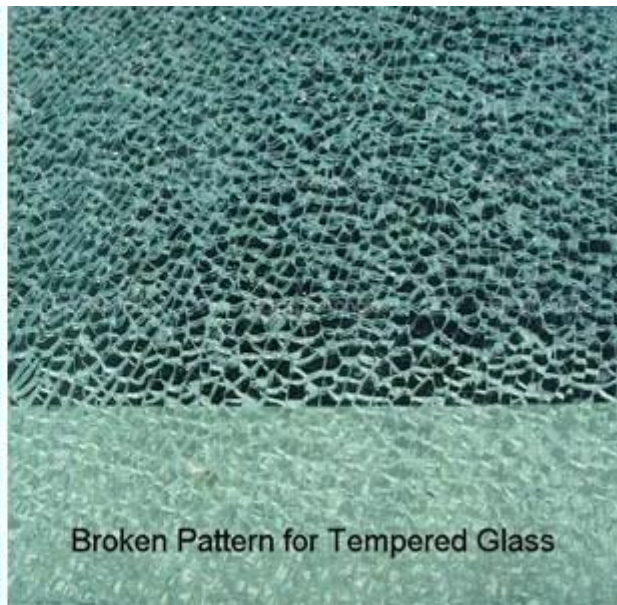
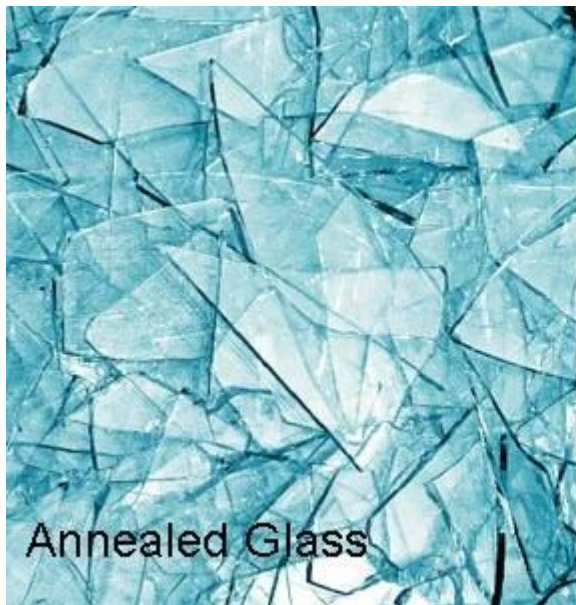
Product pictures of 19mm ultra clear toughened glass:



Differences between [Annealed Glass](#) and [Tempered Glass](#):

1. 19mm ultra clear toughened glass reduces the risk of injury due to its nature of breaking into small, circular pieces instead of sharp, jagged shards.

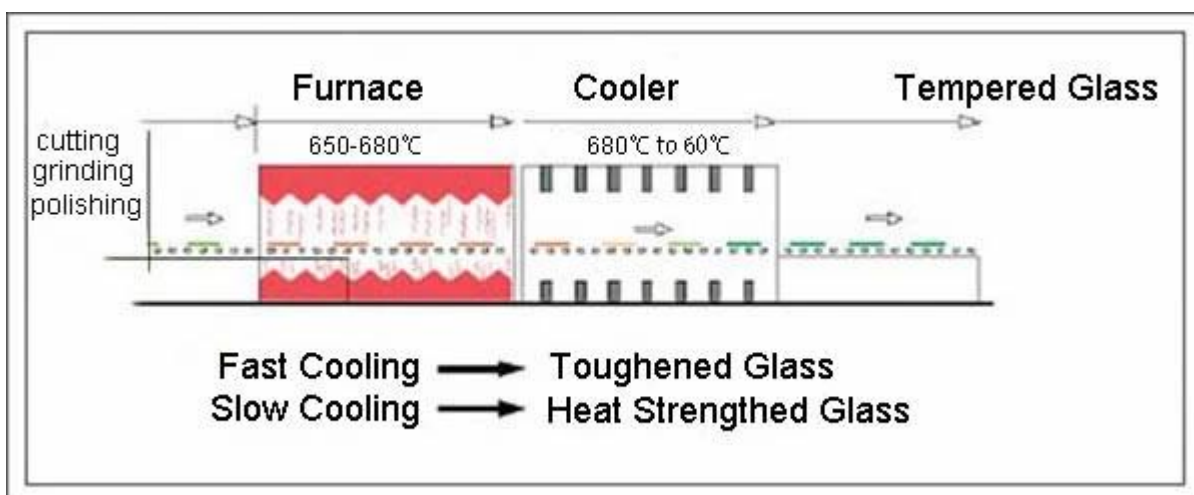
2. 19mm ultra clear toughened glass windows is ease of clean-up if they ever do break.
3. 19mm ultra clear toughened glass is 5 times strength than 19mm ultra clear glass.

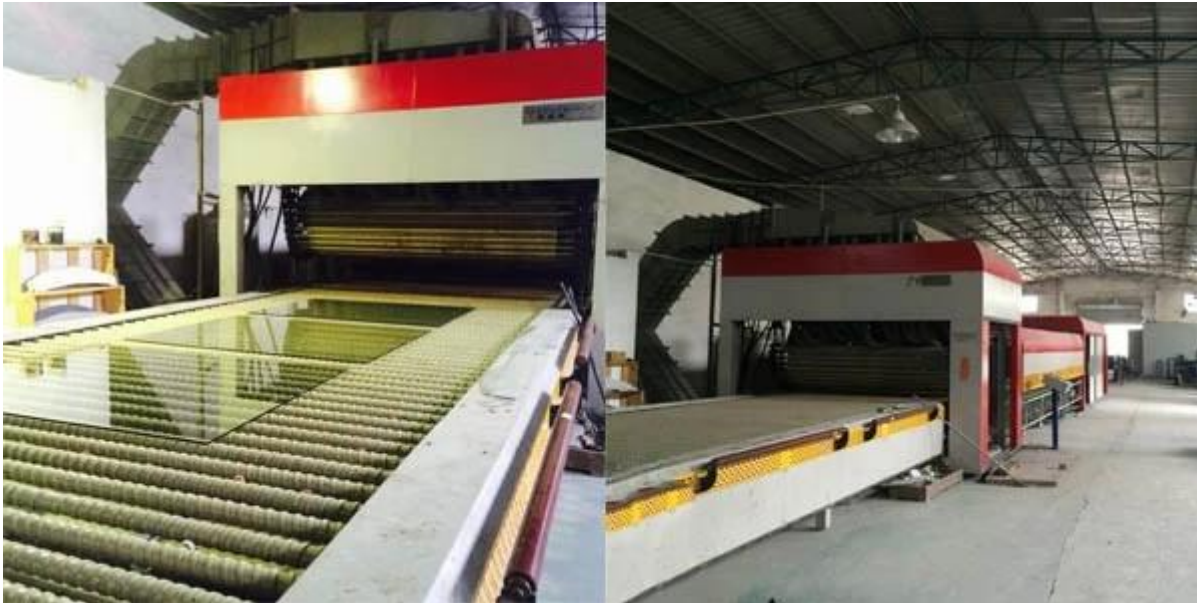


Holes and Cut outs:



Production Line:

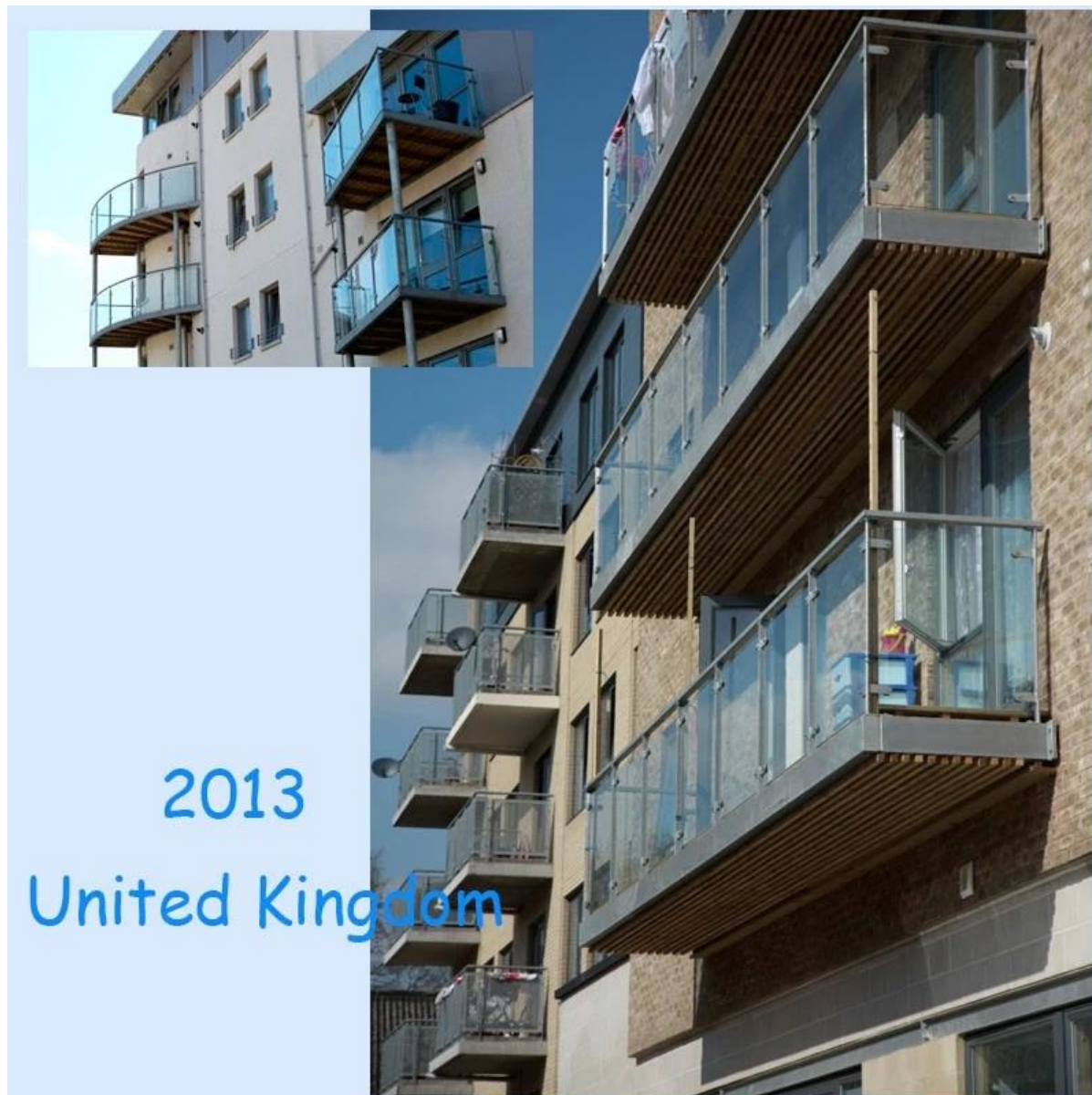




Package and Loading:



Our Projects:



We promise that you will receive 19mm ultra clear toughened glass with high quality and safety condition from us.