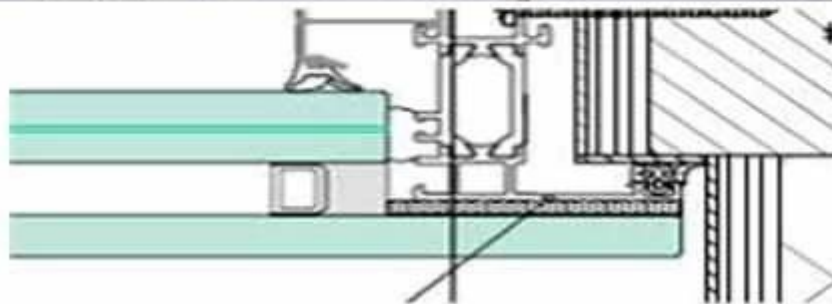


## **48.52mm Ultra Clear Insulated Glass, perfect glass rib, perfect engineered glass!**

**Insulated Glass** also referred as DGU (Double Glazing Unit), IGU (Insulated Glass Unit), Double Glazing Glass, Insulating Glass, etc. Proper adhesion and sealing of Insulating Glass is a critical part of window and door, and make them have excellent durability and energy saving performance.

In this section 48.52mm Low Iron Tempered Insulated Glass' construction is **12mm Super Clear Tempered Glass** HST+15mm air space/ 15mm Argon Space+**21.52mm ESG VSG**, They can bespoke any sizes and shapes, Sun global glass is fully equipped with AutoCAD, we can use customer DXF drawing to process the glass, alternatively we can take the information required from your template or sketch and create a DXF.



### **Specification:**

1. Glass Thickness: 48.52mm
2. Glass substrate: low iron tempered glass
3. Glass size& shape: besopke glass size and shape
4. Visibale light transmittance: 85%
5. SC value: 1.58W/□·K
6. MOQ: 500 m2

7.Packing: brand new, durable plywood case with foam protection inside.

### **Insulated Hollow Glass Advantage:**

1. Sun Global Glass Insulated Glass Unit have primary and secondary sealing of multiple pieces of glass to locks out moisture and adds structural stability for insulated glass panels.
2. Sun Global Glass Brand Double Glazing Hollow Glass offer an accurate desiccant application removes any moisture trapped in the gas space between the glass panes preventing condensation while improving insulating performance. Thermal transmittance or U-value is also reduced by spacers or lineals that utilize structural foam materials as part of the window frame construction process.
3. Consistent heat control to address ambient temperatures, viscosities and cure properties of a fast-bonding material or a two component (2K) sealant is a must for a consistent application. Sun Global Glass equipment designed and built to provide accurate, on-ratio mixing and a consistent flow rate of adhesive sealant materials to deliver superior sealing applications and provide highly structural thermal barriers.