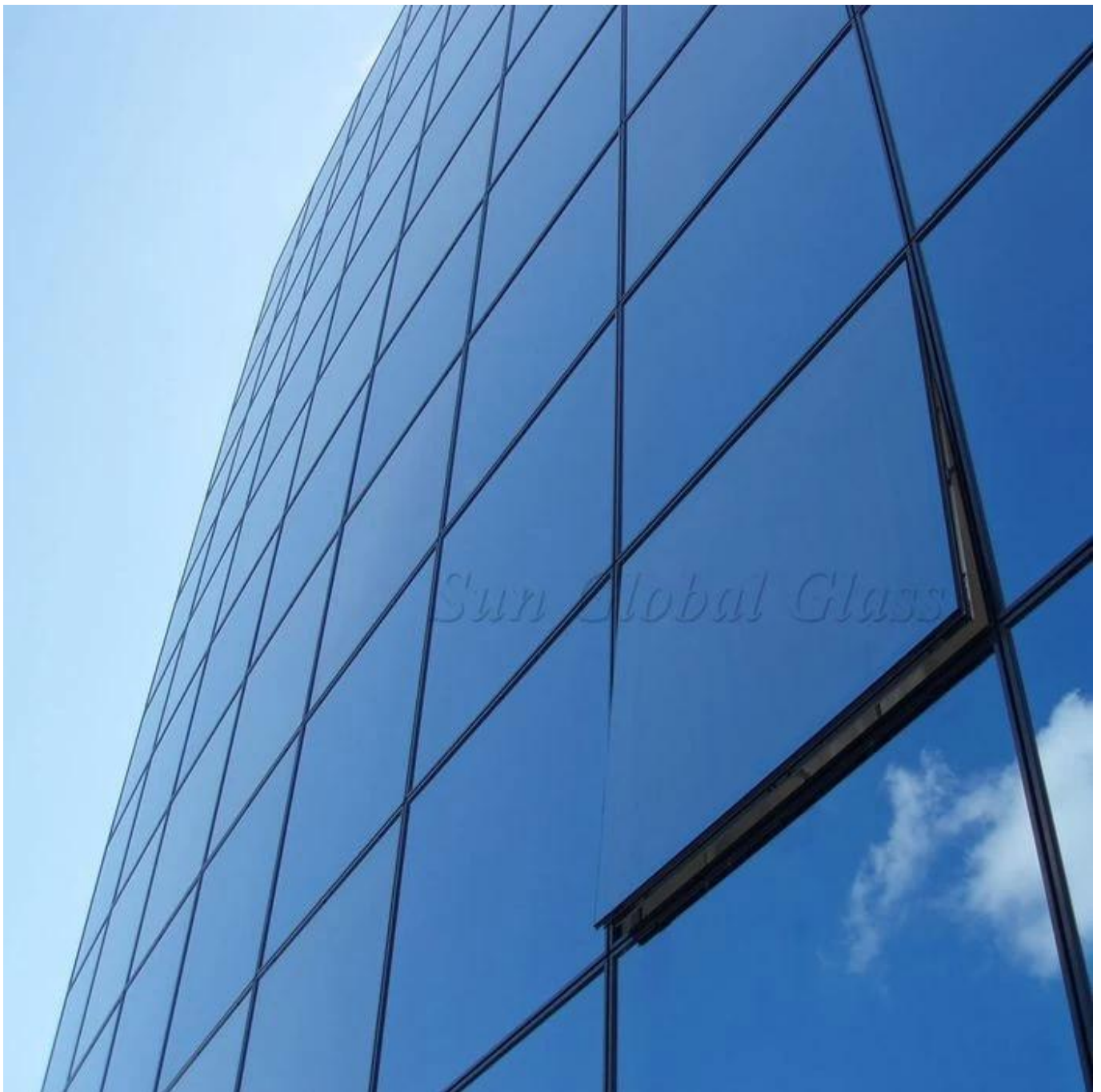


## 6mm+9a+6mm ford blue IGU glass window manufacturers - best window glass suppliers in China

SZG produce three kinds glass for window glass. First type is free cut non tempered annealed glass, include clear float glass, reflective glass and tinted glass. Second type is [tempered glass](#), include clear tempered glass, low e tempered glass, reflective tempered glass, tinted toughened glass. Third type is double glass window type, mainly are [insulated glass](#). Window glass can divide into non energy saving type and energy saving window glass.



Sun Global Glass produce good quality window glass exact same with customers drawings. 21mm window

glass is to produce 6mm+9A+6mm insulated glass into cutting sizes based on customers' demand and make into window glass.



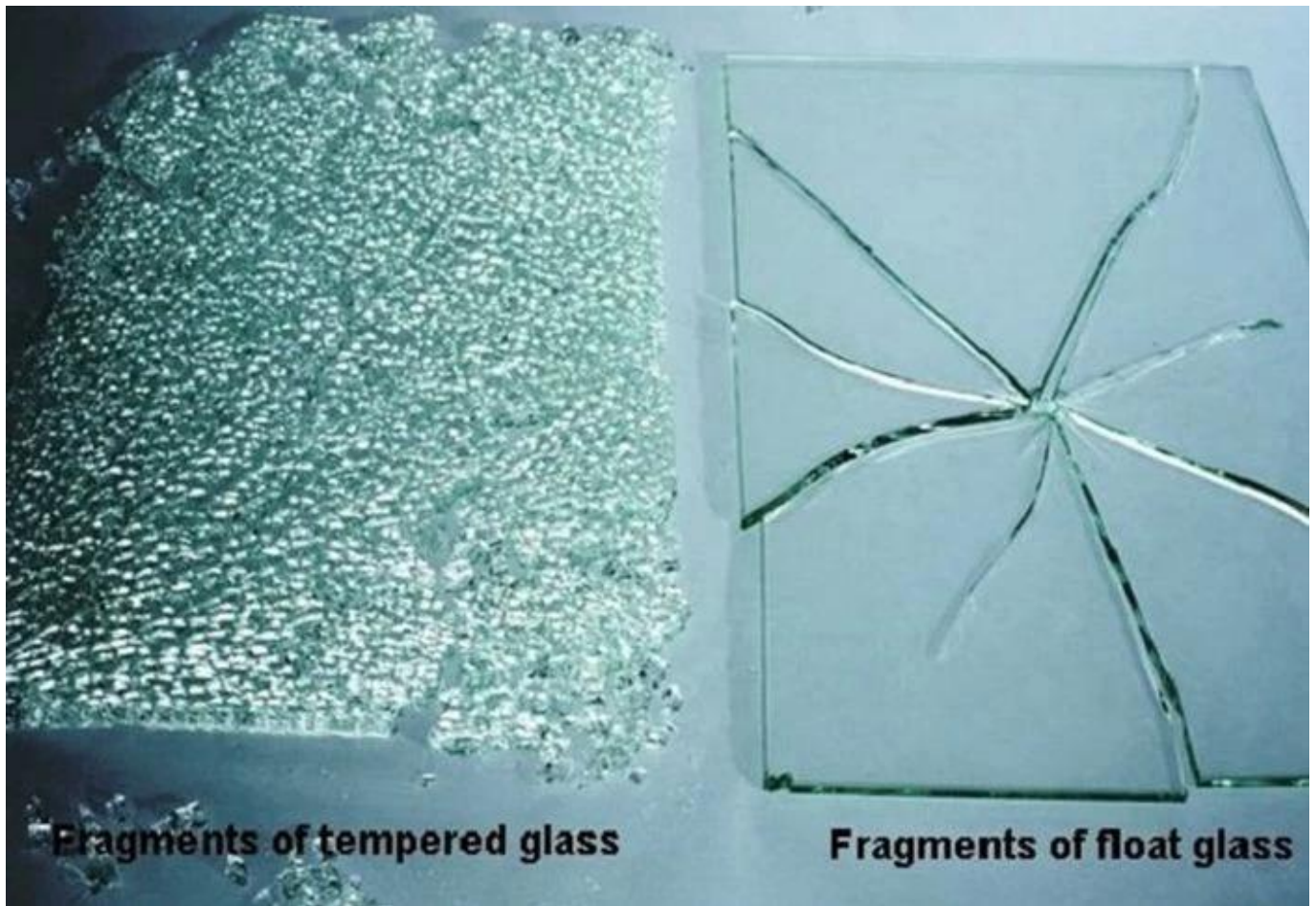
### **Glass composition of window glass:**

1. Free-cut non tempered annealed glass

Glass Type: Clear float glass, Reflective glass, Tinted glass

Glass Thickness: 4mm 5mm 6mm

Features: Price is relatively cheap, heat resistance and impact resistance are not enough



## 2. Single toughened glass

Glass Type: Clear tempered glass, Reflective tempered glass, Tinted tempered glass, Low e tempered glass

Glass Thickness: 5mm 6mm 8mm 10mm

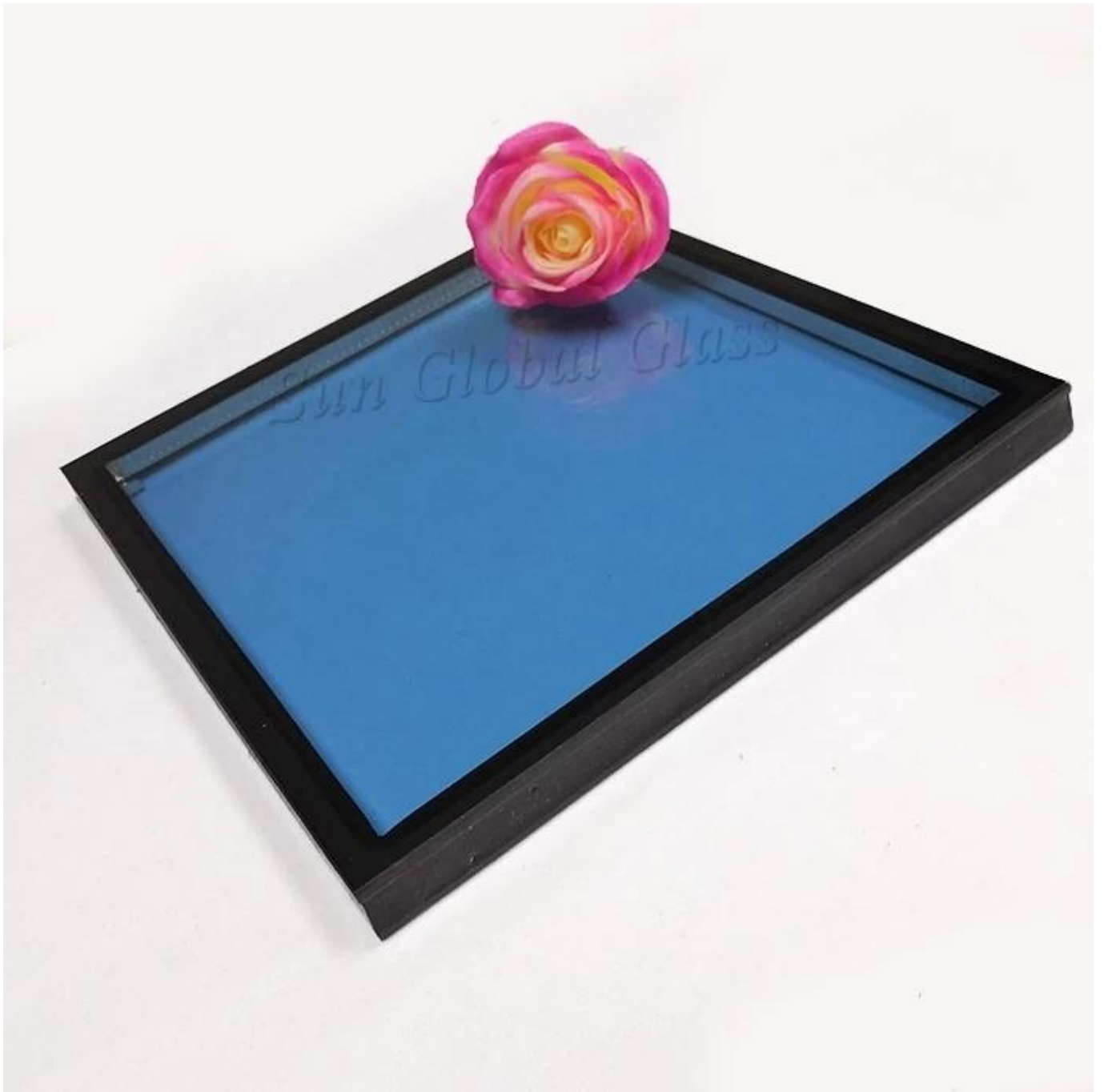
Features: safety glass, will not harm human

## 3. Double glass:

Glass Type: Insulated glass

Glass Thickness: 5mm+5mm, 6mm+6mm, 8mm+8mm, 10mm+10mm

Features: Sound insulation and energy saving effect, use mostly in modern building



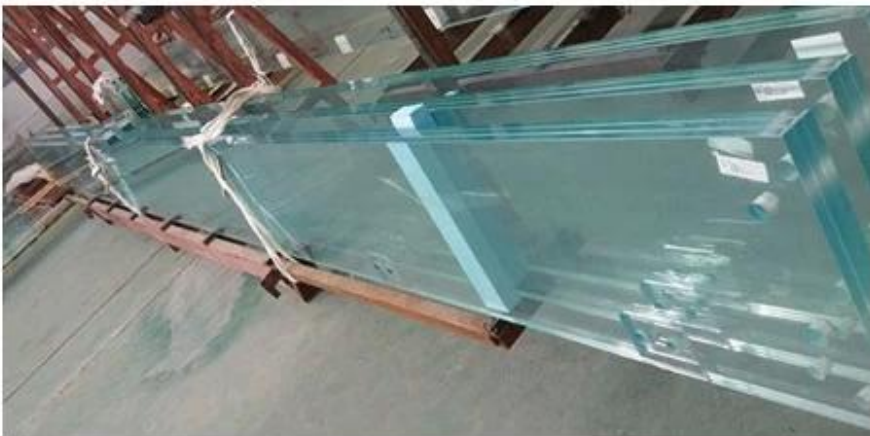
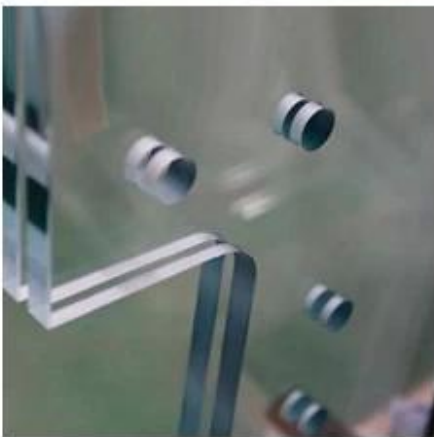
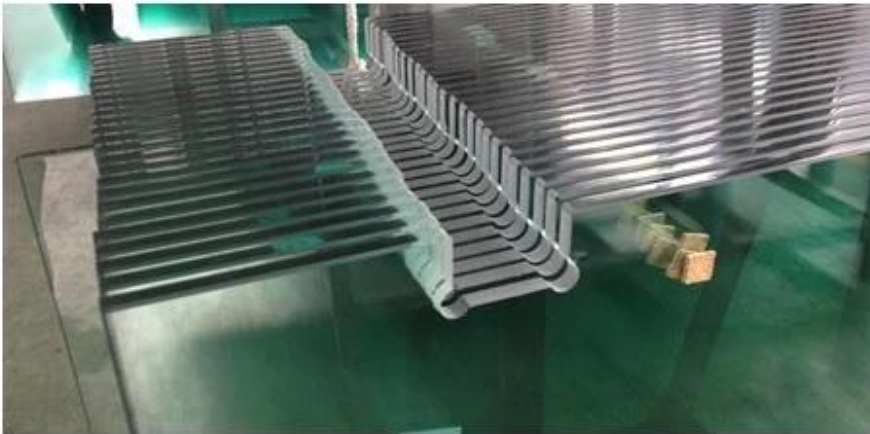
**Specification:**

Glass Type: Single glass and double glass

Thickness: 4mm 5mm 6mm 8mm 10mm etc

Max size: 3300x13000mm, customized sizes based on drawing

Process details: edges, and other process will be exact same as clients drawing.



### Quality control:

Sun Global Glass provide window glass comply with following standards:

1. 21mm blue insulated glass window meet BS 6206 UK safety glass standard.

2. 21mm blue insulated glass window meet EN 12150 CE European safety glass standard.

3. 21mm blue insulated glass window meet Chinese Safety Glass Compulsory Certification (CCC)

4. 21mm blue insulated glass window meet Chinese Insulated Glass standard GB11944.



**Verification of Conformity**  
No. 1870421200000

**Glass in building - Laminated glass and laminated safety glass -  
Evaluation of conformity / Product standard  
EN 14449:2005**  
(This standard is covered by the registered patent 1000000000000)

The product in the certificate, laminated safety glass manufactured by SHENZHEN SUN GLOBAL GLASS CO., LTD. was submitted for the manufacturer's Performance Testing according to the above-mentioned European standard. The results obtained, together with the applicable requirements, the test results and the content of the certificate of conformity, are stated in the main document. This certificate is valid as long as the certificate and glass in the above-mentioned standard are not subject to any change.

**Company:** Name: SHENZHEN SUN GLOBAL GLASS CO., LTD.  
Address: #1 Qianghua Road, Shuangzhen, Shenzhen, Guangdong  
City: China

**Manufacturer:** Name: SHENZHEN SUN GLOBAL GLASS CO., LTD.  
Address: #1 Qianghua Road, Shuangzhen, Shenzhen, Guangdong  
City: China

**Product:** Laminated Safety Glass  
Model: 6mm+6mm+0.76mm+6mm+6mm+0.76mm+6mm  
Glass+PVB+Glass  
Product: 6mm+6mm+0.76mm+6mm+6mm+0.76mm+6mm  
Product: 6mm+6mm+0.76mm+6mm+6mm+0.76mm+6mm

Shenzhen, 27 October 2017

  
Responsible Manager





**QUALITY MANAGEMENT SYSTEM  
CERTIFICATE**

Certificate No.: 1870421200000

We hereby certify that  
**Shenzhen Sun Global Glass Co., Ltd**  
located at: **Room 27, Floor 1, Qianghua Road, Shuangzhen, Guangdong, China**  
has been awarded this certificate for compliance with the standard  
**ISO 9001:2015**

The Quality Management System Applies to the following area:  
**Rules of Building Glass (Heat Glass, Tempered Glass, Laminated Glass, Insulated Glass, Mirror Glass and other Building Glass)**

Date of Issue: Nov 09, 2016      Date of Validity: 31 Oct 2019

Surveillance Audit (The first time)	Surveillance Audit (The second time)	Surveillance Audit (The third time)

(The quality management system is subject to yearly surveillance audit under the period of validity the certificate is valid only, which must together with an acceptance record of surveillance audit issued by SGS.)

Signed by: 

This certificate and its relevant information can access to the website: [www.sgs.com.cn](http://www.sgs.com.cn)

SHENZHEN SUN GLOBAL GLASS CO., LTD. (CHINA)  
Address: #1, Qianghua Road, Room 27, Shuangzhen, Guangdong, China, Shenzhen

Certificate No.: 1870421200000

**EC Declaration of CPD Conformity**

The following product has been tested by LUTBER Technology Laboratories Ltd. with the being elements and found in conformity with the CE Conformity Directive of 90/269/EEC. It is possible to use CE marking to demonstrate the conformity with the CPD Directive.

**Report No.:** 1870421200000

**Applicant:** SHENZHEN SUN GLOBAL GLASS CO., LTD.  
NO. 27 FLOOR 1 QIANGHUA ROAD SHUANGZHEN SHENZHEN GUANGDONG CHINA

**Manufacturer:** SHENZHEN SUN GLOBAL GLASS CO., LTD.  
NO. 27 FLOOR 1 QIANGHUA ROAD SHUANGZHEN SHENZHEN GUANGDONG CHINA

**Product:** TEMPERED GLASS

**Model No.:** Sun, Sun, Sun, Sun, Sun, Sun, Sun

**Trade Mark:** N/A

**Test Standard:** EN 12150-2:2004

The relevant test results show that the product complies with the essential requirements in the above-mentioned standard. The applicant is authorized to use the certificate in compliance with the CE Declaration of CPD conformity according to the Directive.

The certificate of conformity is based on a single evaluation of the submitted samples of the above-mentioned product. It does not imply an assessment of the whole production and other elements (Directive have to be observed).

LUTBER Technology Laboratories Ltd. Test Facility, Phoenix, UK  
No. 10, The Parkway, Phoenix, UK  
Tel: +44 (0)1273 830000

**SGS TEST REPORT**

No. 1870421200000  
Page 1 of 1

Reference No.: 1870421200000  
Address: #1 Qianghua Road, Shuangzhen, Shenzhen, Guangdong, China

The following product has been tested by SGS according to the following standard:  
Standard: EN 12150-2:2004  
Product: Tempered Glass  
Model: Sun, Sun, Sun, Sun, Sun, Sun, Sun

  
Responsible Manager



**SGS TEST REPORT**

No. 1870421200000  
Page 1 of 1

Reference No.: 1870421200000  
Address: #1 Qianghua Road, Shuangzhen, Shenzhen, Guangdong, China

The following product has been tested by SGS according to the following standard:  
Standard: EN 12150-2:2004  
Product: Tempered Glass  
Model: Sun, Sun, Sun, Sun, Sun, Sun, Sun

  
Responsible Manager



**SGS TEST REPORT**

No. 1870421200000  
Page 1 of 1

Reference No.: 1870421200000  
Address: #1 Qianghua Road, Shuangzhen, Shenzhen, Guangdong, China

The following product has been tested by SGS according to the following standard:  
Standard: EN 12150-2:2004  
Product: Tempered Glass  
Model: Sun, Sun, Sun, Sun, Sun, Sun, Sun

  
Responsible Manager



**DECLARATION OF CONFORMITY**

Certificate No.: 1870421200000

**EC Declaration of CPD Conformity**

The following product has been tested by LUTBER Technology Laboratories Ltd. with the being elements and found in conformity with the CE Conformity Directive of 90/269/EEC. It is possible to use CE marking to demonstrate the conformity with the CPD Directive.

**Report No.:** 1870421200000

**Applicant:** SHENZHEN SUN GLOBAL GLASS CO., LTD.  
NO. 27 FLOOR 1 QIANGHUA ROAD SHUANGZHEN SHENZHEN GUANGDONG CHINA

**Manufacturer:** SHENZHEN SUN GLOBAL GLASS CO., LTD.  
NO. 27 FLOOR 1 QIANGHUA ROAD SHUANGZHEN SHENZHEN GUANGDONG CHINA

**Product:** TEMPERED GLASS

**Model No.:** Sun, Sun, Sun, Sun, Sun, Sun, Sun

**Trade Mark:** N/A

**Test Standard:** EN 12150-2:2004

The relevant test results show that the product complies with the essential requirements in the above-mentioned standard. The applicant is authorized to use the certificate in compliance with the CE Declaration of CPD conformity according to the Directive.

LUTBER Technology Laboratories Ltd. Test Facility, Phoenix, UK  
No. 10, The Parkway, Phoenix, UK  
Tel: +44 (0)1273 830000

**SGS TEST REPORT**

No. 1870421200000  
Page 1 of 1

Reference No.: 1870421200000  
Address: #1 Qianghua Road, Shuangzhen, Shenzhen, Guangdong, China

The following product has been tested by SGS according to the following standard:  
Standard: EN 12150-2:2004  
Product: Tempered Glass  
Model: Sun, Sun, Sun, Sun, Sun, Sun, Sun

  
Responsible Manager



Certificate No.: DP10GP14000



**DuPont Glass Laminating Solutions**

*is pleased to confirm that the company:*

**SHENZHEN SUN GLOBAL GLASS CO., Ltd**

*has successfully passed the qualification process of SentryGlas® on May, 2014.*

*This certificate is valid until the date shown in the below table as long as your manufacturing process for laminated safety glass remains unchanged. Renewal is subject to validation of newly supplied laminates.*

Date: 2014-05-29      By DuPont: 

VALIDITY	VALIDITY	VALIDITY	VALIDITY	VALIDITY	VALIDITY	VALIDITY	VALIDITY
2014.5.29	2014.5.29	2014.5.29	2014.5.29	2014.5.29	2014.5.29	2014.5.29	2014.5.29

In authorizing the certificate, DuPont Technology Co., Ltd. does not assume any liability for the responsibility of the signatory company, which is the sole party responsible for the correctness of the product's conformity with applicable laws, regulations, rules and the certificate's "expiration date".