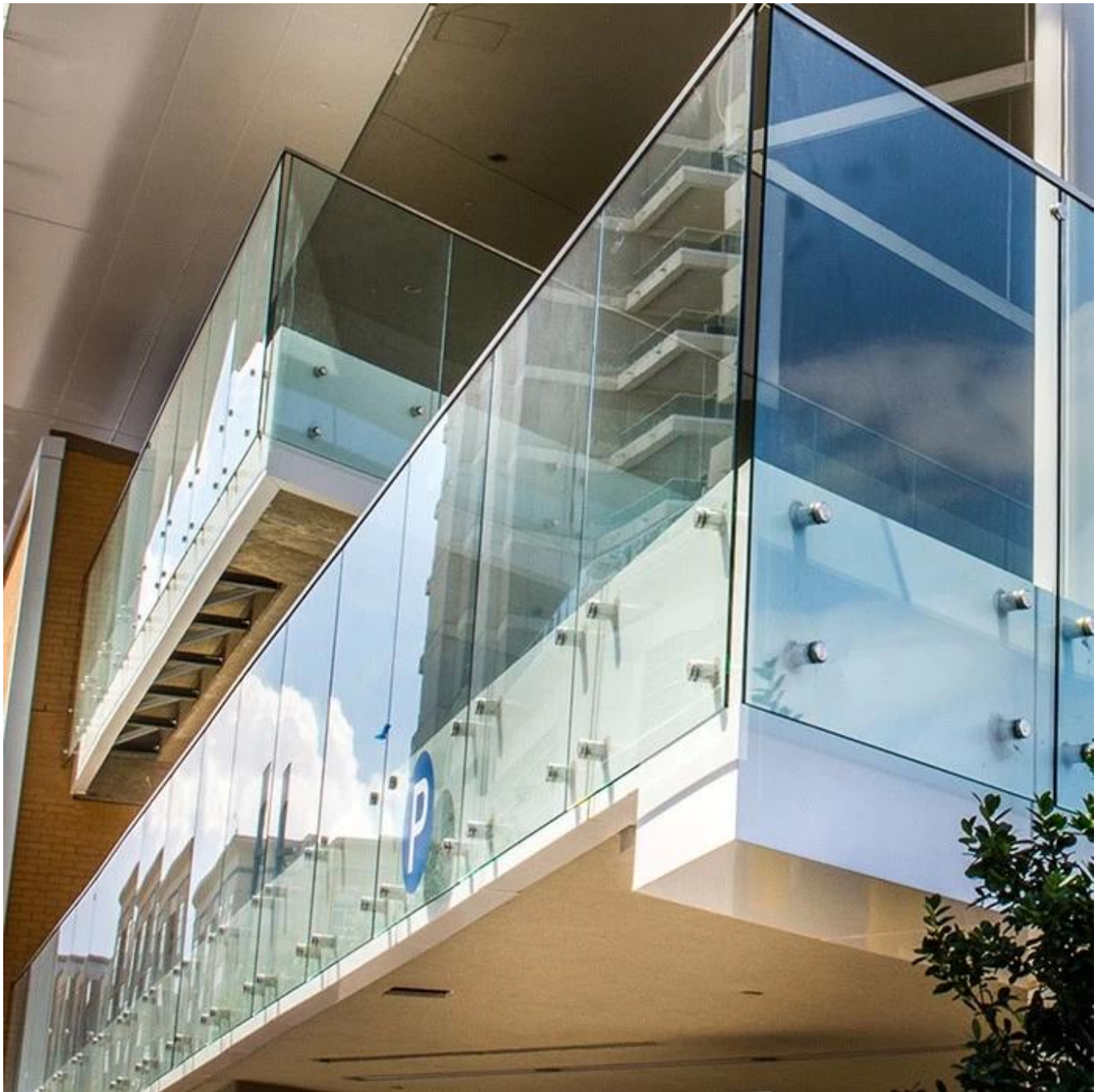


## Standoff Glass Balcony Railing System

Glass	Tempered Glass	8 mm, 10 mm, 12 mm, 15 mm	Clear, tinted, frosted, silk screen printed etc.
	Laminated Glass	6+6mm, 8+8mm	
Standoff	SS304/306	38mm diameter	Brushed/polish
Handrail top	Aluminium, SS304/306	Round	Brushed/polish/satin
		Square	



## Glass Standoff Railing System



two pairs of standoff



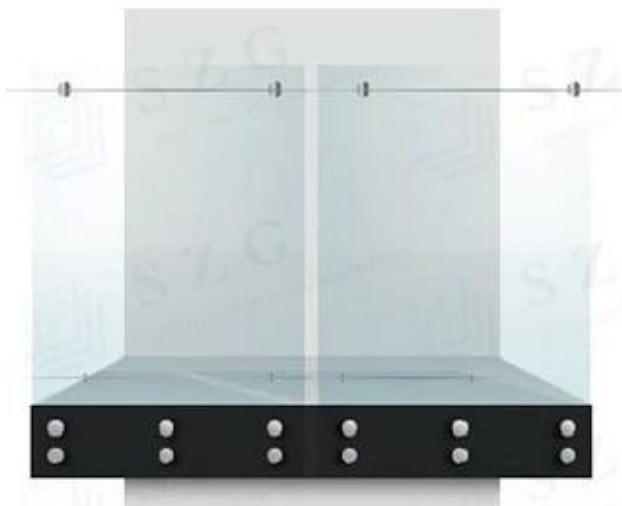
two pairs of standoff and handrail



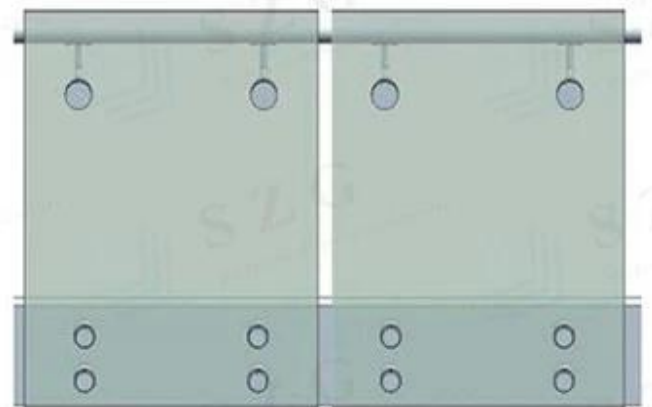
three pairs of standoff



three pairs of standoff and handrail



three pairs of standoff and bracket rail

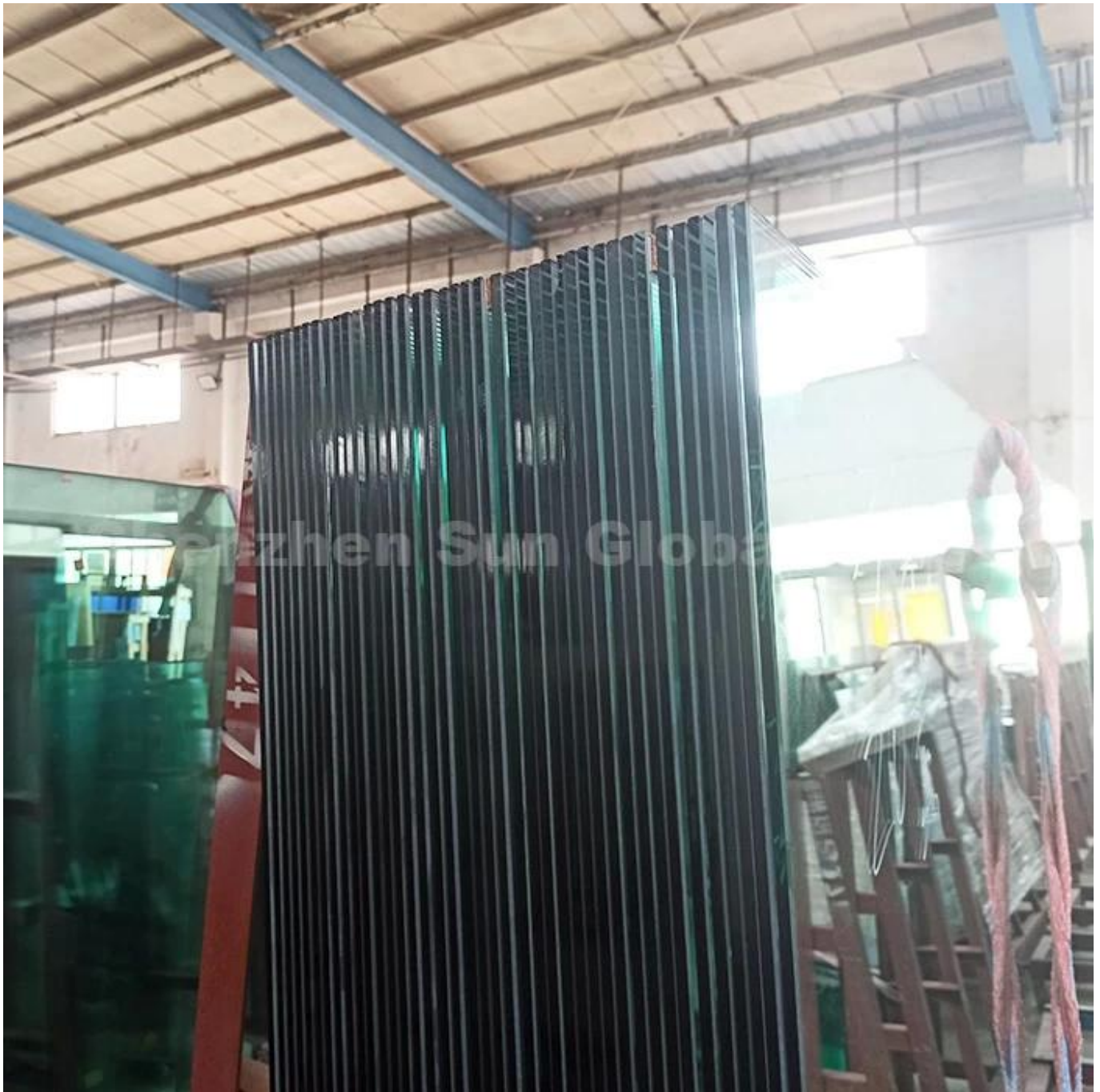


two pairs of standoffs and handrail

## Tempered Glass for Balcony Railing

Tempered glass is a finalized product. Once the glass has been tempered, it can no longer be altered. Depending on the intended use of the final product, first the glass would be cut, then polished. Lastly, any holes or notches would be drilled into the glass. After all of the fabrication was complete, the glass would be run through a tempering oven and the glass baked at anywhere between 800 and 1400 degrees, depending on its thickness.

There are a couple reasons to temper glass. One is to strengthen the glass, after being tempered the glass becomes very strong on its face, making it much harder to break. The other reason is safety. When or if the glass does break, instead of breaking into large shards of glass that you would normally see, it breaks into many smaller pieces. The smaller pieces are still very sharp.



## **Laminated Glass for Balcony Railing**

Laminated glass is composed of two or more glass panels that are joined together by a layer of either



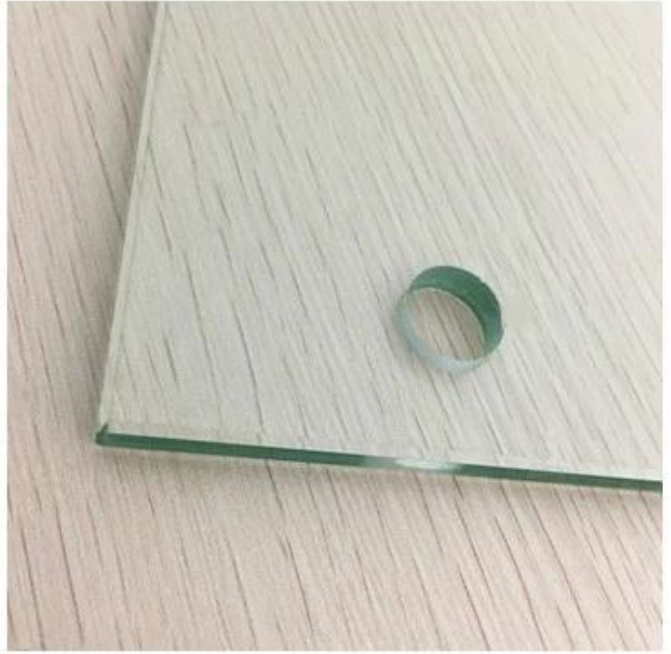
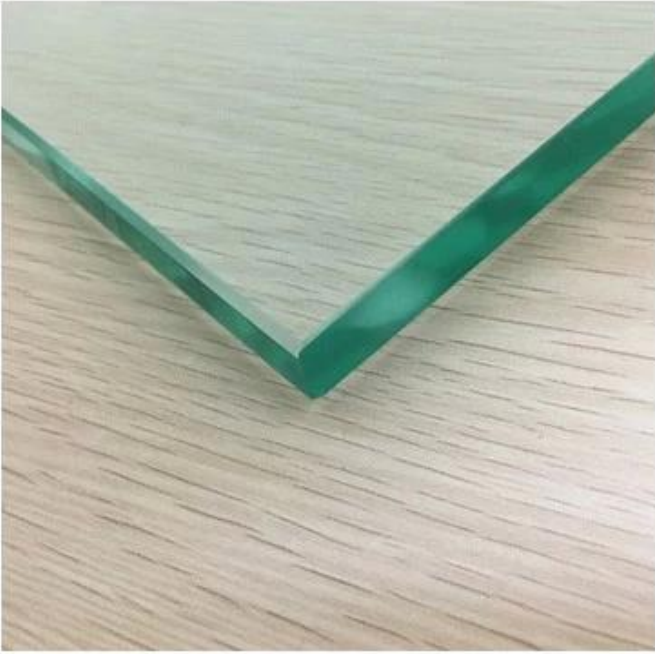
plastic or polyvinyl butyal (PVB). This essentially forms a glass sandwich, with the glass nestled between the two outside layers. Laminated glass can block up to 97% of UV radiation, making it ideal for rooms in your home that get a lot of sun.

Laminated glass is an even stronger and resilient piece of glass we install in our skylights. When impacted by something, the glass cracks, but does not break. The glass is held together by the acrylic inner layer, which means the glass fragments will not fall down and hurt people.



## Glass Processing

For standoff glass railing system, the glass is need polish edges and drill holes processing. Polishing process is to prevent the risk of hurting caused by sharp edges, and the drilling process is to fixed the standoff and glass on the wall. SZG can provide you these processing of glass to convenient for your installation of balcony railing.



**Standoff Wall Mounted for Railing System**











# Handrail Top for Railing System



handrail fitting series  
complete solutions



**180° Straight Joiner**



**90° Corner Joiner**



**Wall Mount Bracket**



**End Cap**



**Horizontal Adjustable**

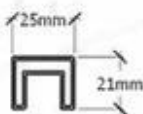


**Vertical Adjustable**

## S. S handrail



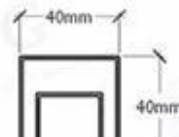
Dia: 25mm



25\*21mm

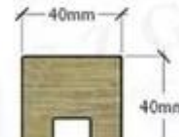


Dia: 42mm



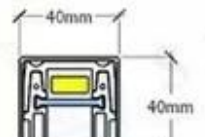
40\*40mm

## wood handrail



40\*40mm

## Alu handrail



40\*40mm

Welcome to send us inquiry with your detail requirement and question.