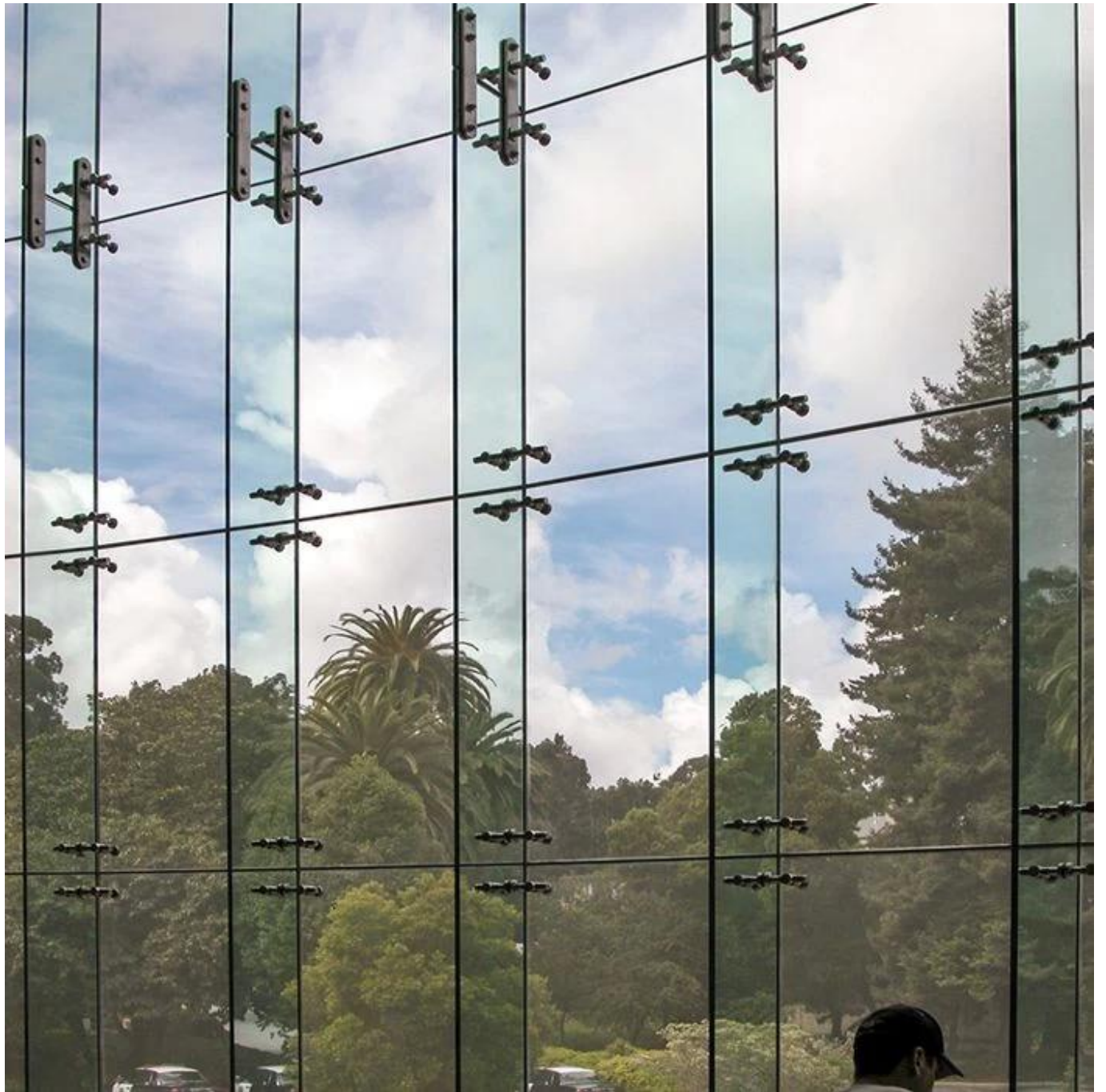


Aletas de vidro laminado SZG 31.52mm - Melhor fábrica de vidro para processamento de vidro arquitetônico na China

As aletas de vidro são a forma mais antiga de fachada de vidro estrutural, os elementos mais comumente usados são as aletas de vidro, quando se trata de estruturas totalmente de vidro. Esses componentes de construção utilizam todo o potencial do vidro como material estrutural e, ao mesmo tempo, produzem máxima transparência e uma visão aberta sem obstruções, utilizando aletas de vidro ajustadas perpendicularmente ao painel de vidro em cada linha vertical da grade de vidro. As aletas de vidro laminado de 31,52 mm são feitas de [Vidro laminado de 31,52 mm](#).



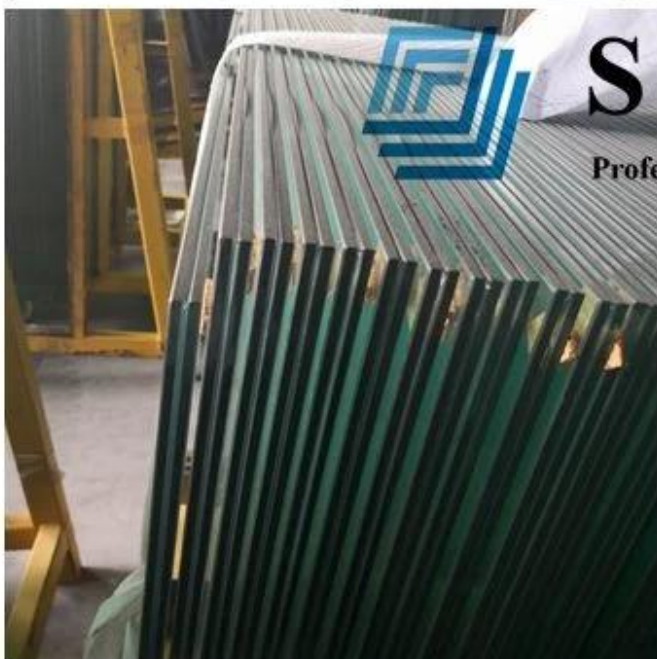




Funções das aletas de vidro:

1. Paredes de vidro estruturais completas ou vidro, todas com aletas de vidro, são feitas quase 100% com aletas de vidro estruturais.
2. As aletas de vidro são consideradas as estruturas de "luz" mais transparentes, invisíveis aos olhos, porque essas estruturas não possuem nenhuma subestrutura de aço ou concreto e completamente sem moldura.

3. A subestrutura feita por aletas de vidro é totalmente feita de vidro de segurança, é completamente hermética e impermeável.



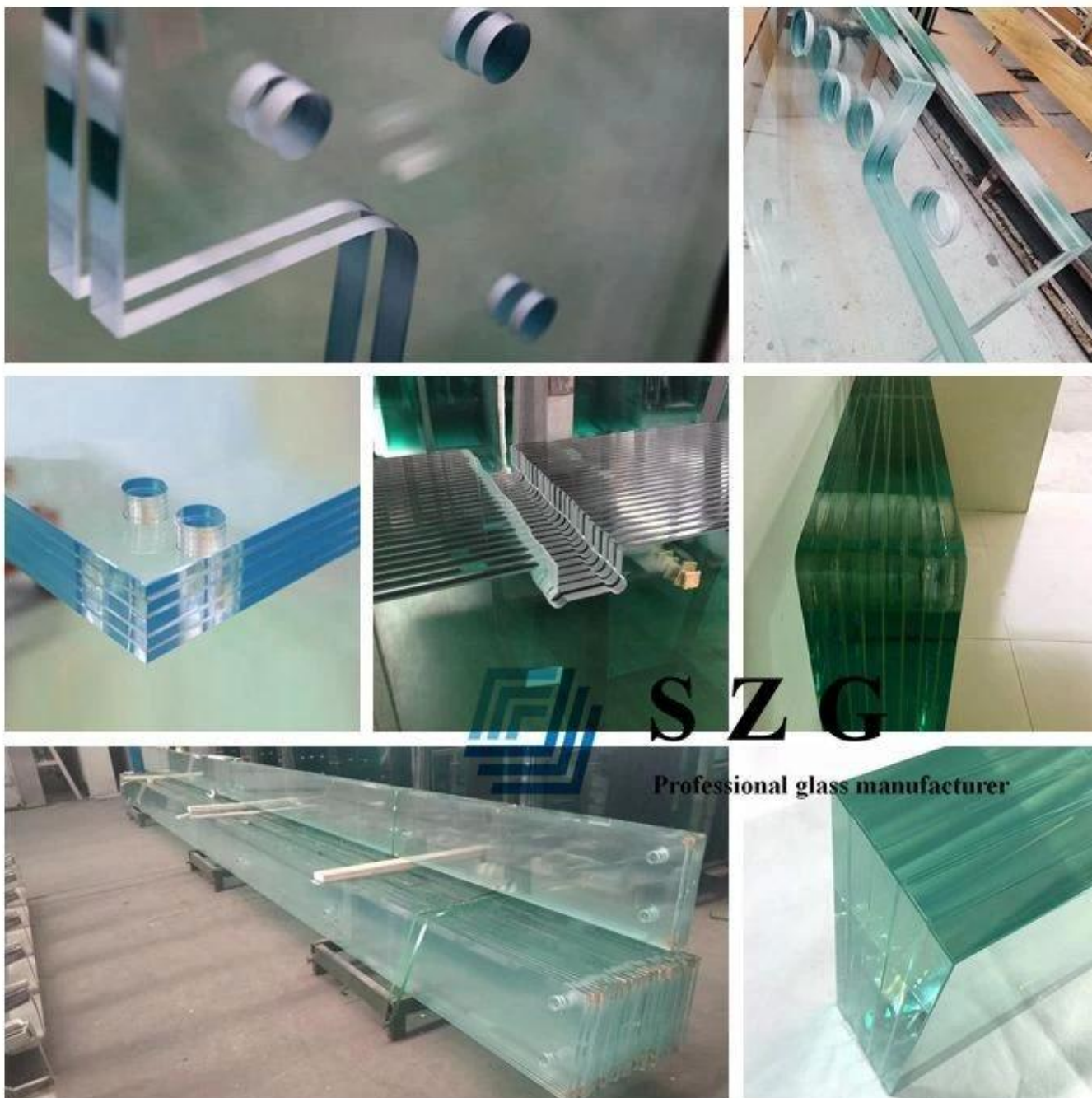
Especificações:

Espessura das aletas de vidro: aletas de vidro de 13,52 mm, aletas de vidro de 17,52 mm, aletas de vidro de 21,52 mm, aletas de vidro de 25,52 mm, aletas de vidro de 31,52 mm, aletas de vidro de 39,52 mm, etc.

Composição do vidro: vidro laminado duplo, vidro laminado triplo, vidro laminado multicamada

Tamanho do vidro: 3,3x12m, tamanho máximo, tamanho personalizado com base no desenho do cliente

Cor do vidro: aletas de vidro azul, aletas de vidro de bronze, aletas de vidro verde, aletas de vidro cinza, aletas de vidro transparente, aletas de vidro com baixo teor de ferro etc.



Controle de qualidade:

As aletas de vidro são uma estrutura muito importante para a fachada, nossas aletas de vidro atendem aos seguintes padrões:

1. As aletas de vidro laminado de 31,52 mm atendem ao padrão de vidro de segurança BS 6206 UK.
2. As aletas de vidro laminado de 31,52 mm atendem ao padrão europeu de vidro de segurança EN 12150 e EN14449 CE.
3. As aletas de vidro laminado de 31,52 mm atendem ao padrão de vidro de segurança SGCC ANZI Z97 USA.
4. As aletas de vidro laminado de 31,52 mm atendem à Certificação compulsória de vidro de segurança chinesa (CCC).
5. As aletas de vidro laminado de 31,52 mm atendem ao padrão de qualidade GB11944 da China.
6. As aletas de vidro laminado de 31,52 mm atendem ao padrão GB9962 e GB15763.2 da China Construction Glass.
7. As aletas de vidro laminado de 31,52 mm atendem ao teste Israel SII.



Verification of Conformity
No. 1870421200000

**Glass in building - Laminated glass and laminated safety glass -
Evaluation of conformity / Product standard
EN 14449:2005**
(This standard is covered by the registered patent 1000000000000)

The product in the certificate, laminated safety glass manufactured by SHENZHEN SUN GLOBAL GLASS CO., LTD. was submitted for the manufacturer's Performance Testing according to the above-mentioned European standard. The results obtained, together with the applicable requirements, the test results and the content of the certificate of conformity, are stated in the main document. This certificate is valid as long as the certificate and glass in the above-mentioned standard are not subject to any change.

Company: Name: SHENZHEN SUN GLOBAL GLASS CO., LTD.
Address: #1 Qiyang Avenue Building, Wuyang Road, Shuangzhen, Shenzhen, Guangdong, China

Manufacturer: Name: SHENZHEN SUN GLOBAL GLASS CO., LTD.
Address: #1 Qiyang Avenue Building, Wuyang Road, Shuangzhen, Shenzhen, Guangdong, China

Product: Laminated Safety Glass
Model: SHENZHEN SUN GLOBAL GLASS CO., LTD.
Material: SHENZHEN SUN GLOBAL GLASS CO., LTD.
Type: SHENZHEN SUN GLOBAL GLASS CO., LTD.

Shenzhen, 27 October 2017


Responsible Manager, TUV Rheinland





**QUALITY MANAGEMENT SYSTEM
CERTIFICATE**

Certificate No.: 1870421200000

We hereby certify that
Shenzhen Sun Global Glass Co., Ltd
located at: #1 Qiyang Avenue Building, Wuyang Road, Shuangzhen, Shenzhen, China

has been awarded this certificate for compliance with the standard
ISO 9001:2015

The Quality Management System Applies to the following area:
Rules of Building Glass (Heat Glass, Tempered Glass, Laminated Glass, Insulated Glass, Mirror Glass and Other Specialty Glass)

Date of Issue: Nov 09, 2016 Date of Validity: Nov 09, 2019

Surveillance Audit (The first time)	Surveillance Audit (The second time)	Surveillance Audit (The third time)

(The quality management system is subject to yearly surveillance audit under the period of validity the certificate is valid only, which must together with an acceptance record of surveillance audit issued by SGS.)

Signed by: 

This certificate and its relevant information can access to the website: www.sgs.com.cn

SHENZHEN SUN GLOBAL GLASS CO., LTD. (CHINA)
Address: #1, Qiyang Avenue Building, Wuyang Road, Shuangzhen, Shenzhen, China

Certificate No.: 1870421200000

EC Declaration of CPD Conformity

The following product has been tested by TüV Rheinland Laboratories Ltd. and the test results and found to be in conformity with the CE Marking Directive of 93/68/EEC. It is possible to use CE marking to demonstrate the conformity with the CPD Directive.

Report No.: 1870421200000

Applicant: SHENZHEN SUN GLOBAL GLASS CO., LTD.
#1 Qiyang Avenue Building, Wuyang Road, Shuangzhen, Shenzhen, Guangdong, China

Manufacturer: SHENZHEN SUN GLOBAL GLASS CO., LTD.
#1 Qiyang Avenue Building, Wuyang Road, Shuangzhen, Shenzhen, Guangdong, China

Product: TEMPERED GLASS

Model No.: Sun, Sun, Sun, Sun, Sun, Sun, Sun

Trade Mark: N/A

Test Standard: EN 12150-2:2004

The relevant test results show that the product complies with the essential requirements in the above-mentioned product. The applicant is authorized to use the certificate in compliance with the CE Declaration of CPD conformity according to the Directive.

The certificate of conformity is based on a single evaluation of the submitted samples of the above-mentioned product. It does not imply an assessment of the whole production and other relevant Directive have to be observed.

© TüV Rheinland Laboratories Ltd. Postfach 1015, Heinsberg, 51624 Heinsberg, Germany
Tel: +49 2181 343-1000 Fax: +49 2181 343-1001

SGS TEST REPORT

No. 1870421200000
Page 1 of 1

Reference No.: 1870421200000
Address: #1 Qiyang Avenue Building, Wuyang Road, Shuangzhen, Shenzhen, China

Product: Laminated Safety Glass
Model: SHENZHEN SUN GLOBAL GLASS CO., LTD.
Material: SHENZHEN SUN GLOBAL GLASS CO., LTD.
Type: SHENZHEN SUN GLOBAL GLASS CO., LTD.


Responsible Manager, SGS



SGS TEST REPORT

No. 1870421200000
Page 1 of 1

Reference No.: 1870421200000
Address: #1 Qiyang Avenue Building, Wuyang Road, Shuangzhen, Shenzhen, China

Product: Laminated Safety Glass
Model: SHENZHEN SUN GLOBAL GLASS CO., LTD.
Material: SHENZHEN SUN GLOBAL GLASS CO., LTD.
Type: SHENZHEN SUN GLOBAL GLASS CO., LTD.


Responsible Manager, SGS



SGS TEST REPORT

No. 1870421200000
Page 1 of 1

Reference No.: 1870421200000
Address: #1 Qiyang Avenue Building, Wuyang Road, Shuangzhen, Shenzhen, China

Product: Laminated Safety Glass
Model: SHENZHEN SUN GLOBAL GLASS CO., LTD.
Material: SHENZHEN SUN GLOBAL GLASS CO., LTD.
Type: SHENZHEN SUN GLOBAL GLASS CO., LTD.




Responsible Manager, SGS



Certificate No.: 1870421200000

EC Declaration of CPD Conformity

The following product has been tested by TüV Rheinland Laboratories Ltd. and the test results and found to be in conformity with the CE Marking Directive of 93/68/EEC. It is possible to use CE marking to demonstrate the conformity with the CPD Directive.

Report No.: 1870421200000

Applicant: SHENZHEN SUN GLOBAL GLASS CO., LTD.
#1 Qiyang Avenue Building, Wuyang Road, Shuangzhen, Shenzhen, Guangdong, China

Manufacturer: SHENZHEN SUN GLOBAL GLASS CO., LTD.
#1 Qiyang Avenue Building, Wuyang Road, Shuangzhen, Shenzhen, Guangdong, China

Product: TEMPERED GLASS

Model No.: Sun, Sun, Sun, Sun, Sun, Sun, Sun

Trade Mark: N/A

Test Standard: EN 12150-2:2004

The relevant test results show that the product complies with the essential requirements in the above-mentioned product. The applicant is authorized to use the certificate in compliance with the CE Declaration of CPD conformity according to the Directive.

© TüV Rheinland Laboratories Ltd. Postfach 1015, Heinsberg, 51624 Heinsberg, Germany
Tel: +49 2181 343-1000 Fax: +49 2181 343-1001

SGS TEST REPORT

No. 1870421200000
Page 1 of 1

Reference No.: 1870421200000
Address: #1 Qiyang Avenue Building, Wuyang Road, Shuangzhen, Shenzhen, China

Product: Laminated Safety Glass
Model: SHENZHEN SUN GLOBAL GLASS CO., LTD.
Material: SHENZHEN SUN GLOBAL GLASS CO., LTD.
Type: SHENZHEN SUN GLOBAL GLASS CO., LTD.


Responsible Manager, SGS



Certificate No.: DP10GP14000

DuPont Glass Laminating Solutions

is pleased to confirm that the company:

SHENZHEN SUN GLOBAL GLASS CO., Ltd

has successfully passed the qualification process of SentryGlastm on May, 2014.

This certificate is valid until the date shown in the below table as long as your manufacturing process for laminated safety glass remains unchanged. Renewal is subject to validation of newly supplied laminates.

Date: 2014-05-29 By DuPont: 

VALIDITY	VALIDITY	VALIDITY	VALIDITY	VALIDITY	VALIDITY	VALIDITY	VALIDITY
2014.5.29	2014.6.8	2014.6.8	2014.6.8	2014.11.11	2014.8.8	2014.11.11	2014.11.11

In authorizing the certificate, DuPont Glass Laminating Solutions does not assume any liability for the responsibility of the signatory company, which is the sole party responsible for the correctness of the product's conformity with applicable laws, regulations, rules and the certificate's expiration date.