

Vidro temperado com baixo teor de ferro de 4 mm para estufa - os melhores fornecedores e fabricantes de vidro com efeito de estufa na China

Existem dois tipos de vidro para estufa, vidro temperado transparente e vidro temperado com baixo teor de ferro. Para obter mais luz solar diretamente, é melhor escolher vidro temperado ultra claro para uso como estufa e deve ser em vidro temperado para evitar que o vidro se quebre. 4mm ultra [vidro temperado claro](#) a transmissão de luz com efeito de estufa pode atingir 89% e o vidro com baixo teor de ferro de 4 mm pode atingir 96%.



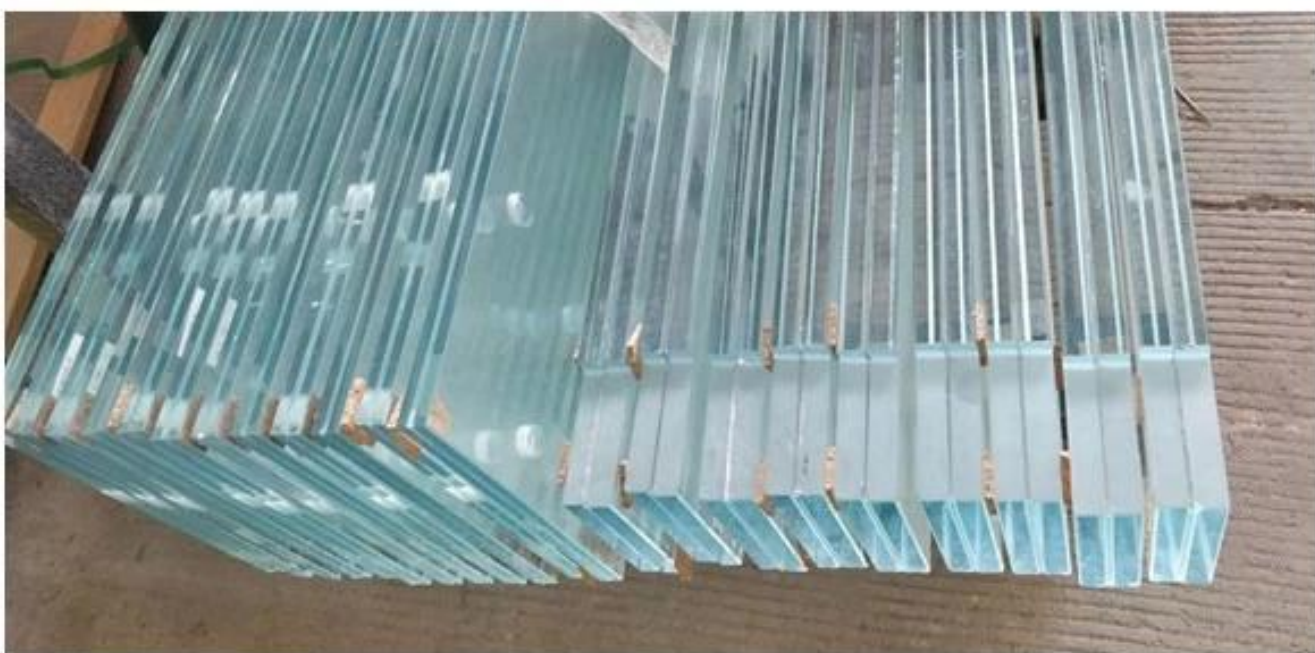
Especificação:

Tipo de vidro: Vidro de segurança temperado ultra claro

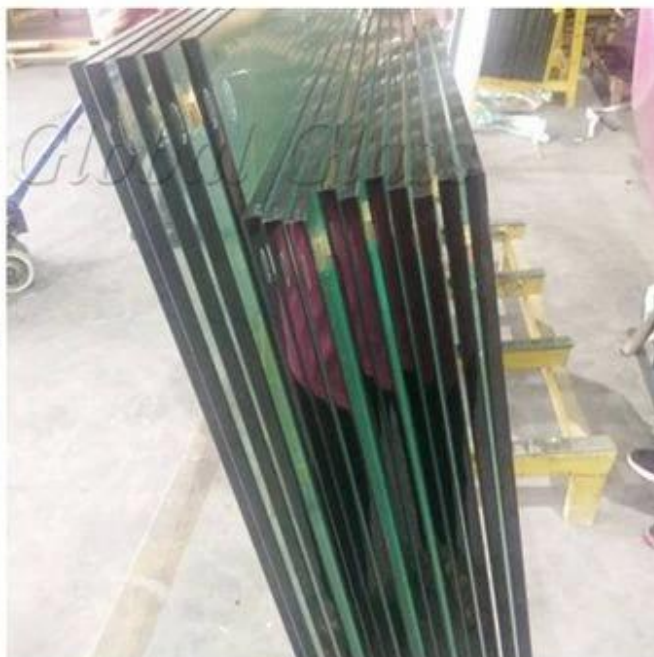
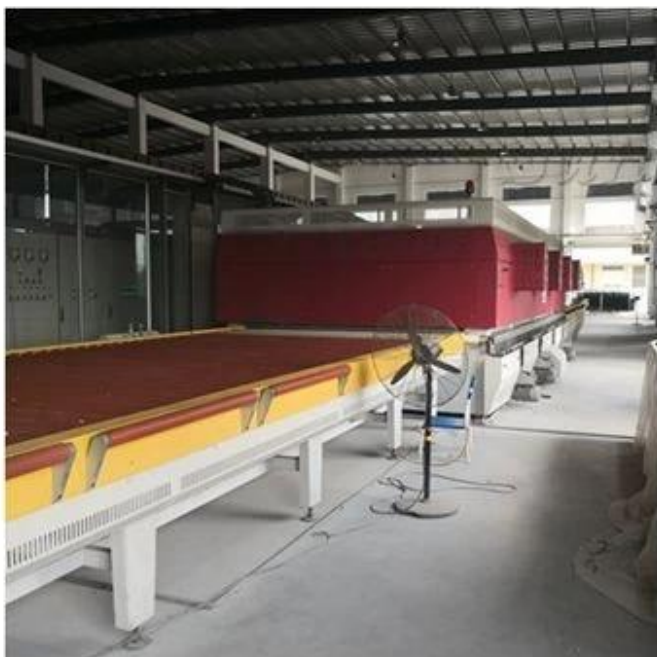
Espessura: 4mm 5mm 6mm 8mm 10mm etc

Tamanho máximo :, tamanhos personalizados com base no desenho

Detalhes do processo: as arestas e outros processos serão exatamente iguais aos dos clientes.



Produção de vidro com efeito de estufa:



Controle de qualidade:

Sun Global Glass fornece vidro de efeito estufa em conformidade com os seguintes padrões:

1. a estufa de vidro temperado ultra claro de 4mm atende ao padrão de vidro de segurança BS 6206 UK.

2. A estufa de vidro temperado com baixo teor de ferro de 4mm atende ao padrão de vidro de segurança europeu EN 12150 CE.

3. A estufa de vidro temperado extra claro de 4mm atende à certificação de vidro de segurança chinesa (CCC).

4. a estufa de vidro temperado extra claro de 4mm encontra o vidro isolado chinês standardGB11944.

5. A estufa de vidro temperado com baixo teor de ferro de 4mm atende ao padrão de vidro de segurança americano da SGCC.



Verification of Conformity
No. 1870420120000

**Glass in building - Laminated glass and laminated safety glass -
Evaluation of conformity / Product standard
EN 14449:2005**
(This standard is covered by the registered patent 1000000000000000)

The product in the certificate, laminated safety glass manufactured by **SHENZHEN SUN GLOBAL GLASS CO., LTD** was submitted for the manufacturer's Performance Testing according to the above-mentioned European standard. The results obtained, consistent with the applicable requirements. The test results and the content of this certificate of conformity are available at the issuing authority. This certificate is valid as long as the certificate holder in the above-mentioned standard is continuously up-to-date.

Company: Name: SHENZHEN SUN GLOBAL GLASS CO., LTD
Address: #1 Qianghua Road, Shuangzhen, Shenzhen, Guangdong
City: China

Manufacturer: Name: SHENZHEN SUN GLOBAL GLASS CO., LTD
Address: #1 Qianghua Road, Shuangzhen, Shenzhen, Guangdong
City: China

Product: Laminated Safety Glass
Model: 6mm+6mm+0.76mm+6mm+6mm+0.76mm+6mm
and 6mm+6mm+0.76mm+6mm+6mm+0.76mm+6mm
and 6mm+6mm+0.76mm+6mm+6mm+0.76mm+6mm
Product: Homologated laminated glass is used to make the product.

Shenzhen (Guangdong) Co., Ltd
No. 111 Lane 111, Shuangzhen Road
Shuangzhen, Shenzhen, Guangdong,
P.R. China

Shenzhen, 27 October 2017


Responsible Manager, TUV Rheinland




**QUALITY MANAGEMENT SYSTEM
CERTIFICATE**

Certificate No.: 18704201200000

We hereby certify that
Shenzhen Sun Global Glass Co., Ltd
located at: **Room 27, Floor 1, Qianghua Road, Shuangzhen, Shenzhen, Guangdong, China**
has been awarded this certificate for compliance with the standard
ISO 9001:2015

The Quality Management System Applies to the following area:
Rules of Building Glass (Heat Glass, Tempered Glass, Laminated Glass, Insulated Glass, Mirror Glass and Other Specialty Glass)

Date of Issue: Nov 09, 2016 Date of Validity: 31/10/2019

Surveillance Audit (The first time)	Surveillance Audit (The second time)	Surveillance Audit (The third time)

(The quality management system is subject to yearly surveillance audit under the period of validity the certificate is valid only, which must together with an acceptance record of surveillance audit issued by SGS.)

Signed by: 

This certificate and its relevant information can access to the website: www.sgs.com.cn

SHENZHEN SUN GLOBAL GLASS CO., LTD
Address: #1, Qianghua Road, Shuangzhen, Shenzhen, Guangdong, China

Certificate No.: 1870420120000

EC Declaration of CPD Conformity

The following product has been tested by TüV Rheinland Laboratories Ltd. and the test results and found to be in conformity with the CE Marking Directive of 93/68/EEC. It is possible to use CE marking to demonstrate the conformity with the CPD Directive.

Report No.: 1870420120000

Applicant: SHENZHEN SUN GLOBAL GLASS CO., LTD
NO. 111 LANE 111, SHUANGZHEN ROAD, SHUANGZHEN, SHENZHEN, GUANGDONG, CHINA

Manufacturer: SHENZHEN SUN GLOBAL GLASS CO., LTD
NO. 111 LANE 111, SHUANGZHEN ROAD, SHUANGZHEN, SHENZHEN, GUANGDONG, CHINA

Product: TEMPERED GLASS

Model No.: Sun, Sun, Sun, Sun, Sun, Sun, Sun

Trade Mark: N/A

Test Standard: EN 12150-2:2004

The relevant test results show that the product complies with the essential requirements in the above-mentioned standard. The applicant is authorized to use the certificate in connection with the CE Declaration of CPD conformity according to the Directive.

The certificate of conformity is based on a single evaluation of the submitted samples of the above-mentioned product. It does not imply an assessment of the whole production and other relevant Directive have to be observed.

© TüV Rheinland Laboratories Ltd. Postfach 101559, D-51059 Köln, Germany
Tel. +49 221 345-2000 Fax. +49 221 345-2001

SGS TEST REPORT

No. 1870420120000
Page 1 of 1

Reference No. 1870420120000
Address: #1 Qianghua Road, Shuangzhen, Shenzhen, Guangdong, China

The following product has been tested by SGS and the test results and found to be in conformity with the CE Marking Directive of 93/68/EEC. It is possible to use CE marking to demonstrate the conformity with the CPD Directive.

Report No.: 1870420120000

Applicant: SHENZHEN SUN GLOBAL GLASS CO., LTD
NO. 111 LANE 111, SHUANGZHEN ROAD, SHUANGZHEN, SHENZHEN, GUANGDONG, CHINA

Manufacturer: SHENZHEN SUN GLOBAL GLASS CO., LTD
NO. 111 LANE 111, SHUANGZHEN ROAD, SHUANGZHEN, SHENZHEN, GUANGDONG, CHINA

Product: TEMPERED GLASS

Model No.: Sun, Sun, Sun, Sun, Sun, Sun, Sun

Trade Mark: N/A

Test Standard: EN 12150-2:2004

The relevant test results show that the product complies with the essential requirements in the above-mentioned standard. The applicant is authorized to use the certificate in connection with the CE Declaration of CPD conformity according to the Directive.





SGS TEST REPORT

No. 1870420120000
Page 1 of 1

Reference No. 1870420120000
Address: #1 Qianghua Road, Shuangzhen, Shenzhen, Guangdong, China

The following product has been tested by SGS and the test results and found to be in conformity with the CE Marking Directive of 93/68/EEC. It is possible to use CE marking to demonstrate the conformity with the CPD Directive.

Report No.: 1870420120000

Applicant: SHENZHEN SUN GLOBAL GLASS CO., LTD
NO. 111 LANE 111, SHUANGZHEN ROAD, SHUANGZHEN, SHENZHEN, GUANGDONG, CHINA

Manufacturer: SHENZHEN SUN GLOBAL GLASS CO., LTD
NO. 111 LANE 111, SHUANGZHEN ROAD, SHUANGZHEN, SHENZHEN, GUANGDONG, CHINA

Product: TEMPERED GLASS

Model No.: Sun, Sun, Sun, Sun, Sun, Sun, Sun

Trade Mark: N/A

Test Standard: EN 12150-2:2004

The relevant test results show that the product complies with the essential requirements in the above-mentioned standard. The applicant is authorized to use the certificate in connection with the CE Declaration of CPD conformity according to the Directive.





SGS TEST REPORT

No. 1870420120000
Page 1 of 1

Reference No. 1870420120000
Address: #1 Qianghua Road, Shuangzhen, Shenzhen, Guangdong, China

The following product has been tested by SGS and the test results and found to be in conformity with the CE Marking Directive of 93/68/EEC. It is possible to use CE marking to demonstrate the conformity with the CPD Directive.

Report No.: 1870420120000

Applicant: SHENZHEN SUN GLOBAL GLASS CO., LTD
NO. 111 LANE 111, SHUANGZHEN ROAD, SHUANGZHEN, SHENZHEN, GUANGDONG, CHINA

Manufacturer: SHENZHEN SUN GLOBAL GLASS CO., LTD
NO. 111 LANE 111, SHUANGZHEN ROAD, SHUANGZHEN, SHENZHEN, GUANGDONG, CHINA

Product: TEMPERED GLASS

Model No.: Sun, Sun, Sun, Sun, Sun, Sun, Sun

Trade Mark: N/A

Test Standard: EN 12150-2:2004

The relevant test results show that the product complies with the essential requirements in the above-mentioned standard. The applicant is authorized to use the certificate in connection with the CE Declaration of CPD conformity according to the Directive.





DECLARATION OF CONFORMITY

Certificate No.: 1870420120000

EC Declaration of CPD Conformity

The following product has been tested by TüV Rheinland Laboratories Ltd. and the test results and found to be in conformity with the CE Marking Directive of 93/68/EEC. It is possible to use CE marking to demonstrate the conformity with the CPD Directive.

Report No.: 1870420120000

Applicant: SHENZHEN SUN GLOBAL GLASS CO., LTD
NO. 111 LANE 111, SHUANGZHEN ROAD, SHUANGZHEN, SHENZHEN, GUANGDONG, CHINA

Manufacturer: SHENZHEN SUN GLOBAL GLASS CO., LTD
NO. 111 LANE 111, SHUANGZHEN ROAD, SHUANGZHEN, SHENZHEN, GUANGDONG, CHINA

Product: TEMPERED GLASS

Model No.: Sun, Sun, Sun, Sun, Sun, Sun, Sun

Trade Mark: N/A

Test Standard: EN 12150-2:2004

The relevant test results show that the product complies with the essential requirements in the above-mentioned standard. The applicant is authorized to use the certificate in connection with the CE Declaration of CPD conformity according to the Directive.



The certificate of conformity is based on a single evaluation of the submitted samples of the above-mentioned product. It does not imply an assessment of the whole production and other relevant Directive have to be observed.

© TüV Rheinland Laboratories Ltd. Postfach 101559, D-51059 Köln, Germany
Tel. +49 221 345-2000 Fax. +49 221 345-2001

SGS TEST REPORT

No. 1870420120000
Page 1 of 1

Reference No. 1870420120000
Address: #1 Qianghua Road, Shuangzhen, Shenzhen, Guangdong, China

The following product has been tested by SGS and the test results and found to be in conformity with the CE Marking Directive of 93/68/EEC. It is possible to use CE marking to demonstrate the conformity with the CPD Directive.

Report No.: 1870420120000

Applicant: SHENZHEN SUN GLOBAL GLASS CO., LTD
NO. 111 LANE 111, SHUANGZHEN ROAD, SHUANGZHEN, SHENZHEN, GUANGDONG, CHINA

Manufacturer: SHENZHEN SUN GLOBAL GLASS CO., LTD
NO. 111 LANE 111, SHUANGZHEN ROAD, SHUANGZHEN, SHENZHEN, GUANGDONG, CHINA

Product: TEMPERED GLASS

Model No.: Sun, Sun, Sun, Sun, Sun, Sun, Sun

Trade Mark: N/A

Test Standard: EN 12150-2:2004

The relevant test results show that the product complies with the essential requirements in the above-mentioned standard. The applicant is authorized to use the certificate in connection with the CE Declaration of CPD conformity according to the Directive.





Certificate No.: DP10GP14000

SentryGlas

DuPont Glass Laminating Solutions

is pleased to confirm that the company:

SHENZHEN SUN GLOBAL GLASS CO., Ltd

has successfully passed the qualification process of SentryGlas® on May, 2014.

This certificate is valid until the date shown in the below table as long as your manufacturing process for laminated safety glass remains unchanged. Renewal is subject to validation of newly supplied laminates.

Date: 2014-05-29 By DuPont: 

VALIDITY	VALIDITY	VALIDITY	VALIDITY	VALIDITY	VALIDITY	VALIDITY	VALIDITY
2014.5.29	2014.6.8	2014.6.8	2014.6.8	2014.11.11	2014.8.8	2014.11.11	2014.11.11

In authorizing the certificate, DuPont Glass Laminating Co., Ltd. does not assume any liability for the responsibility of the registering authority, which is the sole party responsible for the correctness of the product's conformity with applicable laws, regulations, rules and/or standards' governing conformity.