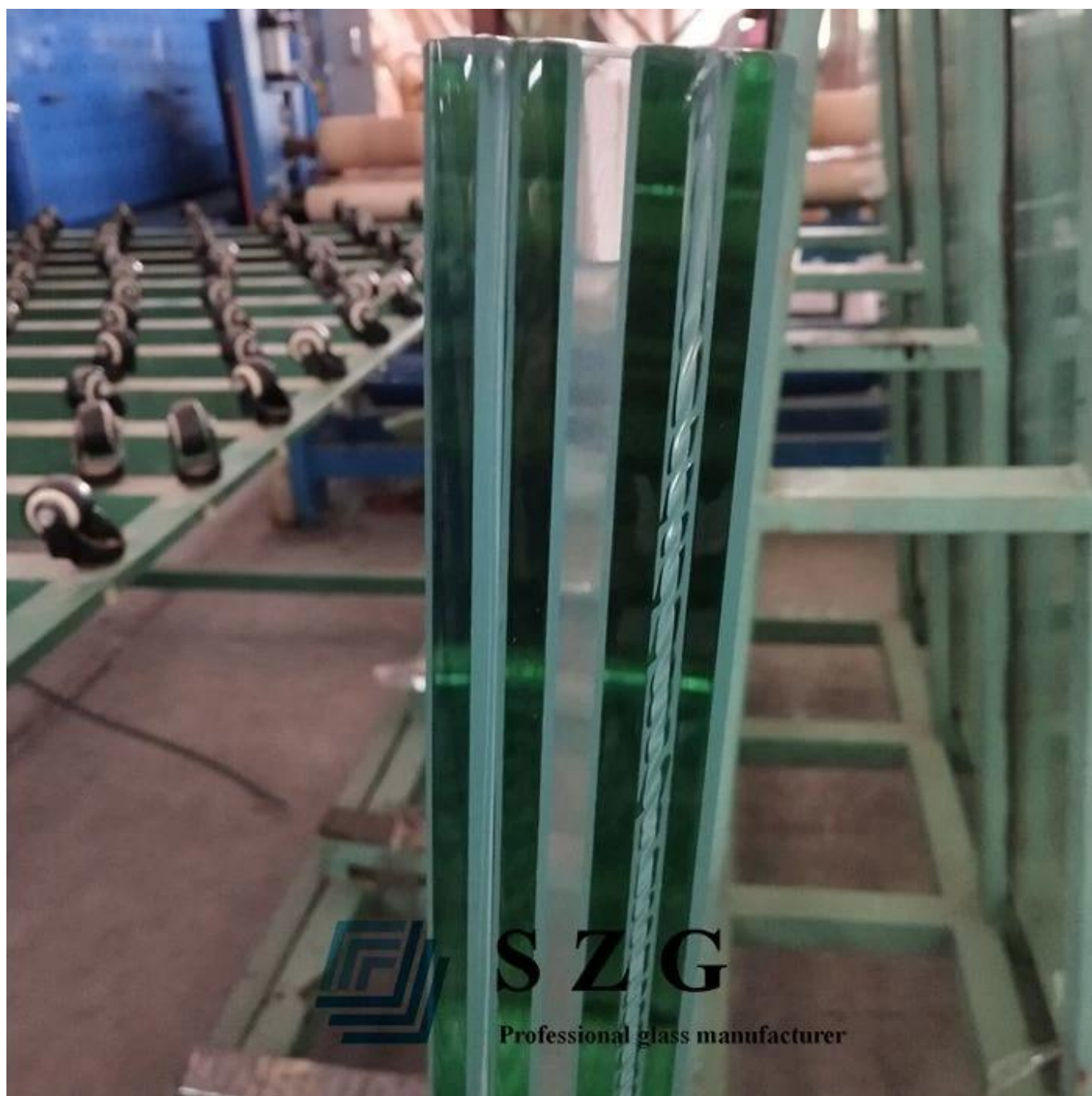


SZG 10 мм + 1,52 мм пленка SGP + 10 мм закаленное многослойное стекло - лучший бренд многослойного стекла SGP в Китае

По сравнению с PVB и EVA, многослойное стекло SGP отличается высочайшей прочностью и связностью, что позволяет легко адаптироваться к последним и самым строгим требованиям современного строительного рынка.

21,52 мм SGP ураган многослойное стекло состоит из двух слоев **10 мм закаленное стекло** и с межслойной пленкой SGP. Он широко используется в области необходимости учитывать безопасность человека.

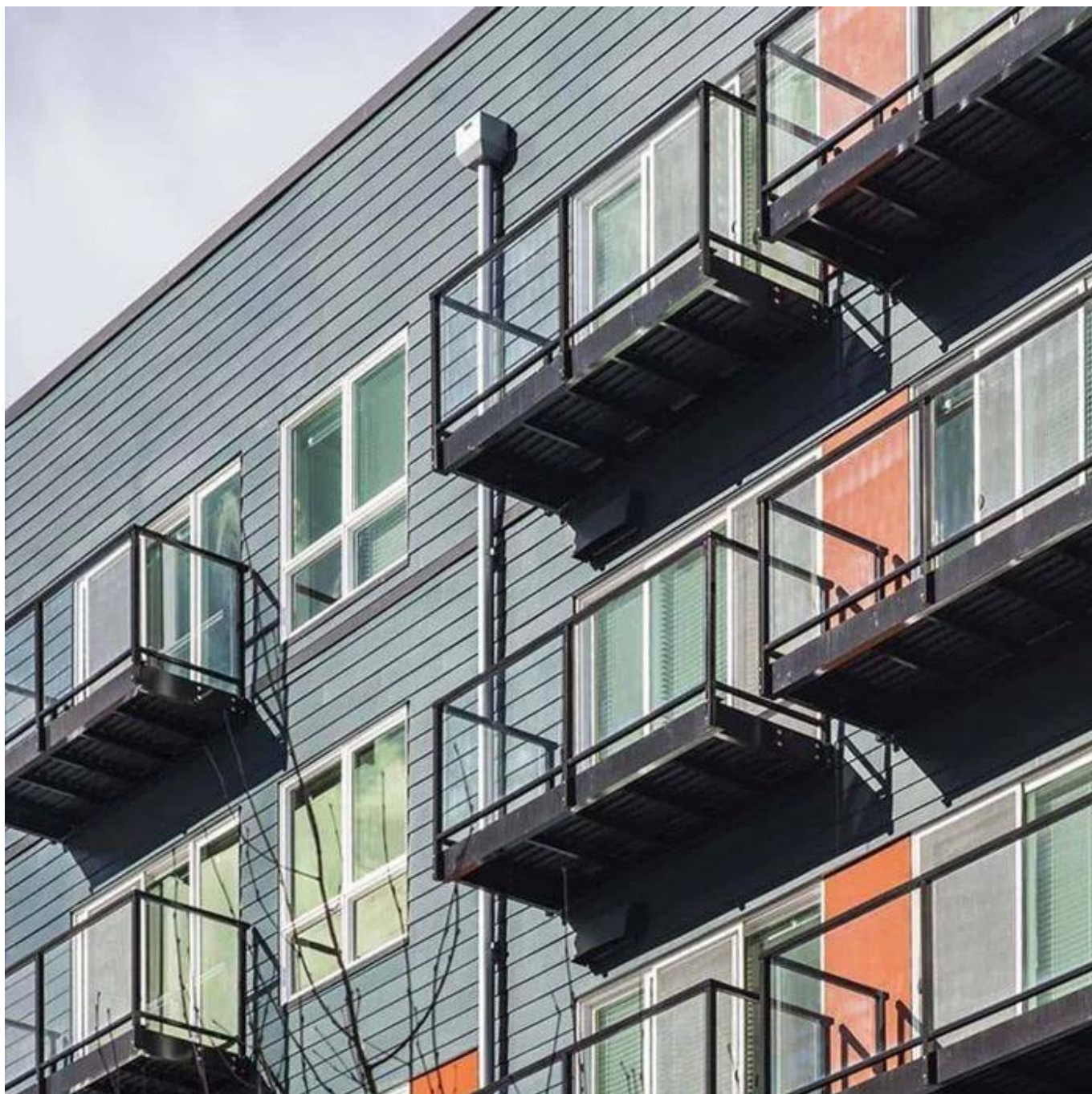






S Z G

Professional glass manufacturer



Спецификация:

Бренд SGP: DuPont или Saflex SOLUTIA по запросу клиентов

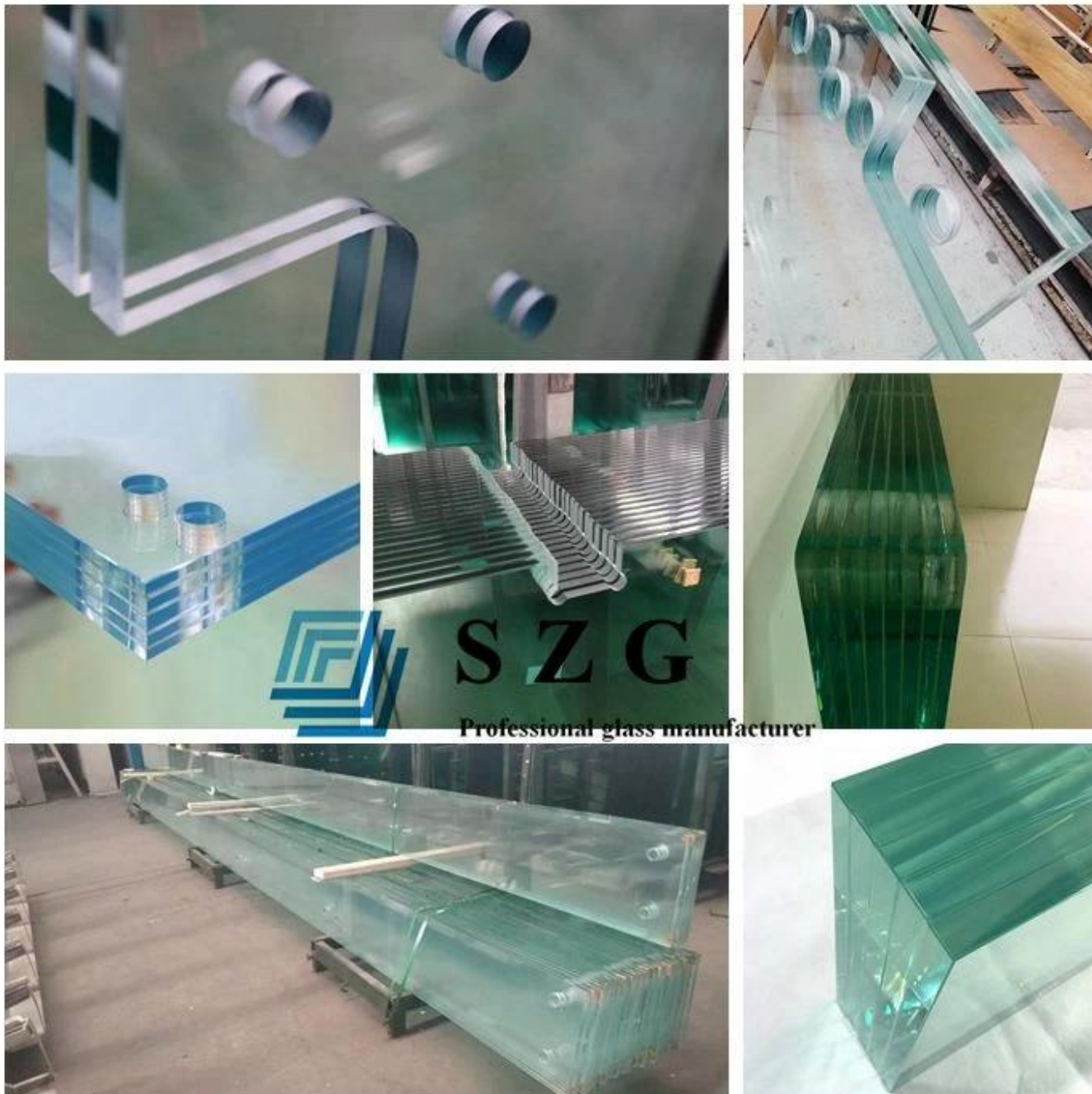
Максимальный размер SGP: 6000 мм (длина) * 2500 мм (ширина), может быть изготовлен по заказу клиента

Толщина часовой пленки SGP: 0,89 мм / 1,52 мм / 2,28 мм

Варианты стеклянных подложек: ультрапрозрачное стекло, прозрачное стекло, тонированное стекло, отражающее стекло, стекло шелкография, стекло Low-E , матовое стекло и т. Д.

Толщина многослойного стекла SGP: 11,52 мм многослойного стекла SGP, 13,52 мм многослойного стекла SGP, 17,52 мм многослойного стекла SGP, 25,52 мм многослойного стекла SGP и т. Д.

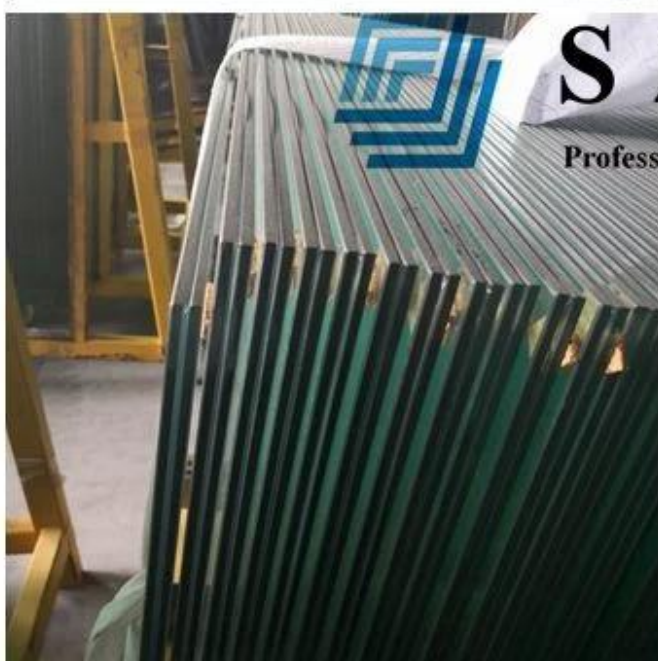
Форма стекла: Доступны как плоское многослойное стекло, так и изогнутое многослойное стекло, которые будут настраиваться на основе чертежей клиентов.



Особенности:

1. Твердость стекла sgr в 100 раз выше, чем у ламинированного стекла PVB, а прочность на разрыв у ламинированного стекла sgr в 5 раз выше, чем у ламинированного стекла PVB.

2. Многослойное стекло SGP обладает устойчивостью к ураганам и может выдерживать большие штормы благодаря высокой клейкости.
3. Многослойное стекло SGP можно использовать в качестве пуленепробиваемого стекла и может улучшить характеристики пуленепробиваемого стекла.
4. после нескольких лет выдержки многослойное стекло sgp чрезвычайно прочное и устойчивое, благодаря чему стекло остается безупречным и прозрачным.
5. Ламинированное пленочное стекло sgp подходит для бескаркасной конструкции на открытом воздухе, например, для перил балкона и т. Д., Оно не впитывает воду в воздух.
6. Превосходные показатели безопасности после поломки.



SGP ламинированные технические данные

Material Performance	SGP	PVB
Tensile Strength MPA	34.5	28.1
Tear Strength MJ/m ³	50	10-15
Fracture Expansion Rate	400%	275%
Haze Degree	<<2%	<2%
Yellow Index	<1.5	6-12
Index of Refraction	1.5	1.47~1.5
Transmittance 6mm Clear+1.52mm+6mm Clear	Professional glass manufacturer 89%	89%
UV Resistance Rate 3mm Clear+0.38mm+6mm Clear	99.9%	99.9%
Ignition Point	470°C	410°C
Flame Spread Index	30	60
Combustion Smoke Index	215	350

SGP Применение:

Так как многослойное стекло SGP имеет отличные характеристики, оно широко используется в различных отраслях промышленности. Благодаря безопасности, красоте и уникальному сочетанию дальнейшего спроса многослойное стекло SGP широко применяется в строительстве, см. Ниже:

1. Стеклопанель, стеклянный мост, стеклянный пол и т. Д.
2. Дизайн под открытым небом, например, ограждение балкона, ограждение бассейна.
3. Стеклопанель, стеклянные несущие стены и т. Д.
4. Стеклопанель, стеклянное окно, стеклянный купол и т. Д.



Сертификаты качества:

Производство многослойного стекла SZG Sgr строго соответствует системе качества ISO9001. Он проходит внутренние и международные стандарты качества, см. Ниже:

1. Балконные перила из ламинированного стекла размером 21,52 мм SGP соответствуют китайскому стандарту качества CCC Certificate.
2. Балконные перила из ламинированного стекла размером 21,52 мм SGP соответствуют европейскому стандарту EN14449, E12510 и американскому рыночному стандарту SGCC ANSI Z97.

3. Балконные перила из ламинированного стекла 21,52 мм SGP соответствуют британскому стандарту BS6206.

4. Балконные перила из ламинированного стекла размером 21,52 мм SGP соответствуют стандарту Китайского строительного стекла GB9962 и GB15763.2.

5. Балконные перила из ламинированного стекла размером 21,52 мм SGP соответствуют стандарту Israel SII.



Verification of Conformity
No. 1870421200000

**Glass in building - Laminated glass and laminated safety glass -
Evaluation of conformity / Product standard
EN 14449:2005**
(This standard is covered by the registered patent 1000000000000)

The product in the certificate, laminated safety glass, manufactured by **SHENZHEN SUN GLOBAL GLASS CO., LTD** was submitted for the manufacturer's Performance Testing according to the above-mentioned European standard. The results obtained, according to the applicable standards, are in full conformity with the requirements of the standard. The certificate is valid until the date of expiry of the certificate.

Client: SHENZHEN SUN GLOBAL GLASS CO., LTD
Address: #1 Qianghua Building, Shuangyuan Road, Shenzhen, Guangdong, China

Manufacturer: SHENZHEN SUN GLOBAL GLASS CO., LTD
Address: #1 Qianghua Building, Shuangyuan Road, Shenzhen, Guangdong, China

Product: Laminated Safety Glass
Model: SHENZHEN SUN GLOBAL GLASS CO., LTD
Standard: EN 14449:2005

Test Standard: EN 12150-2:2004

Shenzhen, 27 October 2017


Responsible Manager




**QUALITY MANAGEMENT SYSTEM
CERTIFICATE**

Certificate No. 1870421200000

We hereby certify that
Shenzhen Sun Global Glass Co., Ltd
located at: **Room 27, Floor 1, Qianghua Building, Shuangyuan Road, Shenzhen, Guangdong, China**
has been awarded this certificate for compliance with the standard
ISO 9001:2015

The Quality Management System Applies to the following area:
Production of Building Glass (Heat Glass, Tempered Glass, Laminated Glass, Insulated Glass, Mirror Glass and other Building Glass)

Date of Issue: Nov 09, 2016 Date of Validity: Nov 09, 2019

Surveillance Audit (The first time)	Surveillance Audit (The second time)	Surveillance Audit (The third time)

(The quality management system is subject to yearly surveillance audit under the period of validity the certificate is valid only, which must together with an acceptance audit of surveillance audit issued by SGS.)

Signed by: 

This certificate and its relevant information can access to the website: www.sgs.com.cn

SHENZHEN SUN GLOBAL GLASS CO., LTD
Address: #1, Qianghua Building, Shuangyuan Road, Shenzhen, Guangdong, China

Certificate No. 1870421200000

EC Declaration of CPD Conformity

The following product has been tested by LUTBER Technology Laboratories Ltd. with the following elements and found to be in conformity with the CE Conformity Directive of 90/269/EEC. It is possible to use CE marking to demonstrate the conformity with the CPD Directive.

Report No.: 1870421200000

Applicant: SHENZHEN SUN GLOBAL GLASS CO., LTD
Address: #1 Qianghua Building, Shuangyuan Road, Shenzhen, Guangdong, China

Manufacturer: SHENZHEN SUN GLOBAL GLASS CO., LTD
Address: #1 Qianghua Building, Shuangyuan Road, Shenzhen, Guangdong, China

Product: TEMPERED GLASS

Model No.: Sun, Sun, Sun, Sun, Sun, Sun, Sun

Trade Mark: N/A

Test Standard: EN 12150-2:2004

The relevant test results show that the product complies with the essential requirements in the above-mentioned standard. The applicant is authorized to use the certificate in compliance with the CE Declaration of CPD conformity according to the Directive.

The certificate of conformity is based on a single evaluation of the submitted samples of the above-mentioned product. It does not imply an assessment of the whole production and other elements (Directive has to be observed).

LUTBER Technology Laboratories Ltd. Test Facility, Phoenix, UK
No. 10, Phoenix Road, Phoenix, UK

SGS TEST REPORT

No. 1870421200000
Page 1 of 1

Reference: SHENZHEN SUN GLOBAL GLASS CO., LTD
Address: #1 Qianghua Building, Shuangyuan Road, Shenzhen, Guangdong, China

The following product has been tested by SGS with the following elements and found to be in conformity with the CE Conformity Directive of 90/269/EEC. It is possible to use CE marking to demonstrate the conformity with the CPD Directive.

Report No.: 1870421200000

Applicant: SHENZHEN SUN GLOBAL GLASS CO., LTD
Address: #1 Qianghua Building, Shuangyuan Road, Shenzhen, Guangdong, China

Manufacturer: SHENZHEN SUN GLOBAL GLASS CO., LTD
Address: #1 Qianghua Building, Shuangyuan Road, Shenzhen, Guangdong, China

Product: TEMPERED GLASS

Model No.: Sun, Sun, Sun, Sun, Sun, Sun, Sun

Trade Mark: N/A

Test Standard: EN 12150-2:2004

The relevant test results show that the product complies with the essential requirements in the above-mentioned standard. The applicant is authorized to use the certificate in compliance with the CE Declaration of CPD conformity according to the Directive.



SGS TEST REPORT

No. 1870421200000
Page 1 of 1

Reference: SHENZHEN SUN GLOBAL GLASS CO., LTD
Address: #1 Qianghua Building, Shuangyuan Road, Shenzhen, Guangdong, China

The following product has been tested by SGS with the following elements and found to be in conformity with the CE Conformity Directive of 90/269/EEC. It is possible to use CE marking to demonstrate the conformity with the CPD Directive.

Report No.: 1870421200000

Applicant: SHENZHEN SUN GLOBAL GLASS CO., LTD
Address: #1 Qianghua Building, Shuangyuan Road, Shenzhen, Guangdong, China

Manufacturer: SHENZHEN SUN GLOBAL GLASS CO., LTD
Address: #1 Qianghua Building, Shuangyuan Road, Shenzhen, Guangdong, China

Product: TEMPERED GLASS

Model No.: Sun, Sun, Sun, Sun, Sun, Sun, Sun

Trade Mark: N/A

Test Standard: EN 12150-2:2004

The relevant test results show that the product complies with the essential requirements in the above-mentioned standard. The applicant is authorized to use the certificate in compliance with the CE Declaration of CPD conformity according to the Directive.



SGS TEST REPORT

No. 1870421200000
Page 1 of 1

Reference: SHENZHEN SUN GLOBAL GLASS CO., LTD
Address: #1 Qianghua Building, Shuangyuan Road, Shenzhen, Guangdong, China

The following product has been tested by SGS with the following elements and found to be in conformity with the CE Conformity Directive of 90/269/EEC. It is possible to use CE marking to demonstrate the conformity with the CPD Directive.

Report No.: 1870421200000

Applicant: SHENZHEN SUN GLOBAL GLASS CO., LTD
Address: #1 Qianghua Building, Shuangyuan Road, Shenzhen, Guangdong, China

Manufacturer: SHENZHEN SUN GLOBAL GLASS CO., LTD
Address: #1 Qianghua Building, Shuangyuan Road, Shenzhen, Guangdong, China

Product: TEMPERED GLASS

Model No.: Sun, Sun, Sun, Sun, Sun, Sun, Sun

Trade Mark: N/A

Test Standard: EN 12150-2:2004

The relevant test results show that the product complies with the essential requirements in the above-mentioned standard. The applicant is authorized to use the certificate in compliance with the CE Declaration of CPD conformity according to the Directive.



Certificate No. 1870421200000

EC Declaration of CPD Conformity

The following product has been tested by LUTBER Technology Laboratories Ltd. with the following elements and found to be in conformity with the CE Conformity Directive of 90/269/EEC. It is possible to use CE marking to demonstrate the conformity with the CPD Directive.

Report No.: 1870421200000

Applicant: SHENZHEN SUN GLOBAL GLASS CO., LTD
Address: #1 Qianghua Building, Shuangyuan Road, Shenzhen, Guangdong, China

Manufacturer: SHENZHEN SUN GLOBAL GLASS CO., LTD
Address: #1 Qianghua Building, Shuangyuan Road, Shenzhen, Guangdong, China

Product: TEMPERED GLASS

Model No.: Sun, Sun, Sun, Sun, Sun, Sun, Sun

Trade Mark: N/A

Test Standard: EN 12150-2:2004

The relevant test results show that the product complies with the essential requirements in the above-mentioned standard. The applicant is authorized to use the certificate in compliance with the CE Declaration of CPD conformity according to the Directive.

The certificate of conformity is based on a single evaluation of the submitted samples of the above-mentioned product. It does not imply an assessment of the whole production and other elements (Directive has to be observed).

LUTBER Technology Laboratories Ltd. Test Facility, Phoenix, UK
No. 10, Phoenix Road, Phoenix, UK

SGS TEST REPORT

No. 1870421200000
Page 1 of 1

Reference: SHENZHEN SUN GLOBAL GLASS CO., LTD
Address: #1 Qianghua Building, Shuangyuan Road, Shenzhen, Guangdong, China

The following product has been tested by SGS with the following elements and found to be in conformity with the CE Conformity Directive of 90/269/EEC. It is possible to use CE marking to demonstrate the conformity with the CPD Directive.

Report No.: 1870421200000

Applicant: SHENZHEN SUN GLOBAL GLASS CO., LTD
Address: #1 Qianghua Building, Shuangyuan Road, Shenzhen, Guangdong, China

Manufacturer: SHENZHEN SUN GLOBAL GLASS CO., LTD
Address: #1 Qianghua Building, Shuangyuan Road, Shenzhen, Guangdong, China

Product: TEMPERED GLASS

Model No.: Sun, Sun, Sun, Sun, Sun, Sun, Sun

Trade Mark: N/A

Test Standard: EN 12150-2:2004

The relevant test results show that the product complies with the essential requirements in the above-mentioned standard. The applicant is authorized to use the certificate in compliance with the CE Declaration of CPD conformity according to the Directive.



Certificate No. DP10GP14000

DuPont Glass Laminating Solutions

in pleased to confirm that the company:

SHENZHEN SUN GLOBAL GLASS CO., Ltd

has successfully passed the qualification process of SentryGlastm on May, 2014.

This certificate is valid until the date shown in the below table as long as your manufacturing process for laminated safety glass remains unchanged. Renewal is subject to validation of newly supplied laminates.

Date: 2014-05-29 By DuPont: 

VALIDITY	VALIDITY	VALIDITY	VALIDITY	VALIDITY	VALIDITY	VALIDITY	VALIDITY
2014.5.29	2014.5.29	2014.5.29	2014.5.29	2014.5.29	2014.5.29	2014.5.29	2014.5.29

In authorizing the certificate, DuPont Technology Laboratories Ltd. does not assume any liability for the responsibility of the signatory company, which is the sole party responsible for the correctness of the product's conformity with applicable laws, regulations, rules and/or standards' governing conformity.